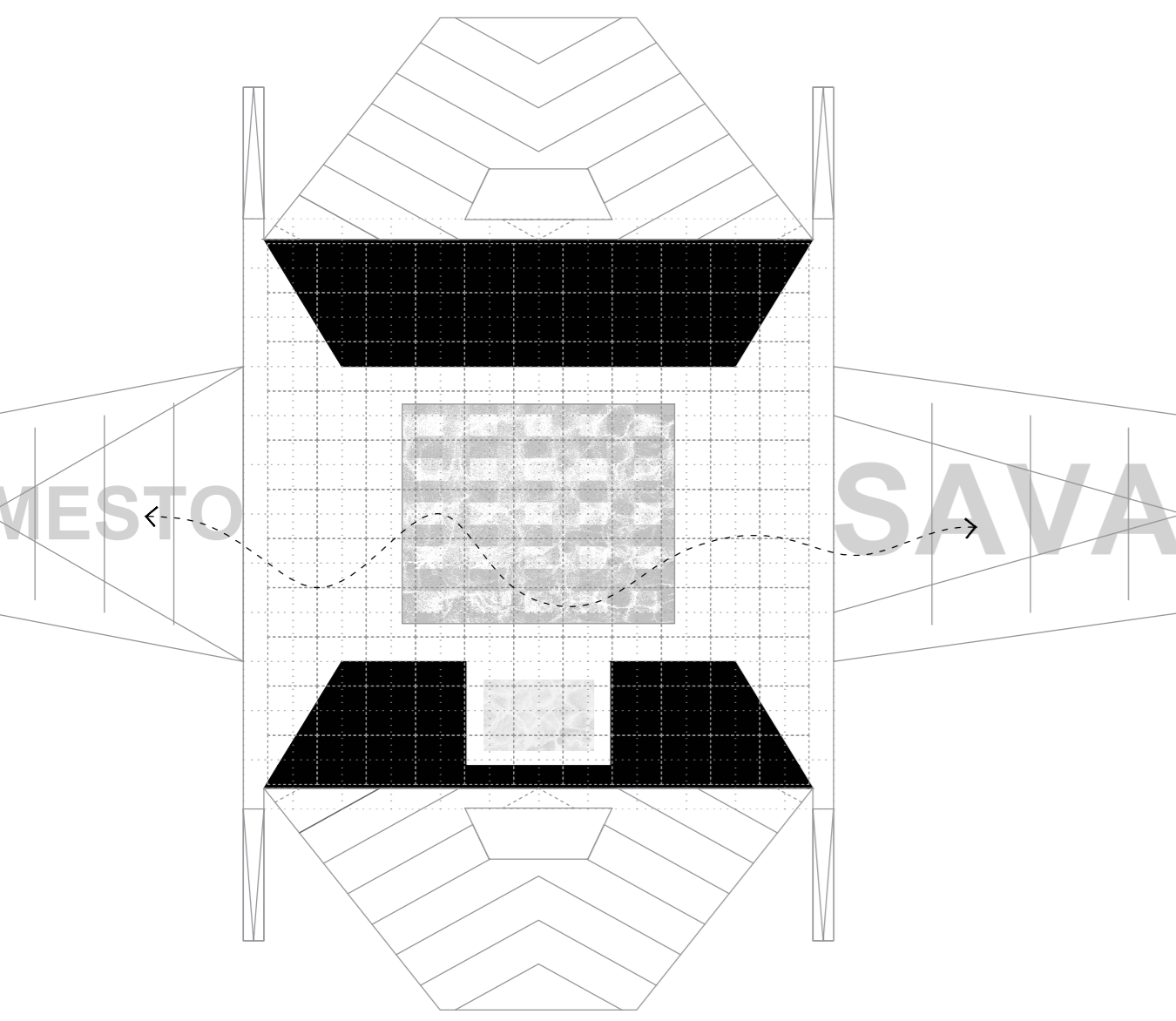
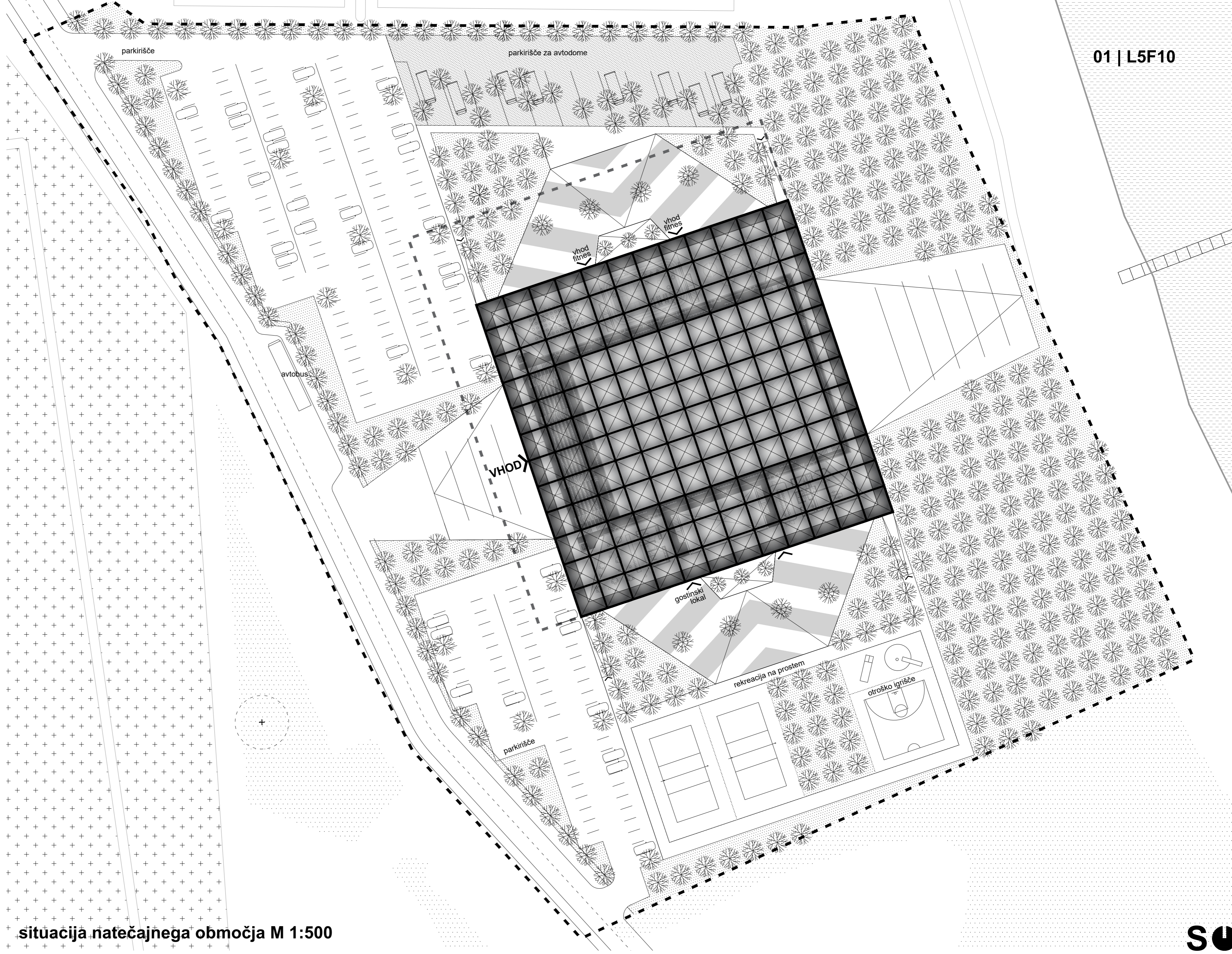
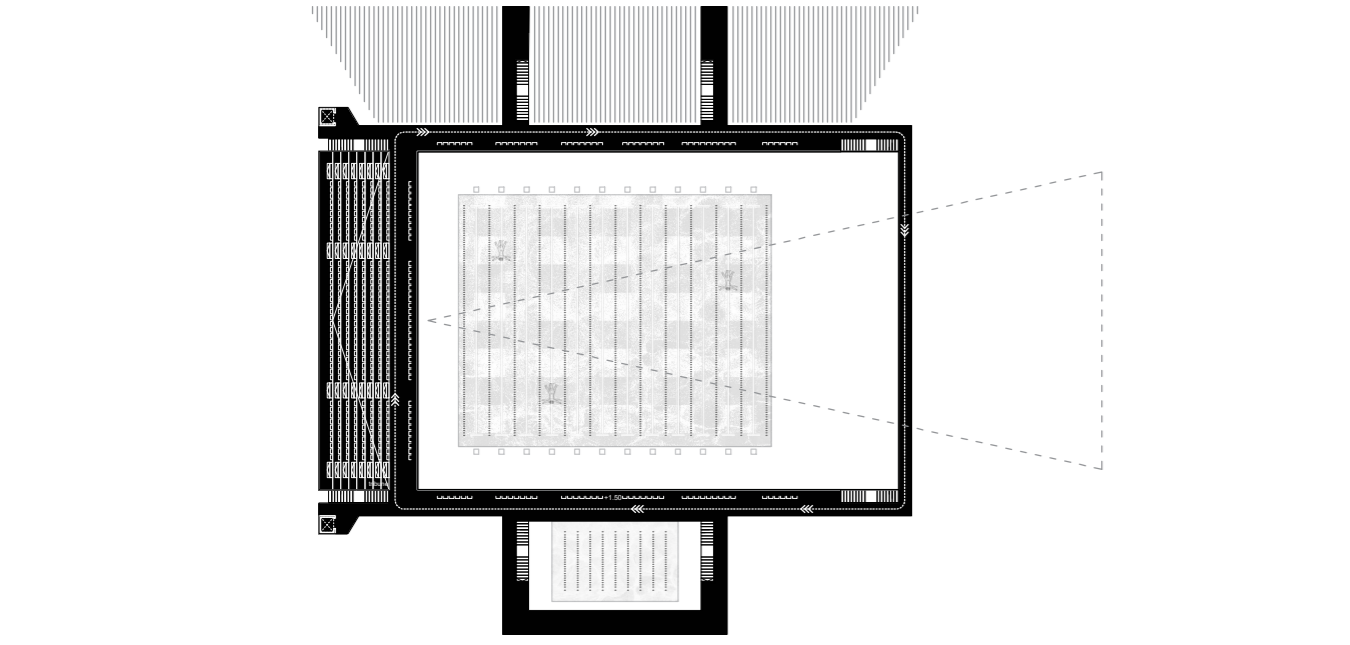


**Urbanizem**  
 Bazen je postavljen v odnosu na reku Savu kot prevladujoč prostorski avtoriteti in vzpostavlja nov sistem parcelnih smeri. Lokacija na sred območja omogoča razdelitev na 3 cone zunanjih območij: zahodnu tampon conu, glede na načrtovano cesto, pokopališče in zahtevanim parkiriščem, osrednjo conu s kampom na severu, športnim igrišči na jugu in vzhodni del ki pripada zavarovani krajini in naravi.

**pritličje**  
 povezava mesta in reke



**nadstropje**  
 povezovanje športno-rekreacijskih objektov



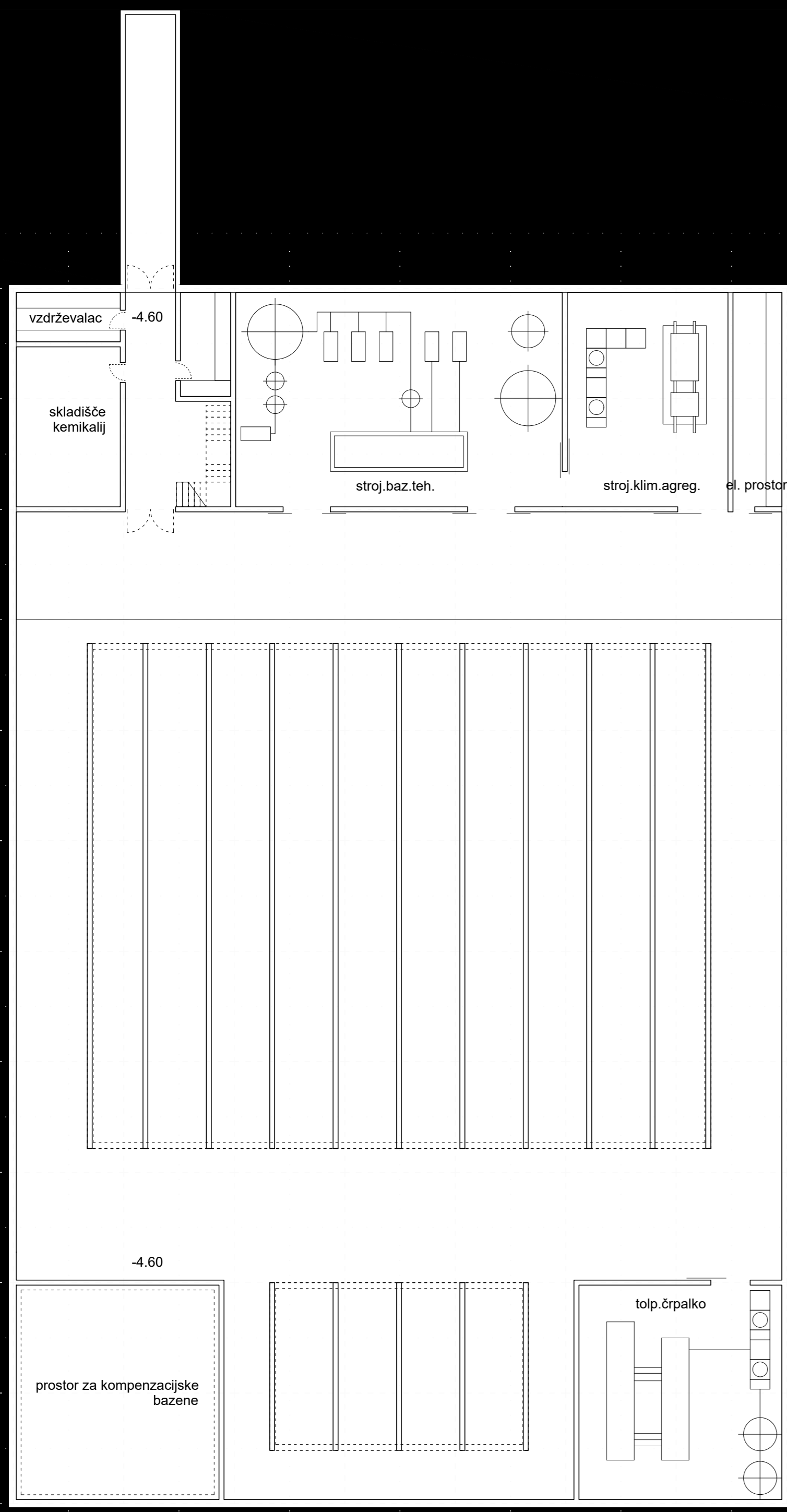
situacija natečajnega območja M 1:500



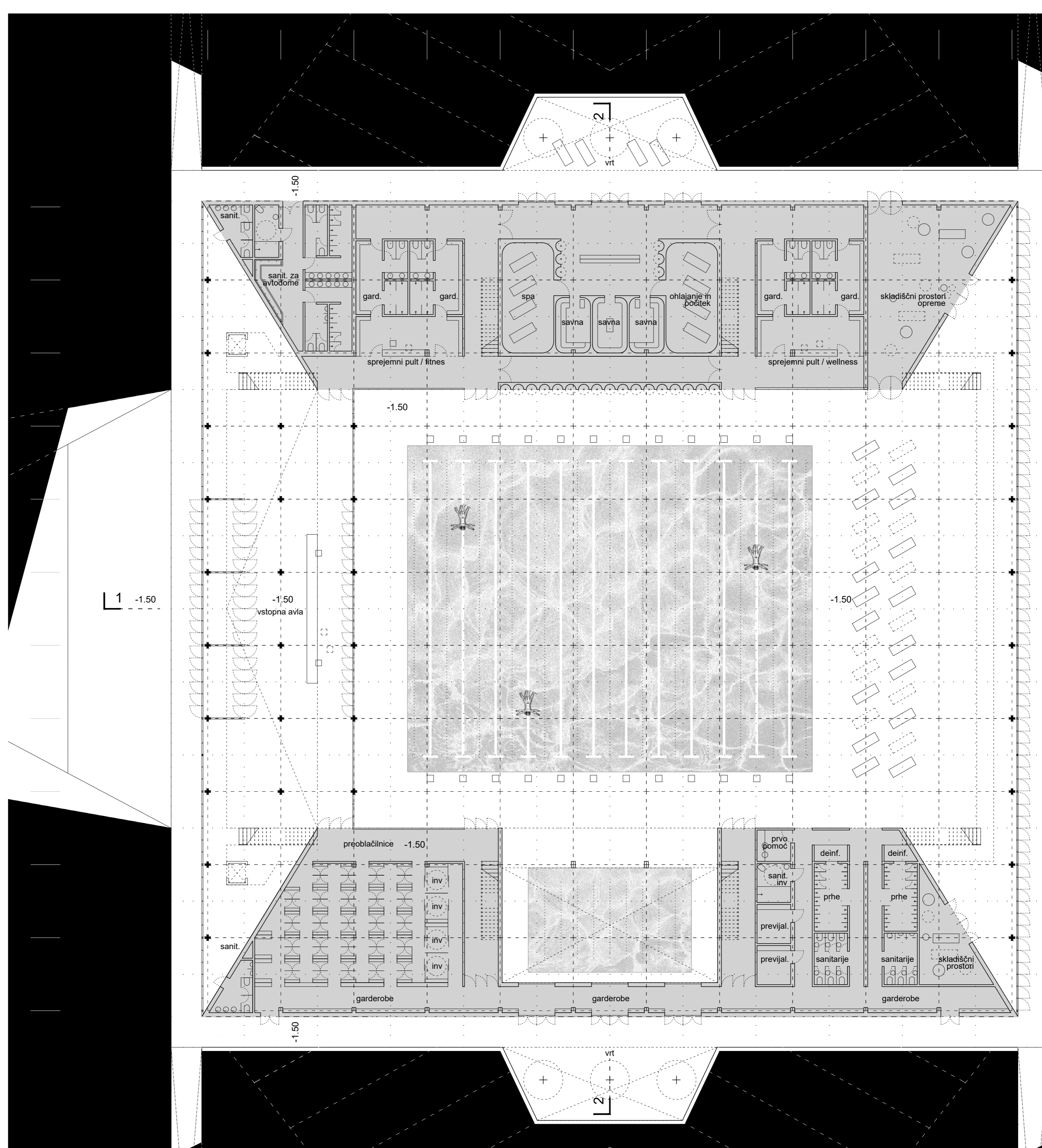
prikaz s dovozne ceste (JV)



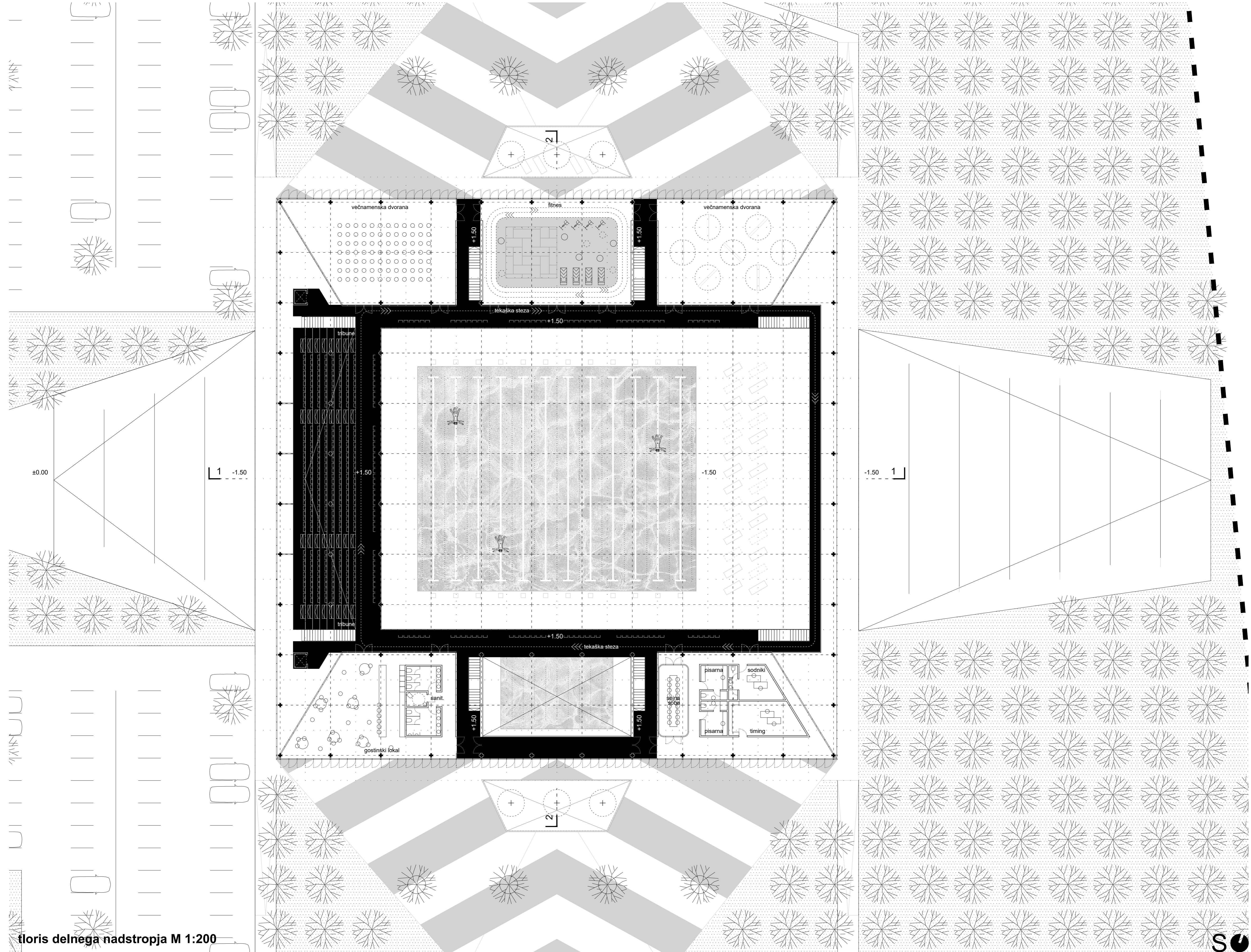
prikaz z rečne strani (S)



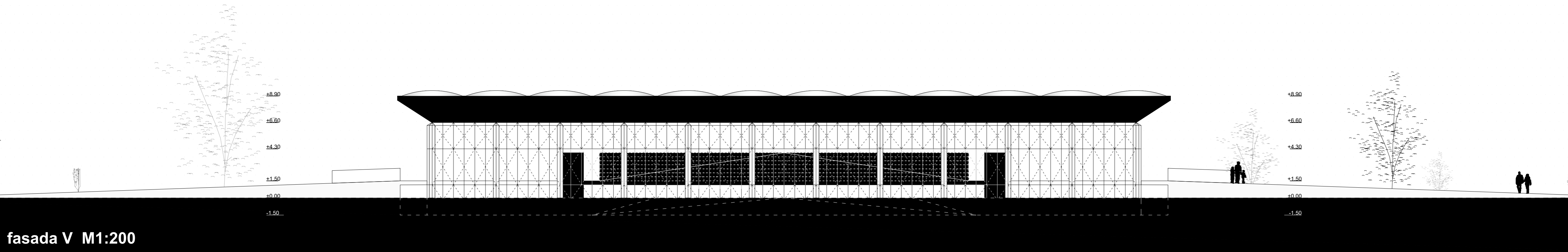
tloris kleti M 1:200



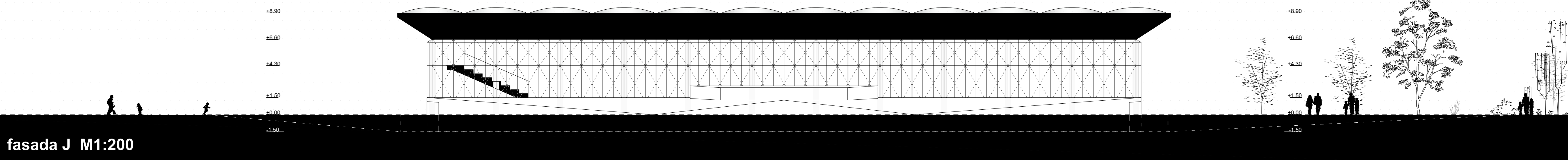
tloris pritličja M 1:200



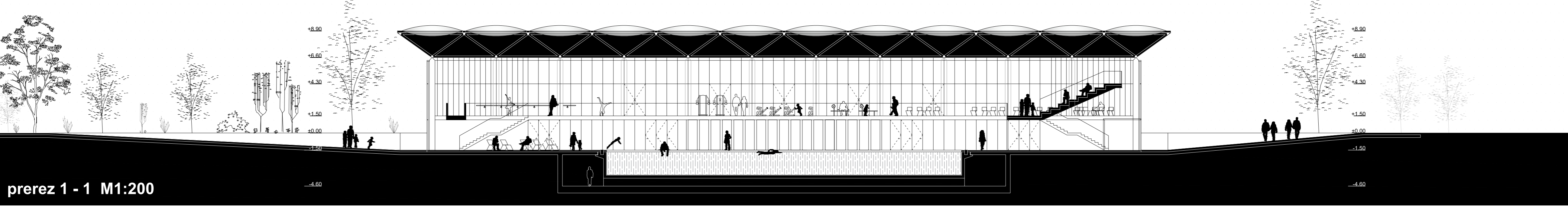
tloris delnega nadstropja M 1:200



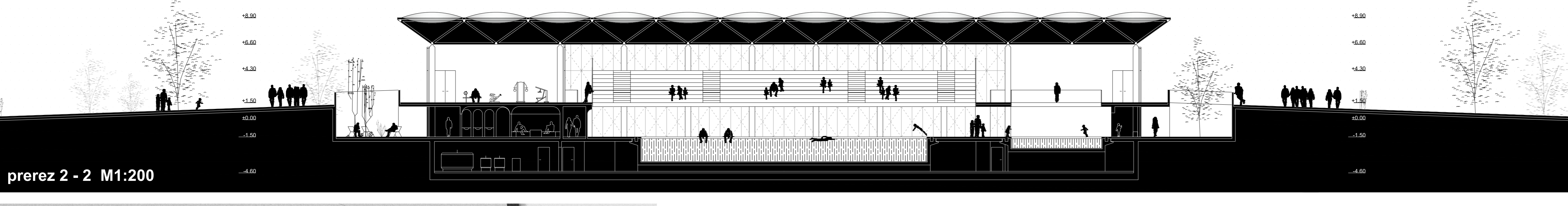
fasada V M1:200



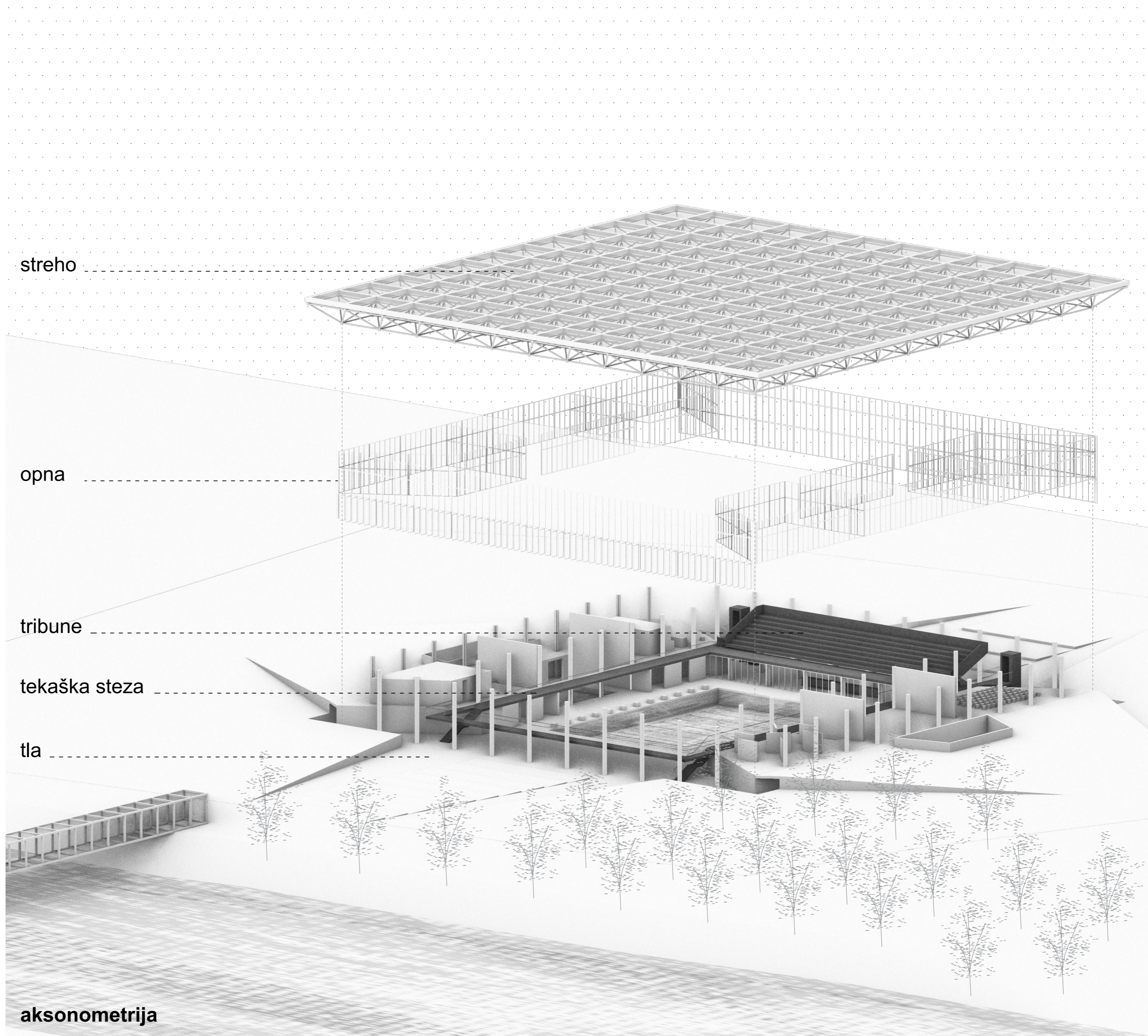
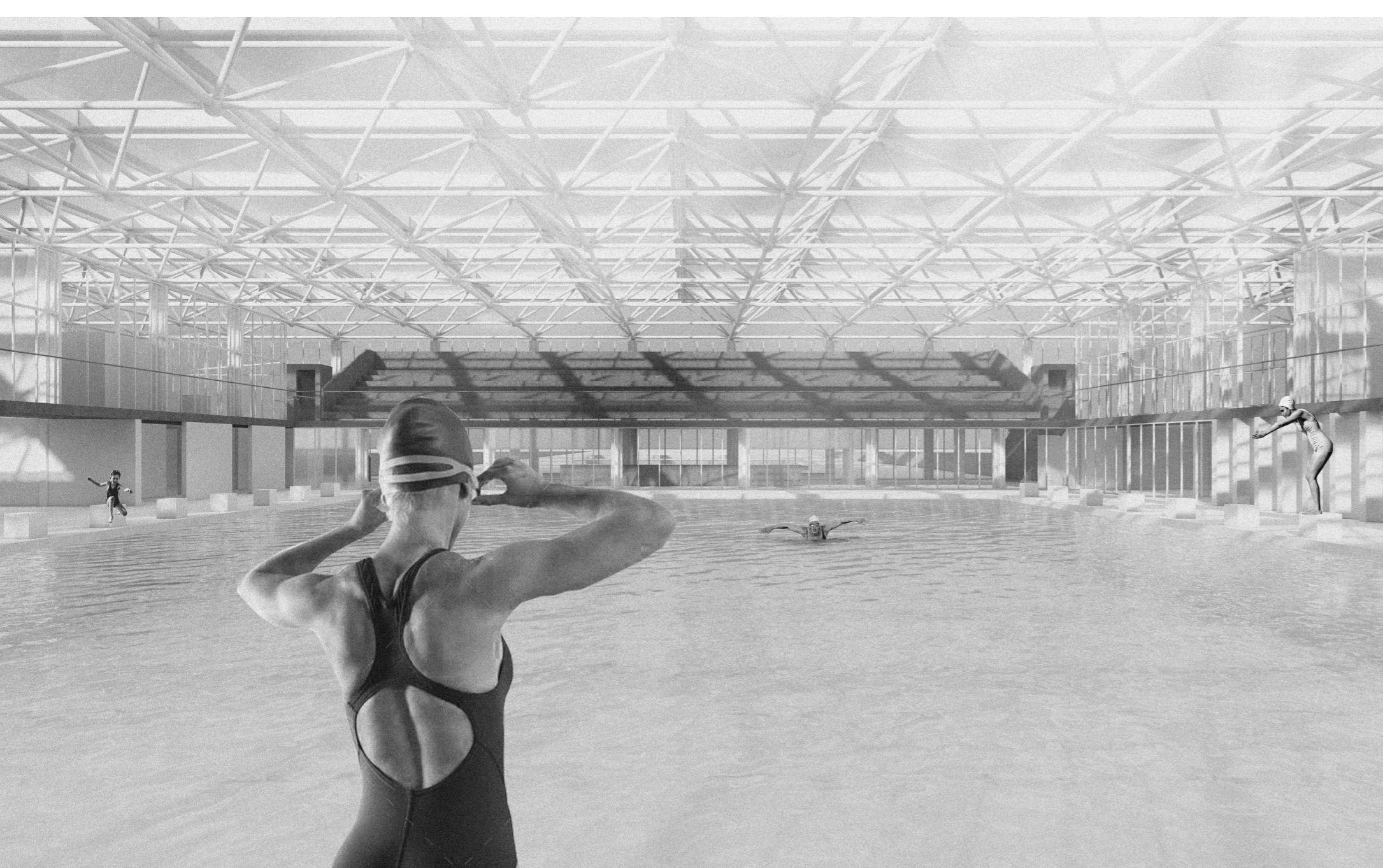
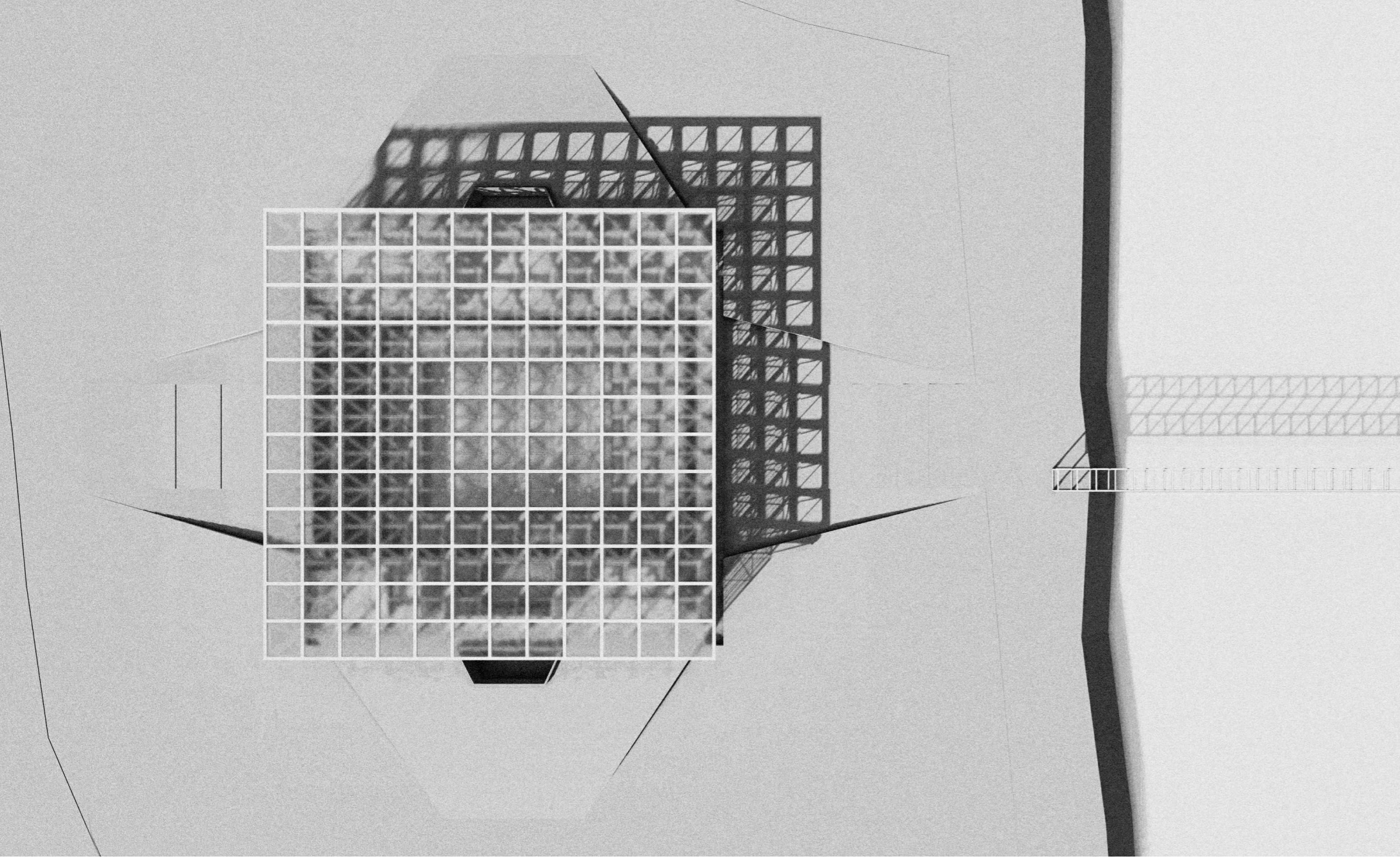
fasada J M1:200



prez 1 - 1 M1:200



prez 2 - 2 M1:200



aksonometrija