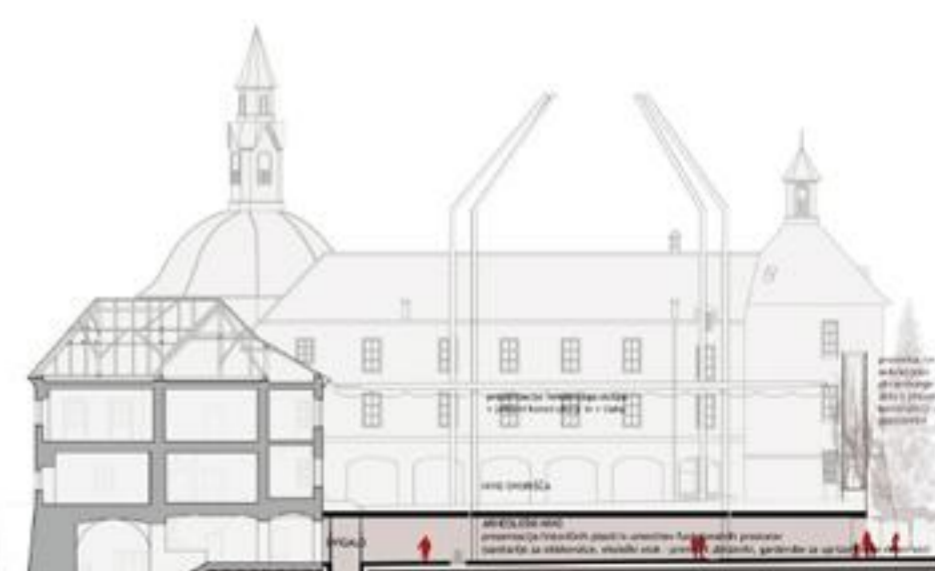
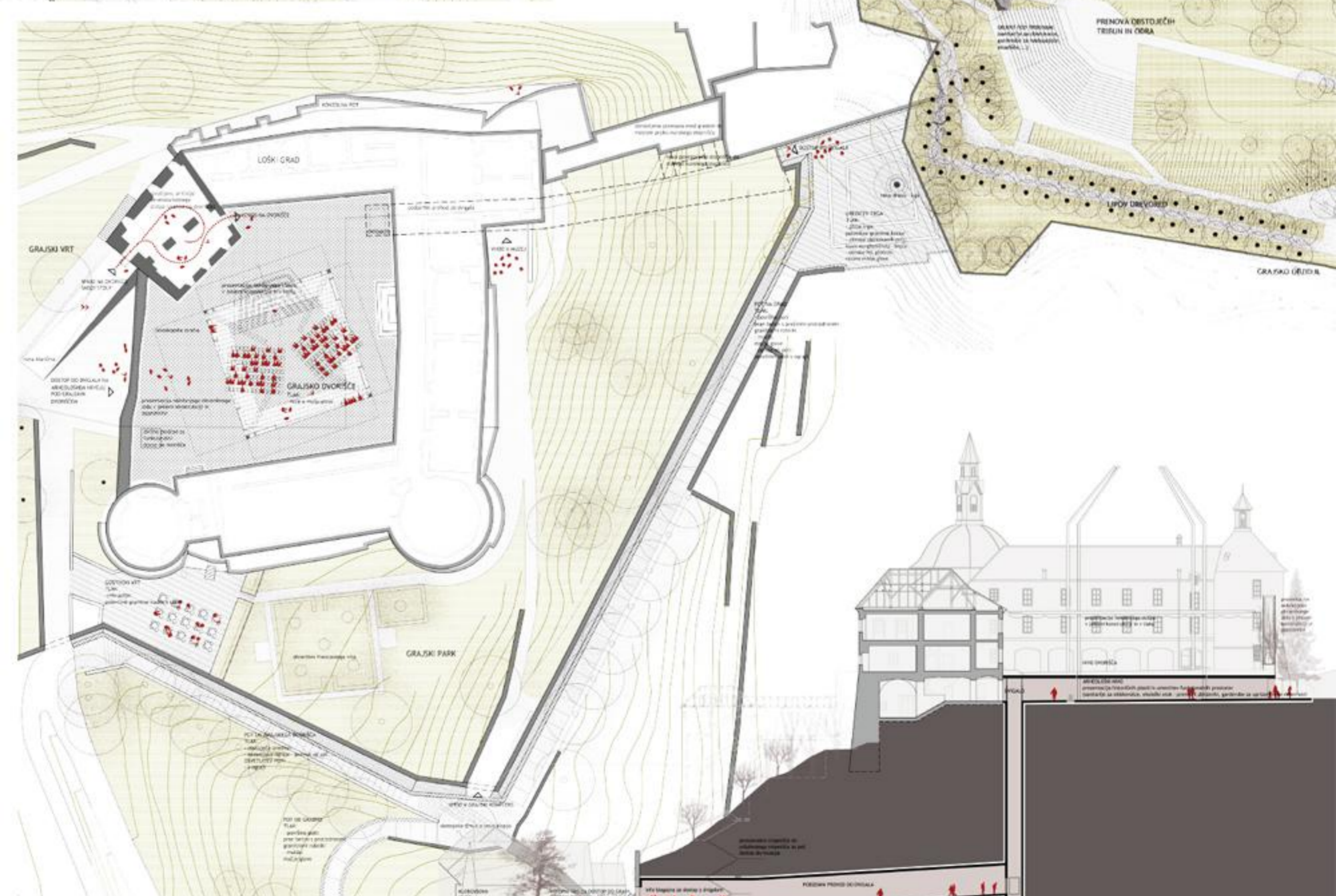
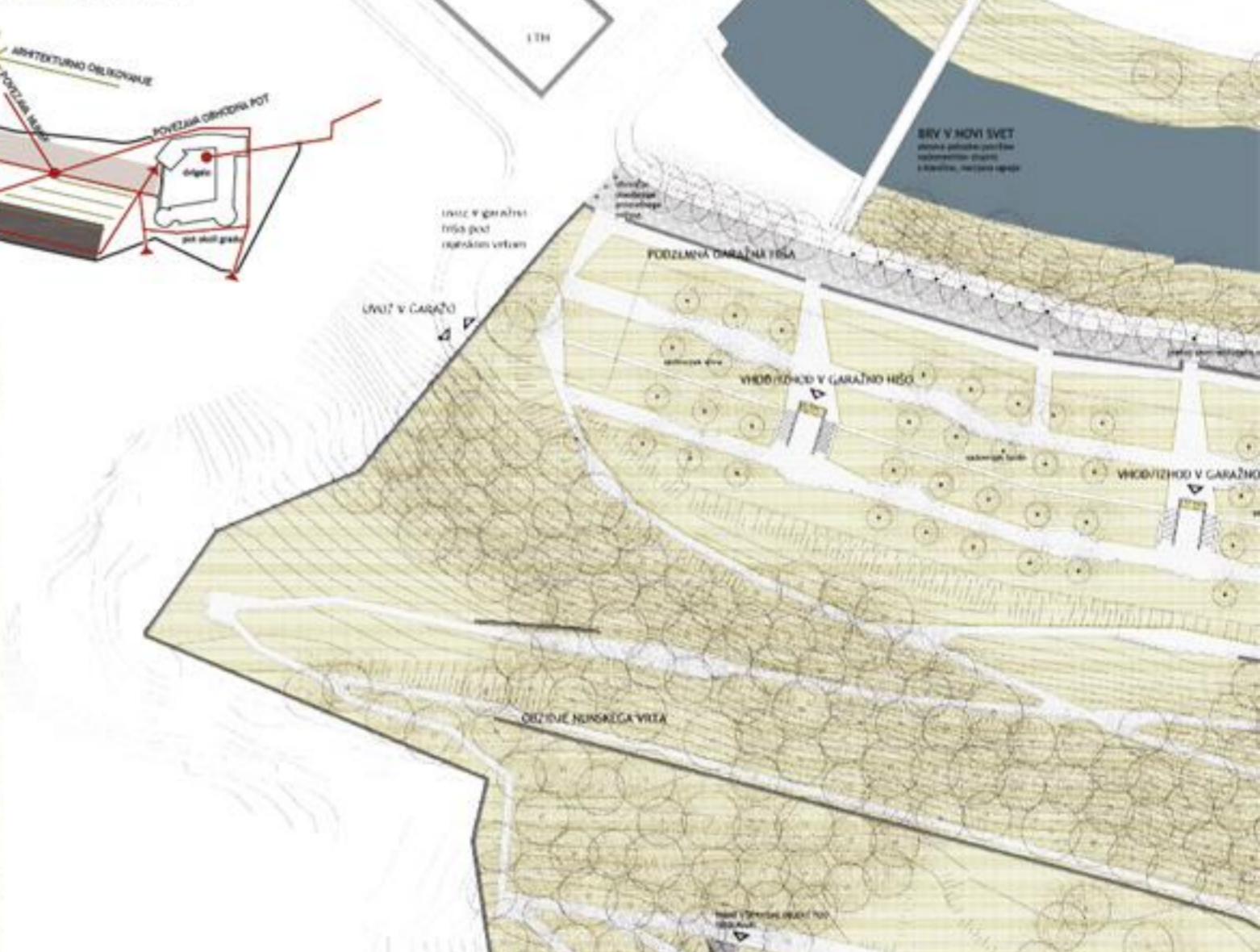
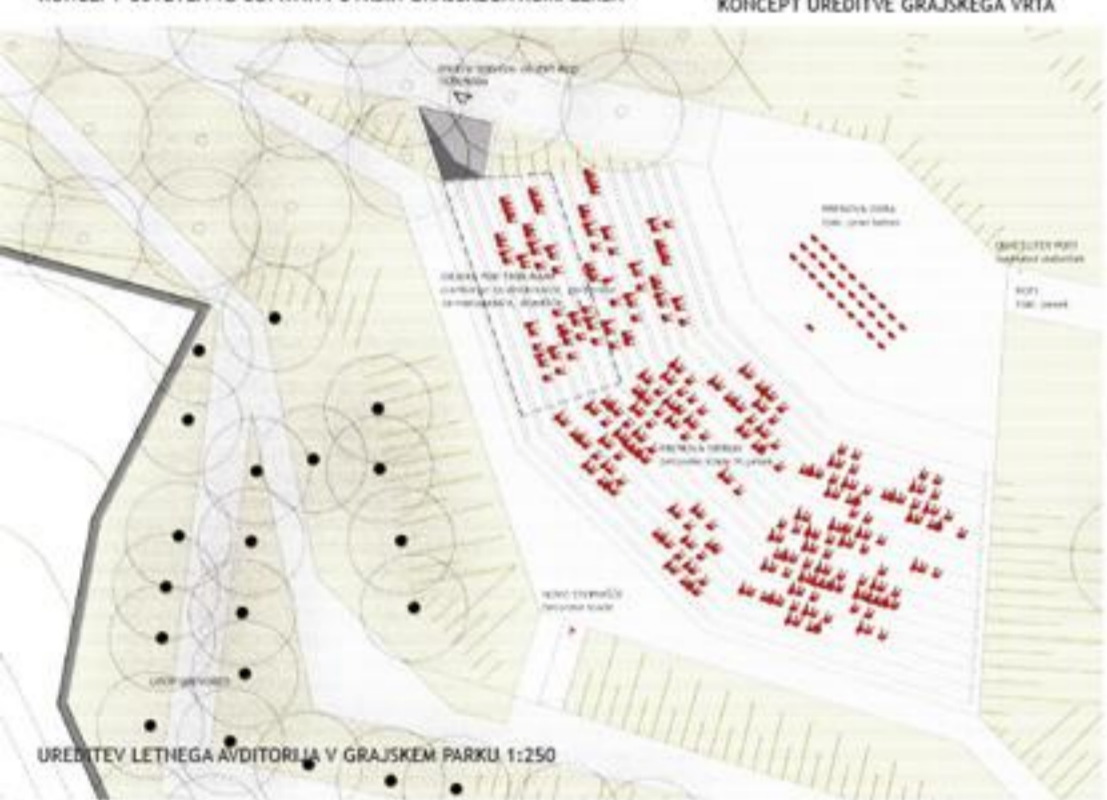
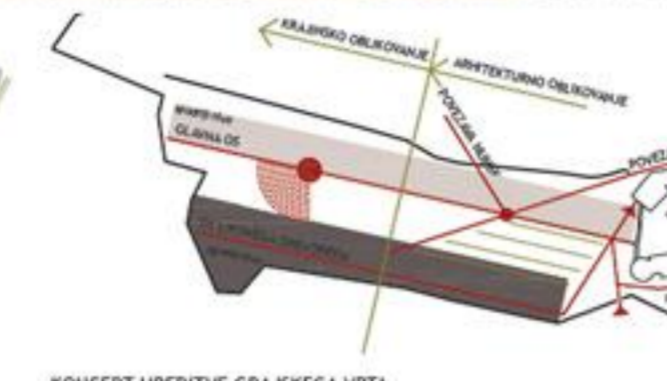


# ŠKOFJA LOKA / PLAKAT 1

## B2 / ODPRTI VRTI / POVRŠINE GRAJSKEGA KOMPLEKSA

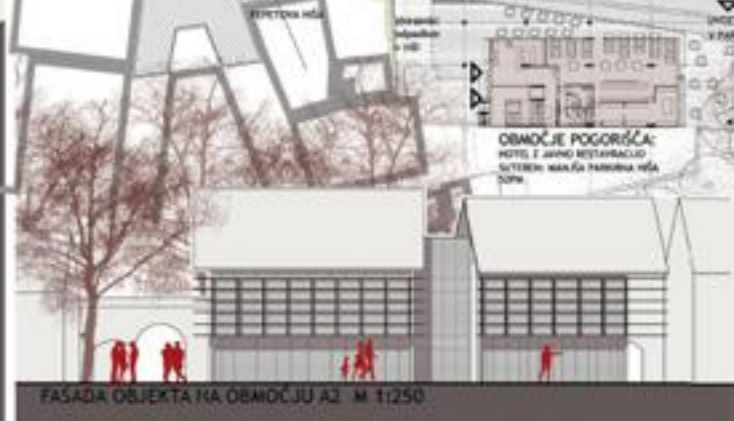
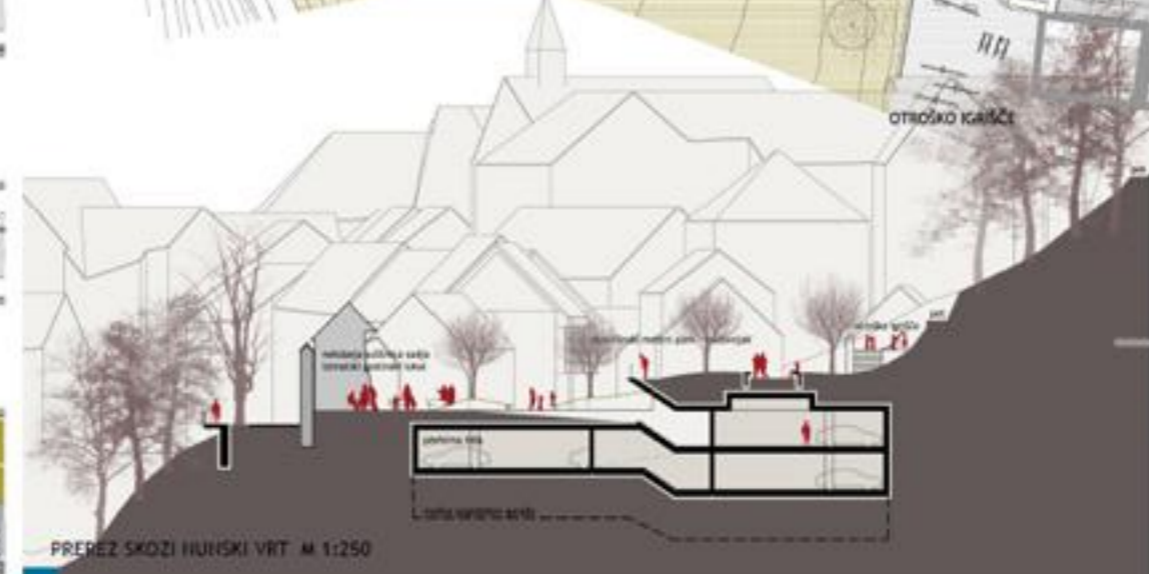


# ŠKOFJA LOKA / PLAKAT 2

A2 / UREDITEV OBMOČJA V LASTI PODJETJA OBRTNIK NA BLAŽEVI ULICI  
B2 / ODRTE JAVNE POVRŠINE GRAJSKEGA KOMPLEKSA



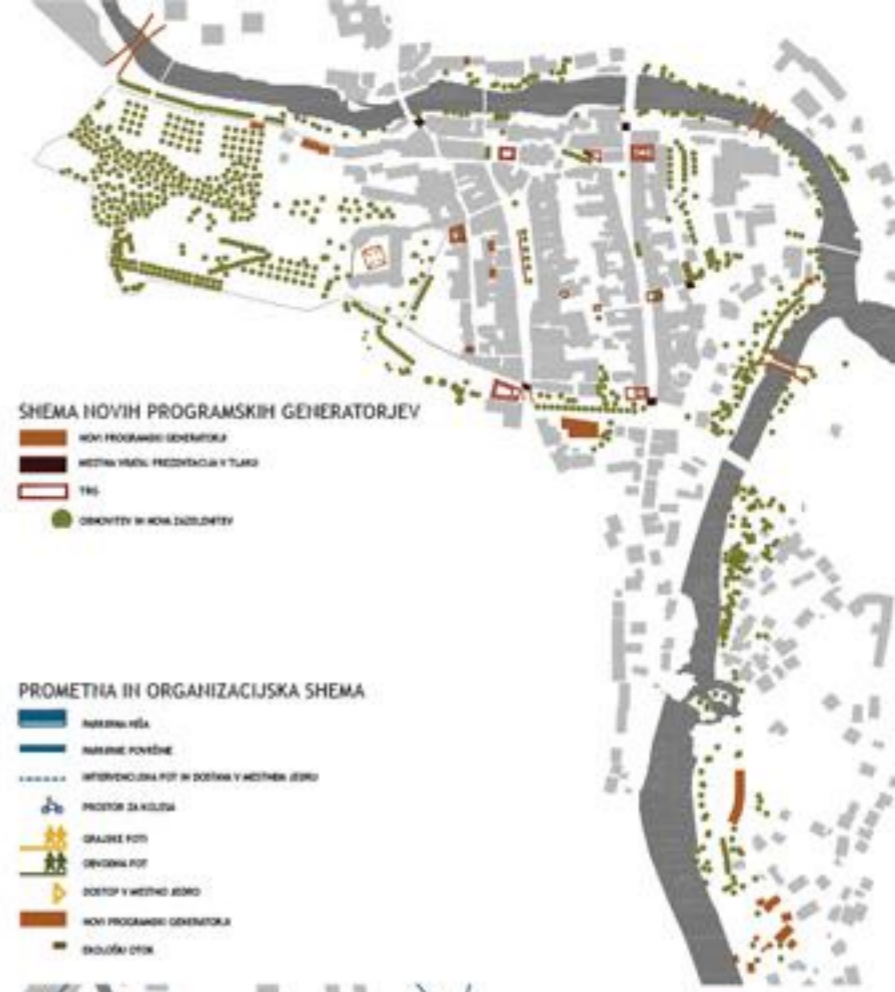
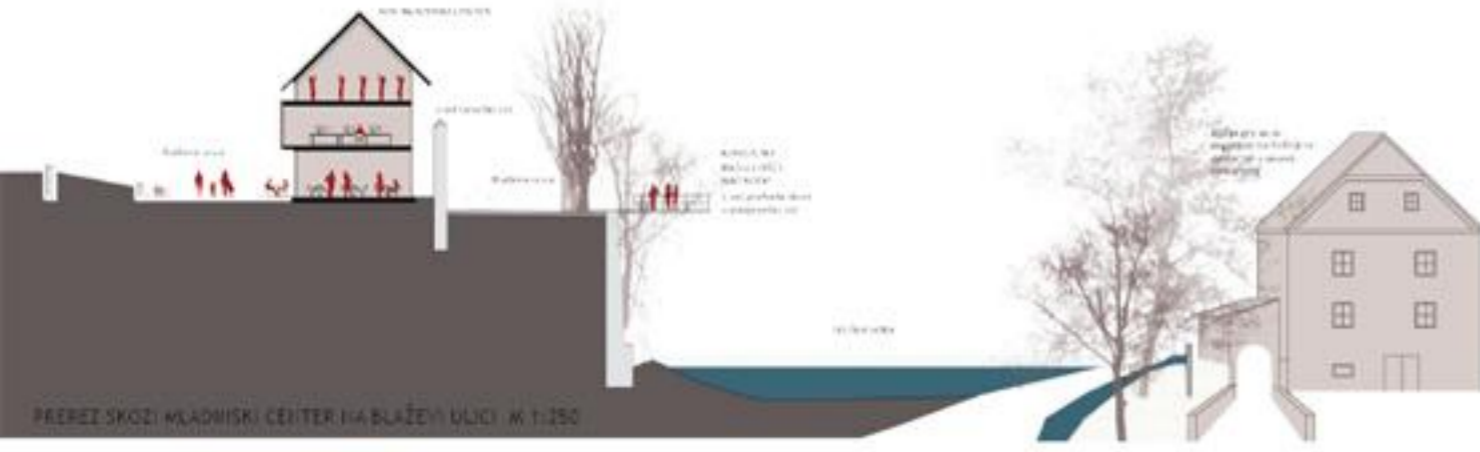
TLORIS OBMOČJA A2 - MAJŠARDA M 1:250



OBMOČJE POGORIŠČA: FOTO: Z. JAVNIK, ARH. S. TRAVNIK

# ŠKOFJA LOKA / PLAKAT 3

## SPLOŠNE SHEME



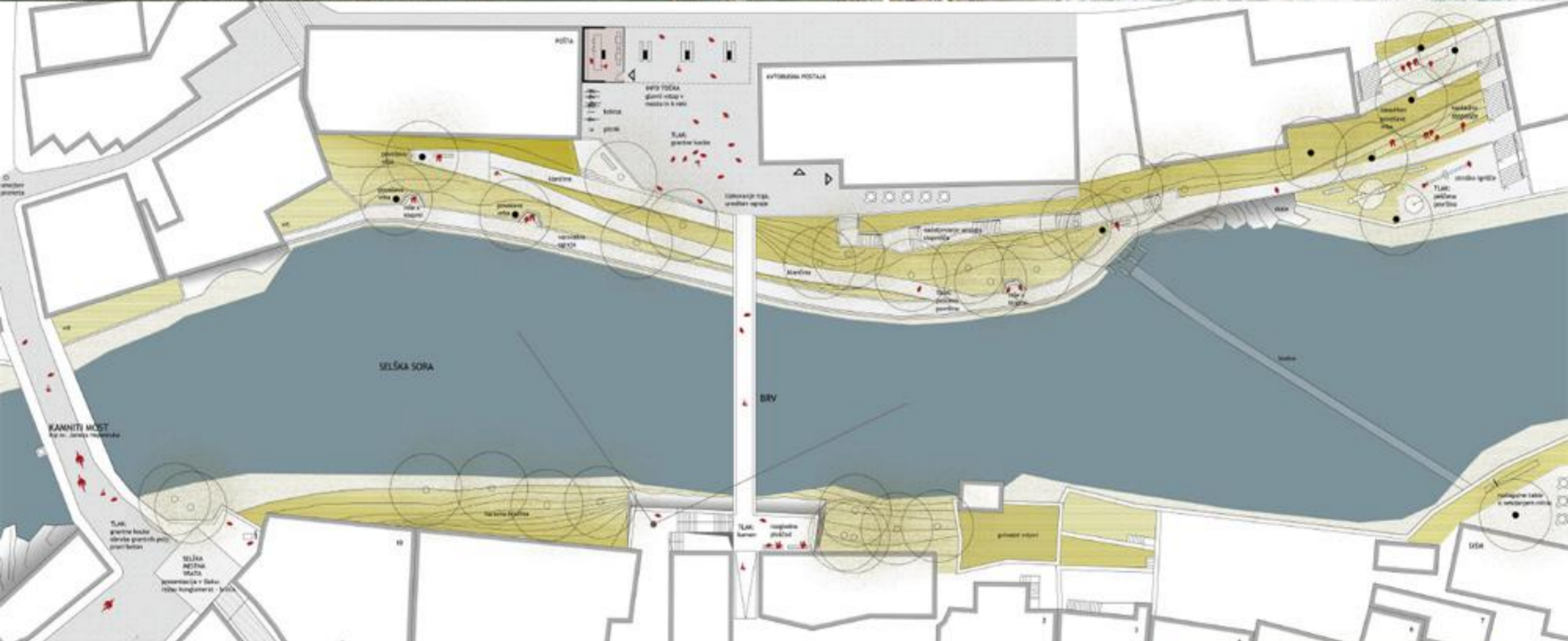
# ŠKOFJA LOKA / PLAKAT 4

## B3 / OBREZJE OBEH SOR

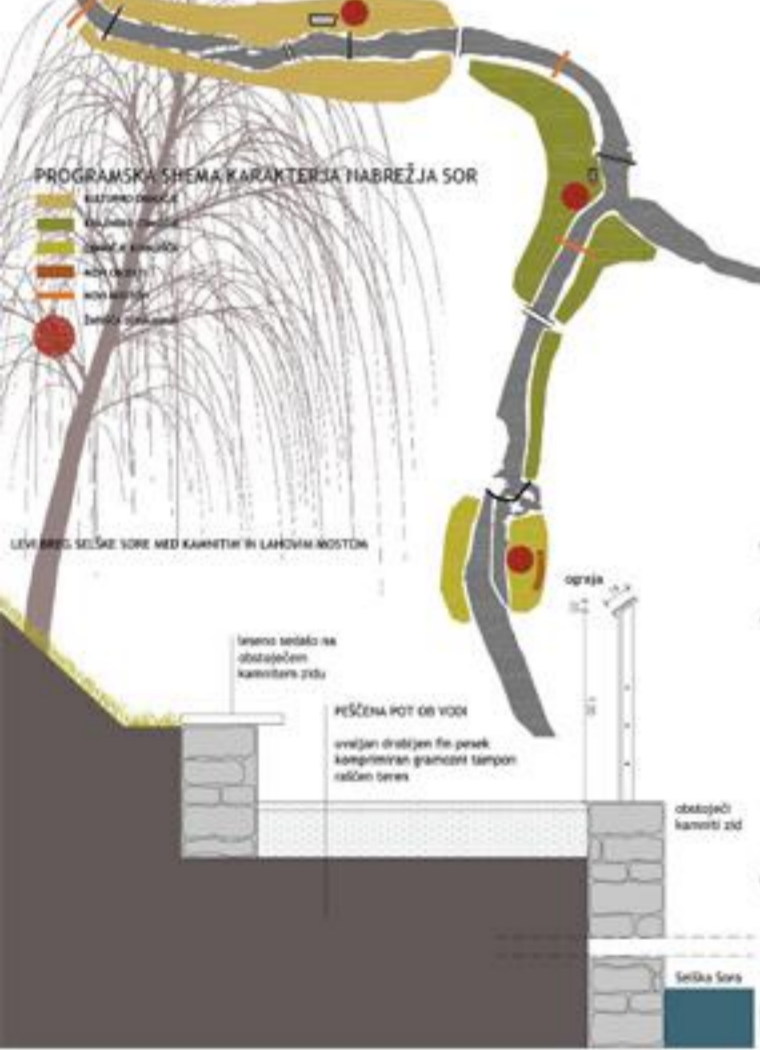


POGLAD NA LEVI BREG SELŠKE SOR PRI AVTOBUSNI POSTAJI

POGLAD NA SOTOČJE OBEH SOR



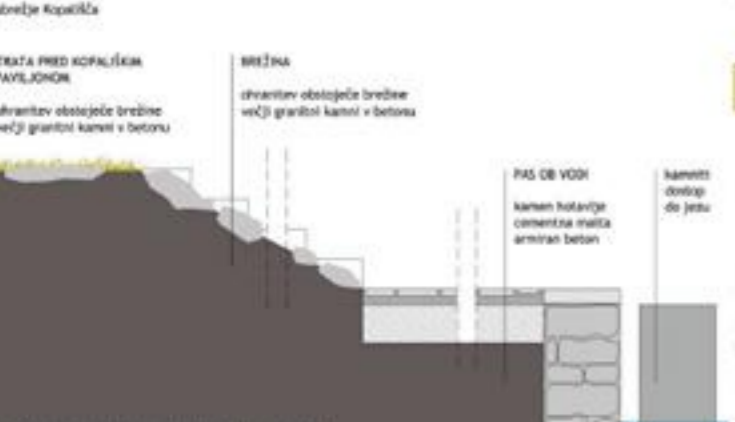
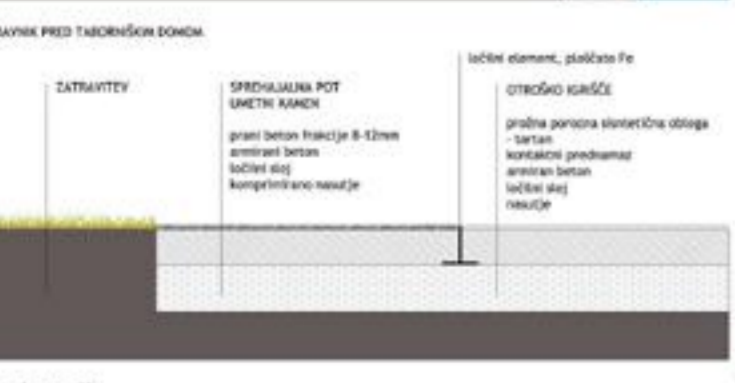
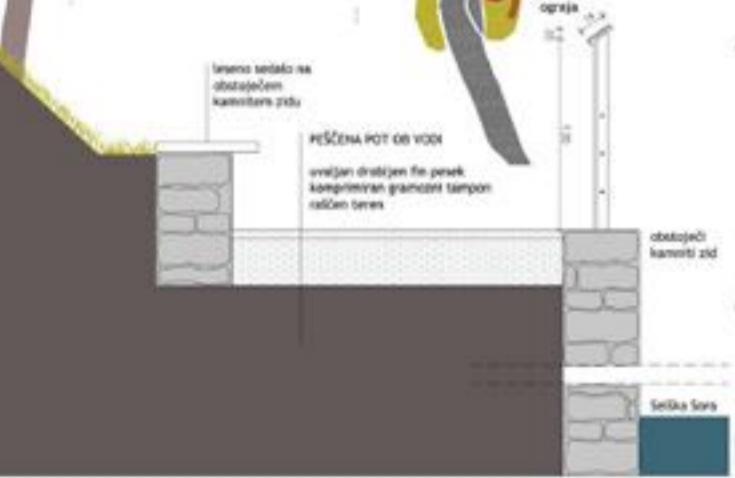
TLOVIS HABREŽJA MED KAMNITIM BI LAHOVIM MOSTOM M 1:250



### PROGRAMSKA ŠHEMA KARAKTERJA HABREŽJA SOR

- izstopno mesto
- prostor za odpočitek
- prostor za igro
- prostor za rekreacijo
- prostor za opazovanje

### LEVI BREG SELŠKE SOR PRED KAMNITIM BI LAHOVIM MOSTOM

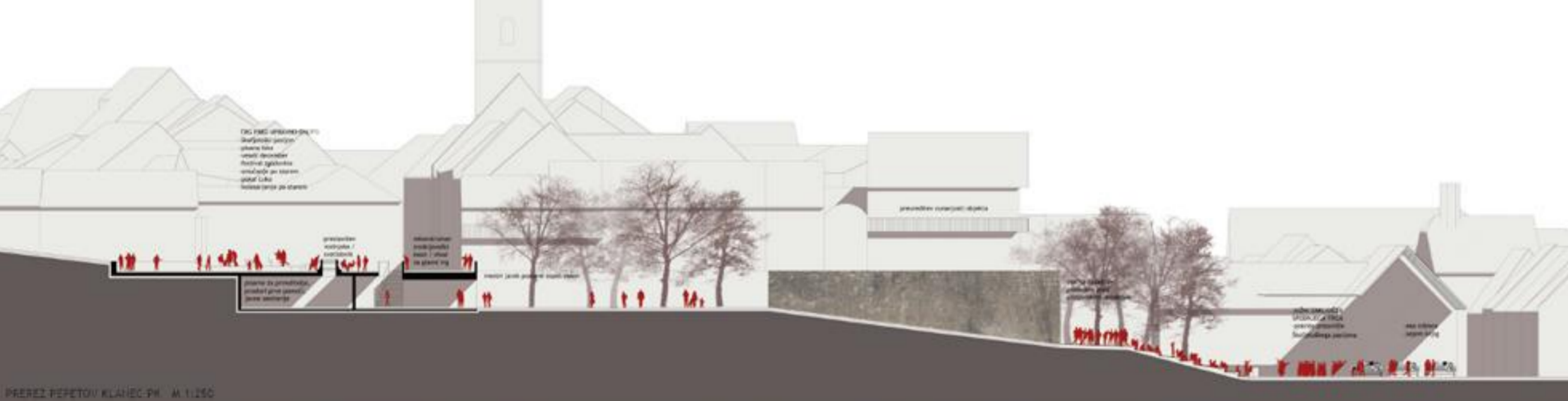
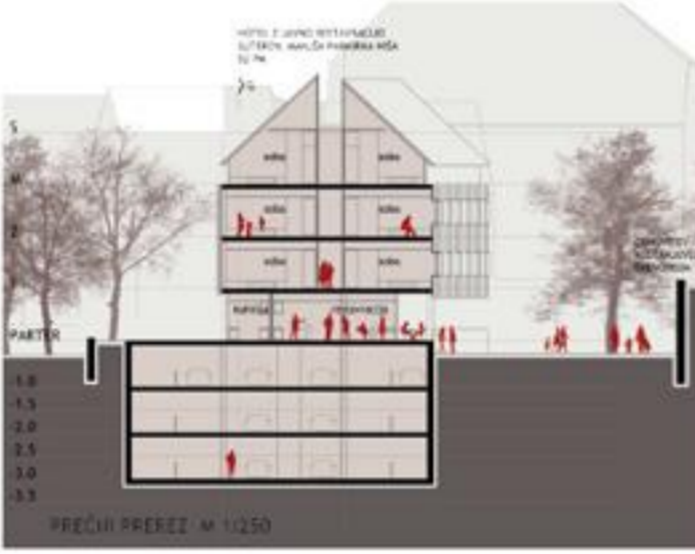
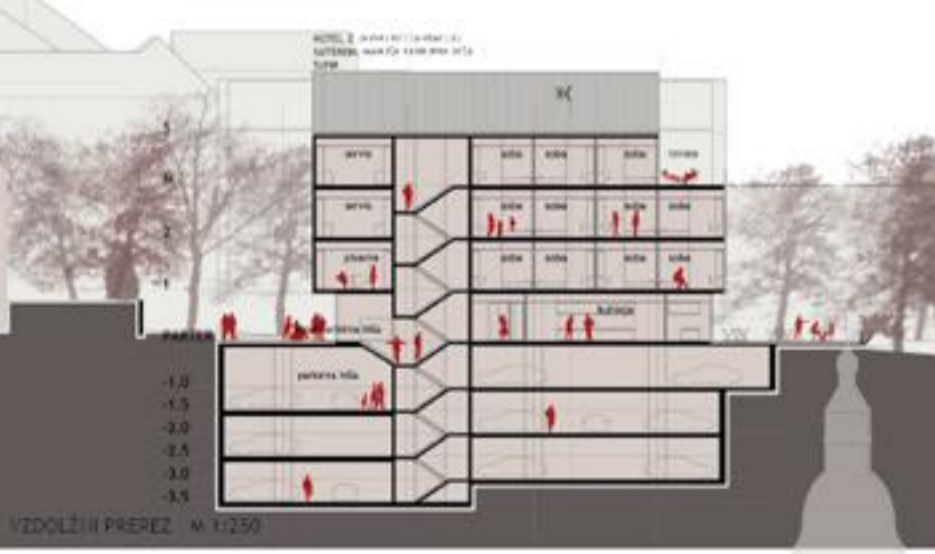
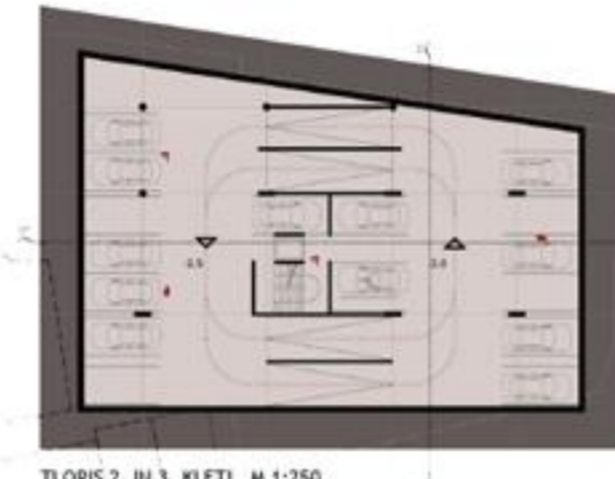
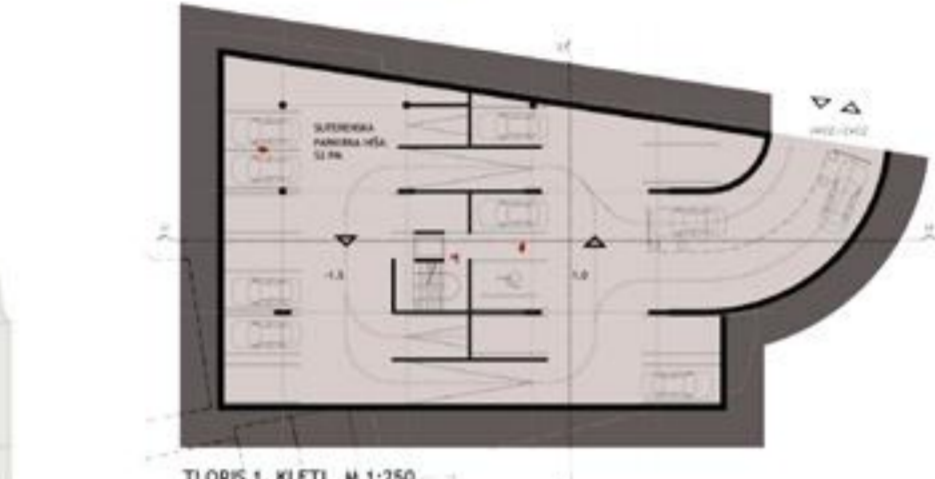


TABORNIŠKI PARK IN SOTOČJE OBEH SOR M 1:250

PRIKAZ ZNAČILNIH TLANOV M 1:250

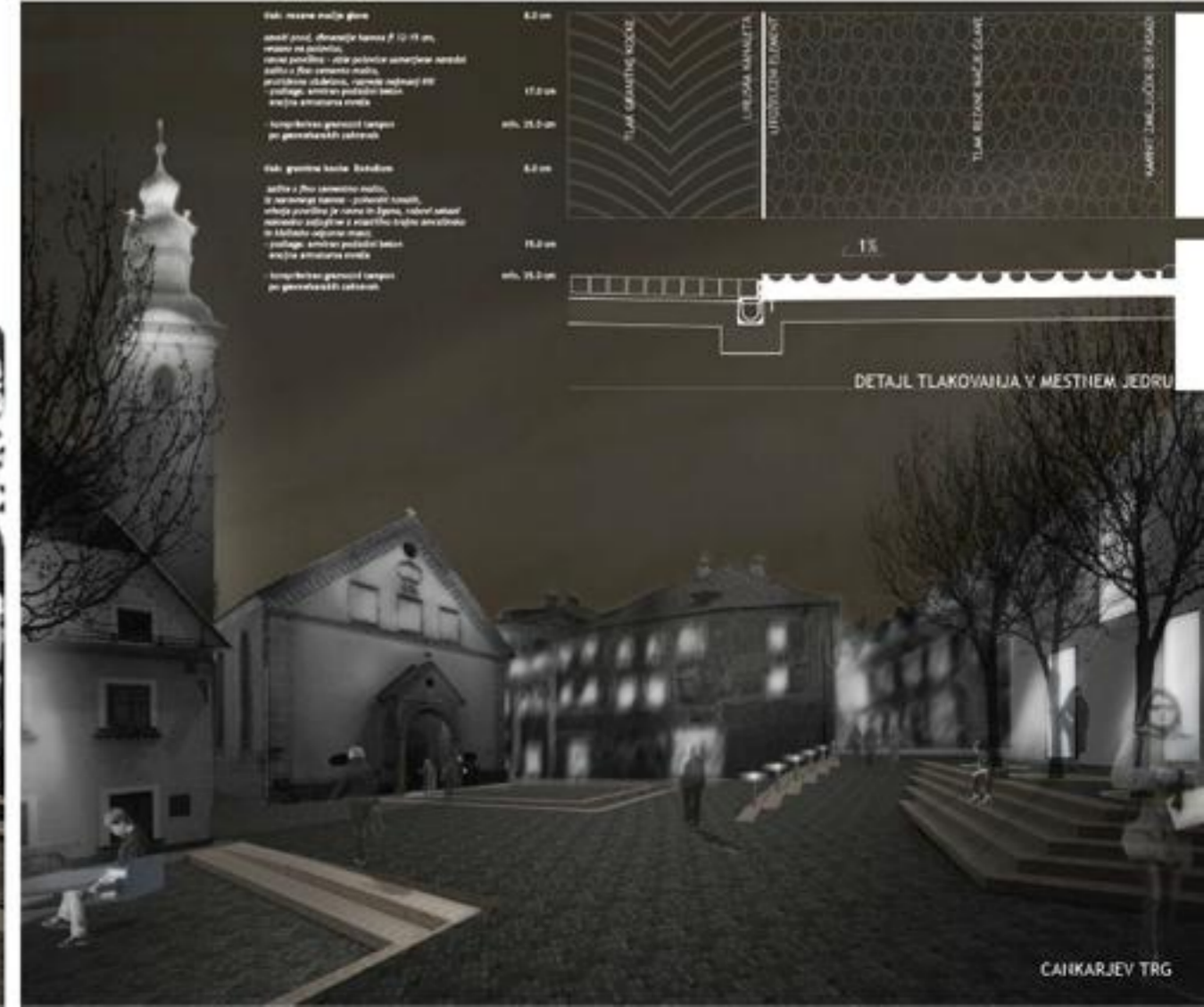
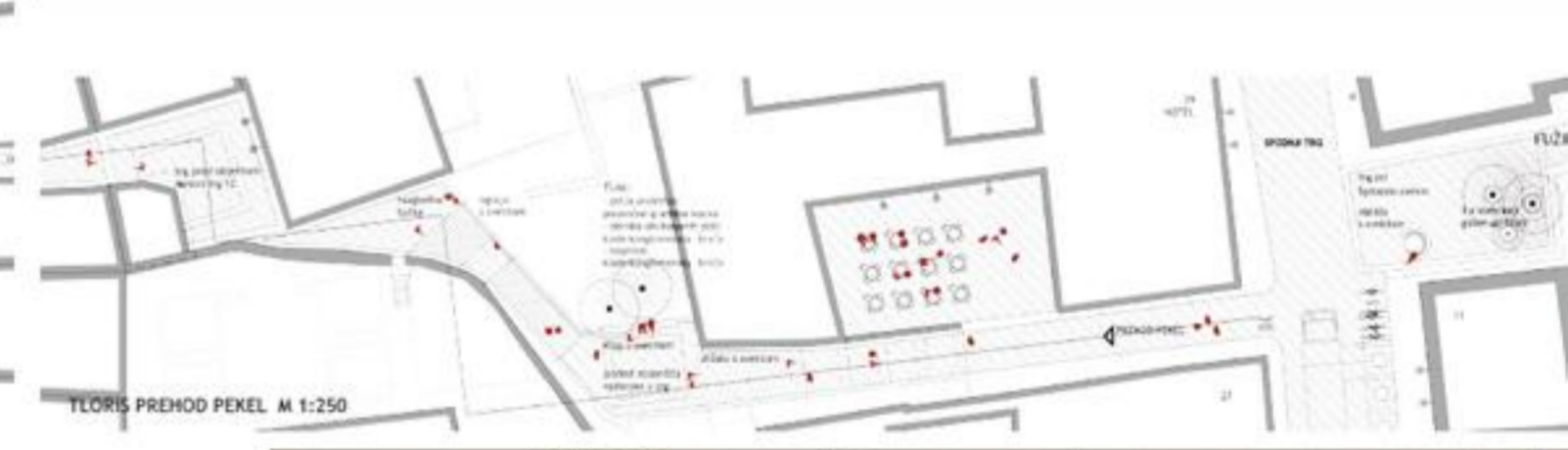
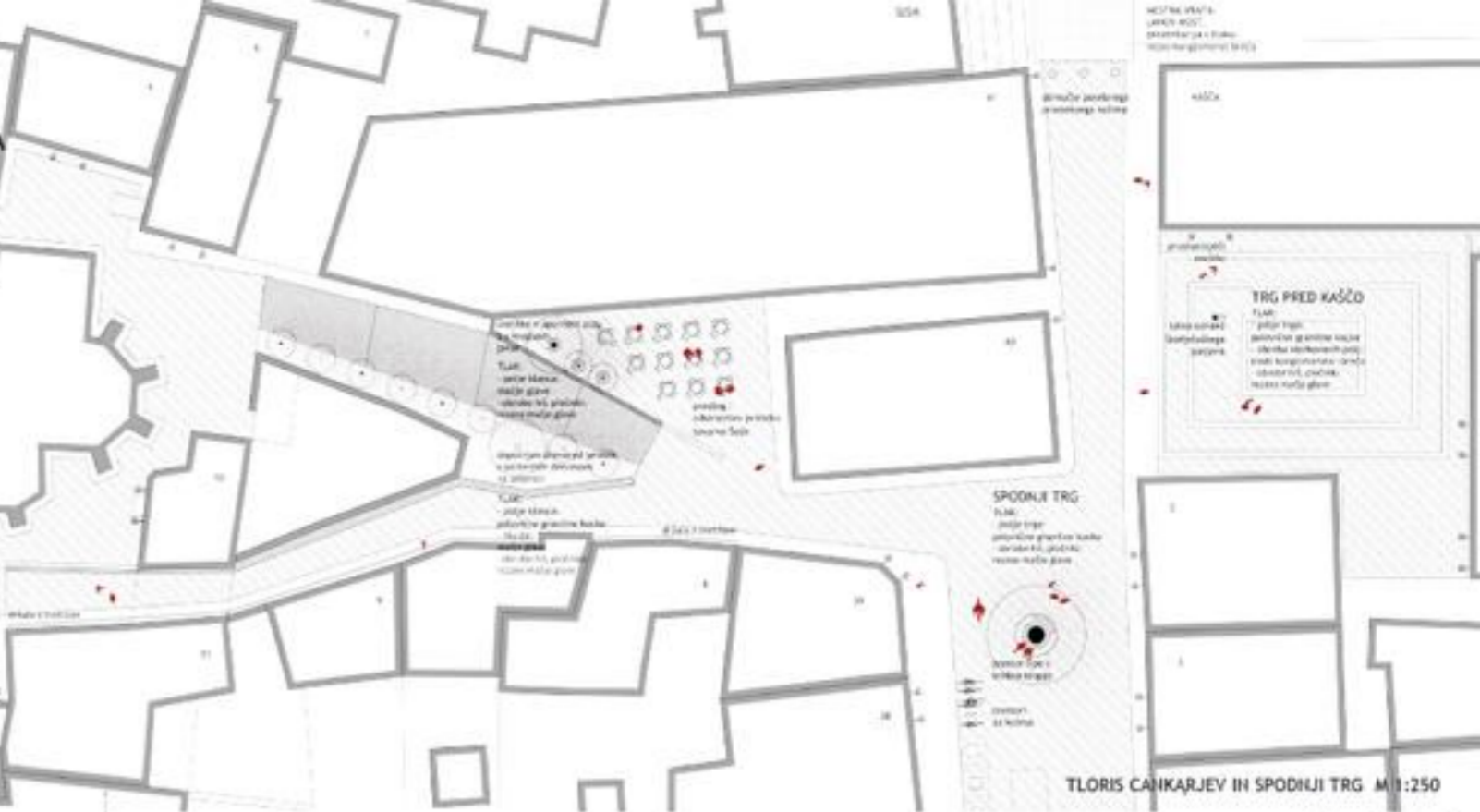
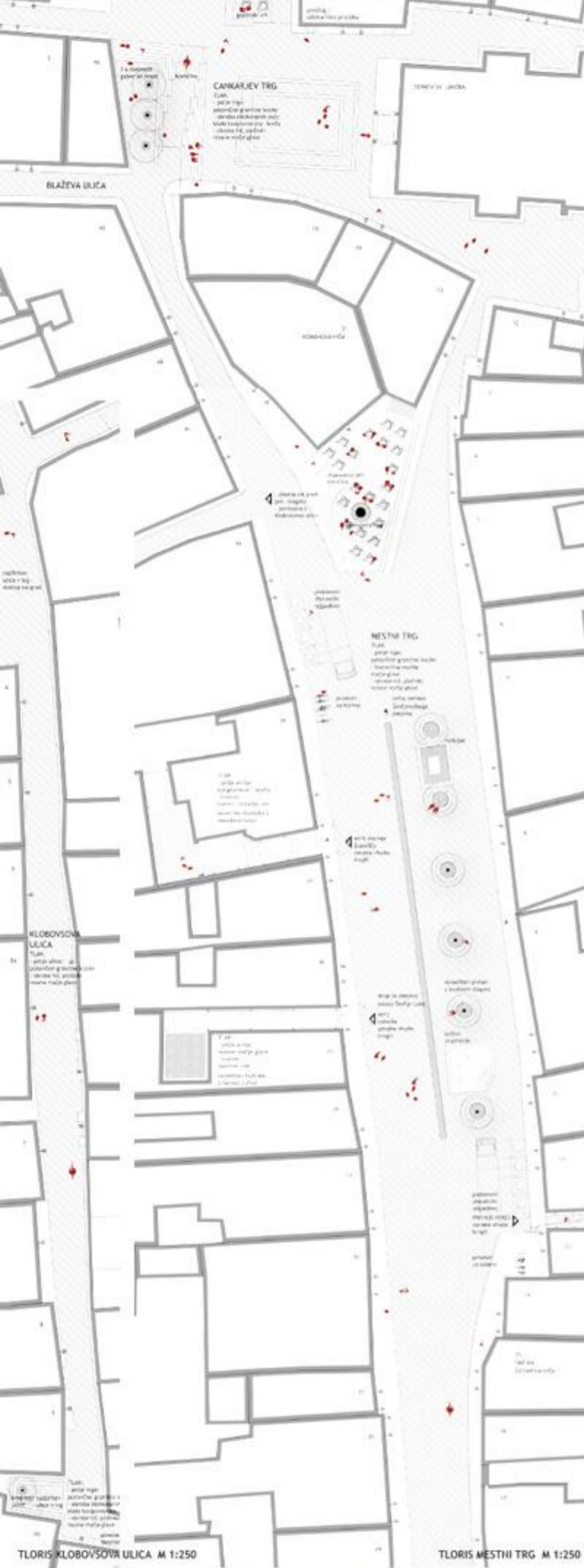
# ŠKOFJA LOKA / PLAKAT 5

A1 / UREDITEV OBMOČJA POGORIŠČA NA PEPETOVEM KLANCU  
 B1 / ODPRTE JAVNE POVRŠINE STAREGA MESTNEGA JEDRA



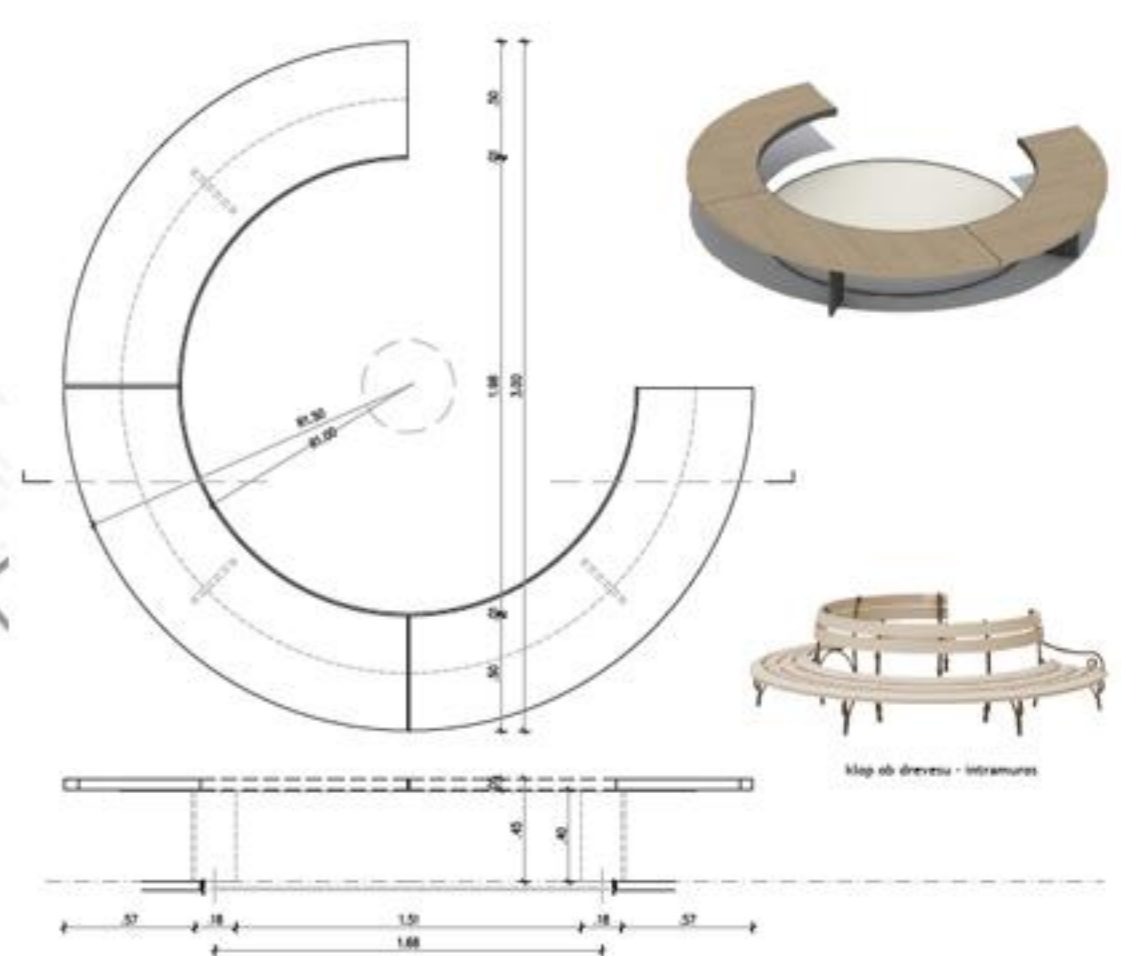
# ŠKOFJA LOKA / PLAKAT 6

## B1 / ODPRTE JAVNE POVRŠINE STAREGA MESTNEGA JEDRA



# ŠKOFJA LOKA / PĻAKAT 7

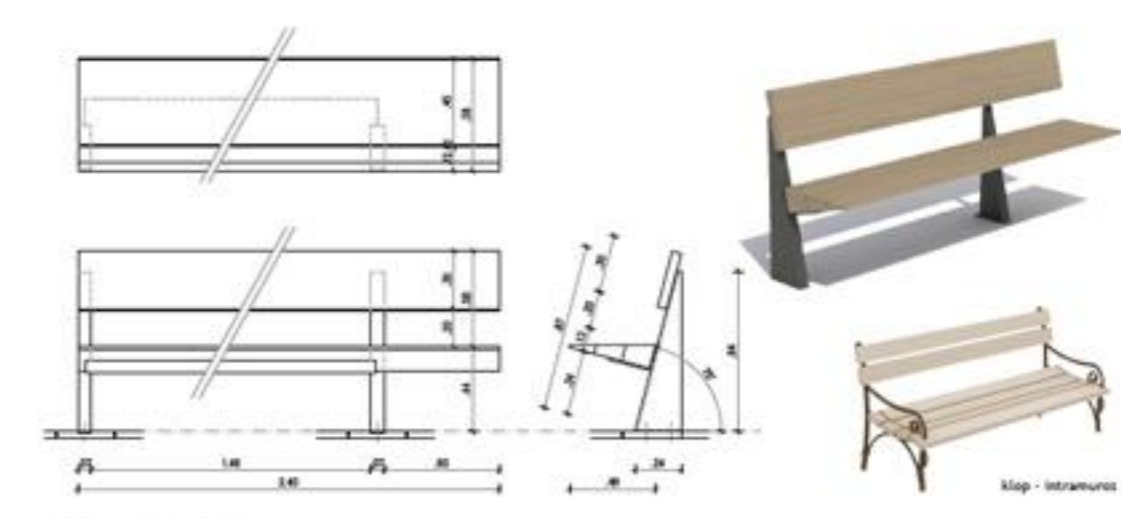
## URBANA OPREMA



Klop ob drevesu - intramuros

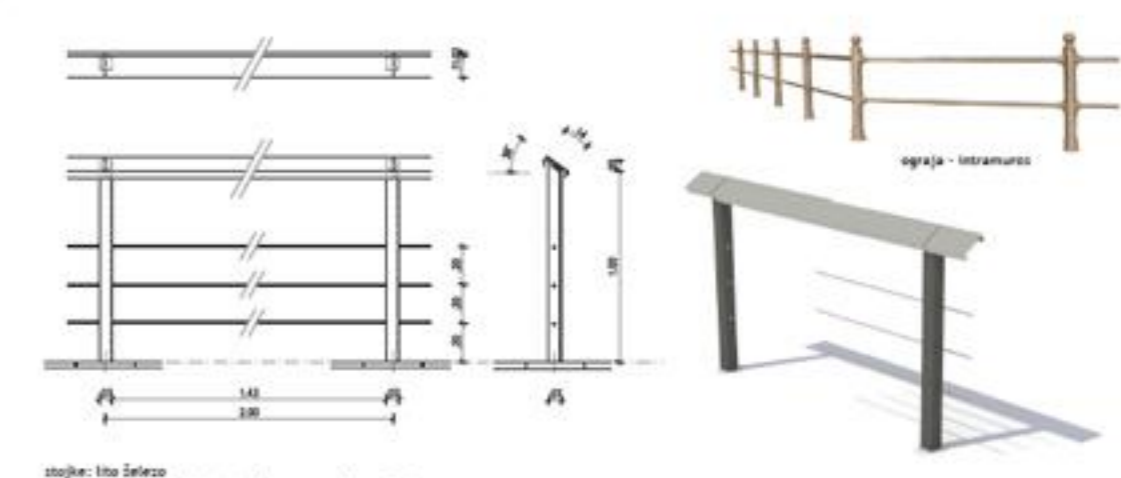
opore: lito železo, barva grafit  
sedišče in naslon: lepjen les

KLOP OB DREVESU M 1:20



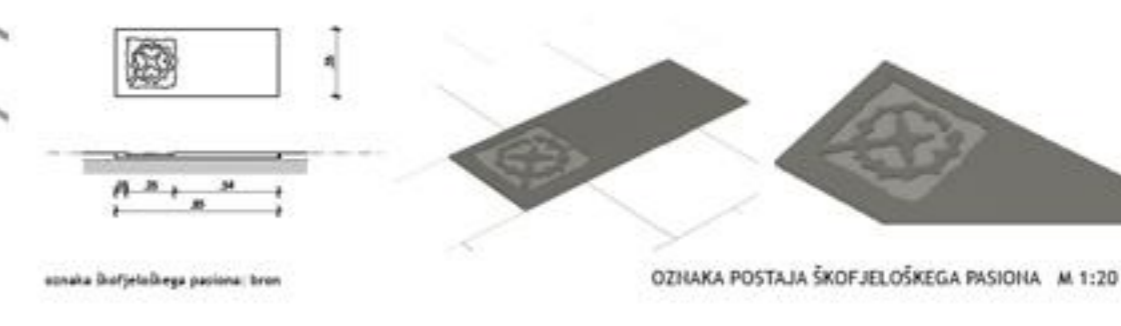
opore: lito železo, barva grafit  
sedišče in naslon: lepjen les

KLOP Z HASLOINOM M 1:20



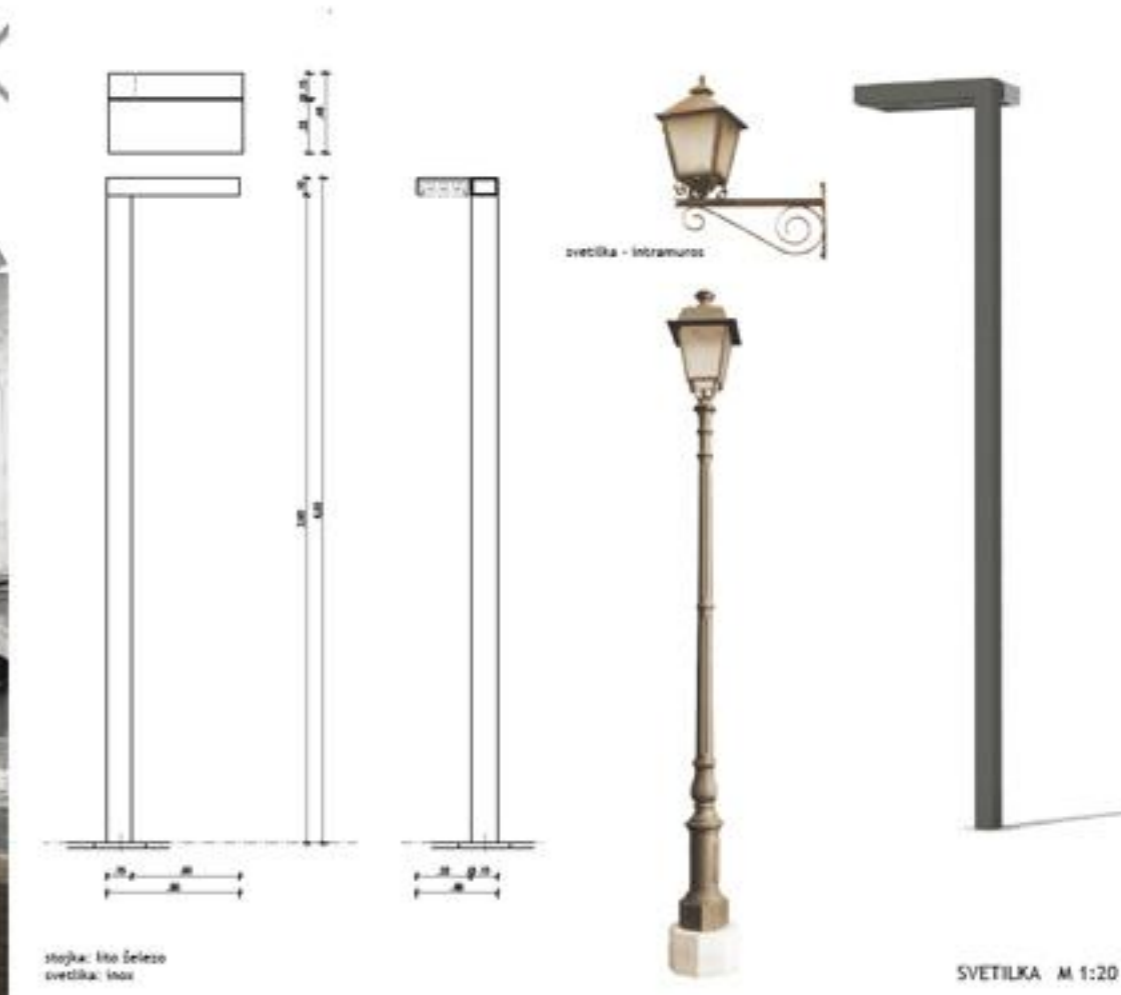
stojke: lito železo  
horizontala: inox pločevina (možnost montaže svetilke)  
pilota: inox pletenica ali brez

VAROVALNA OGRAJA M 1:20



osnaka škofješkega pasiona: bron

OZIČNA POSTAJA ŠKOFJELOŠKEGA PASIONA M 1:20



stojka: lito železo  
svetilka: inox

SVETILKA M 1:20



# ŠKOFJA LOKA / PLAKAT 8

## A3 / UREDITEV KOPALNEGA OBMOČJA V PUŠTALU

### URBANA OPREMA

