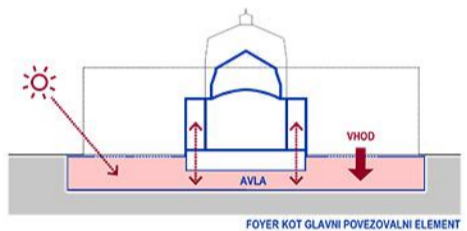
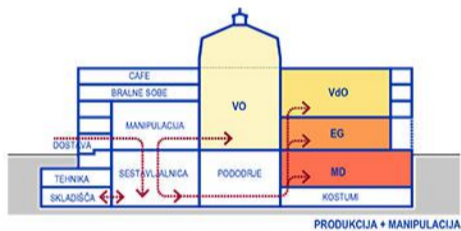
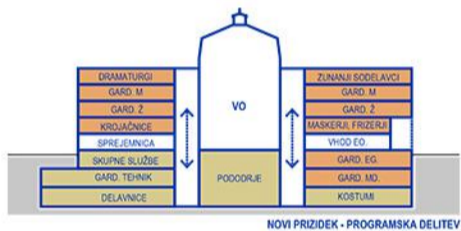
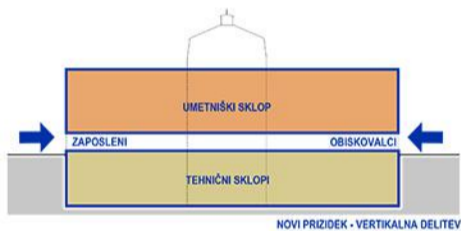
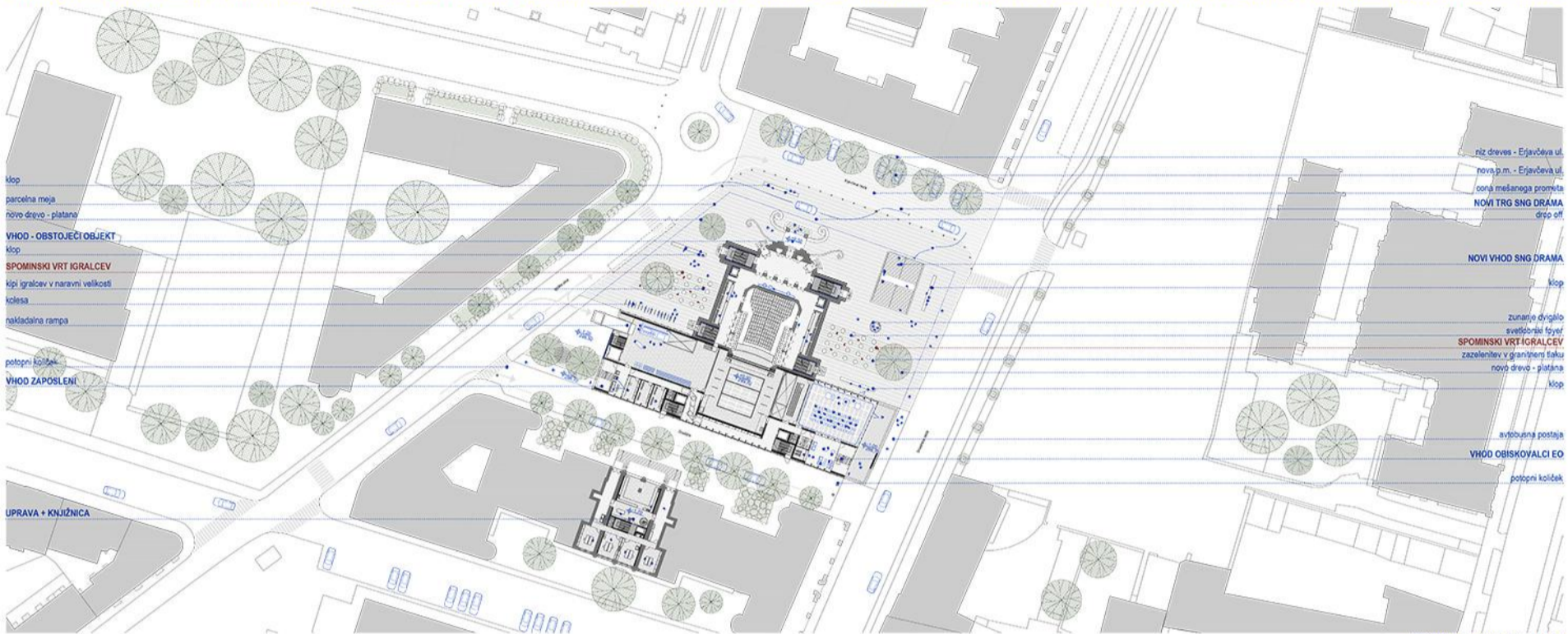
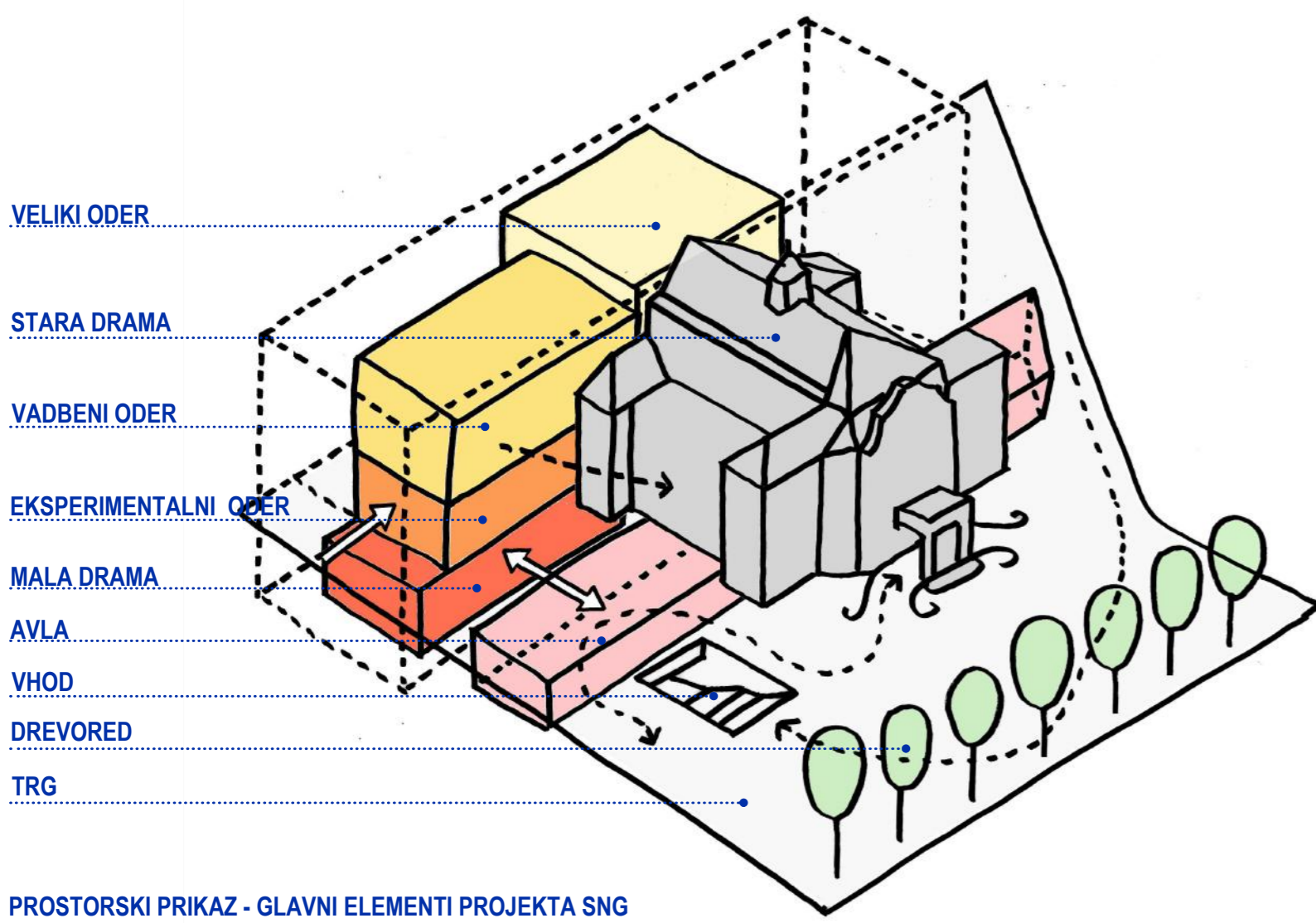


STARA DRAMA, NOVI PRIZIDEK IN NOVI TRG SO NERAZDRUŽLJIVI DELI ISTEGA PROSTORSKEGA KONCEPTA - DELUJEJO KOT "URBANI GENERATOR ŽIVLJENJA" IN NOVA TOČKA V MESTU OB PROGRAMSKI OSI SLOVENSKE CESTE.

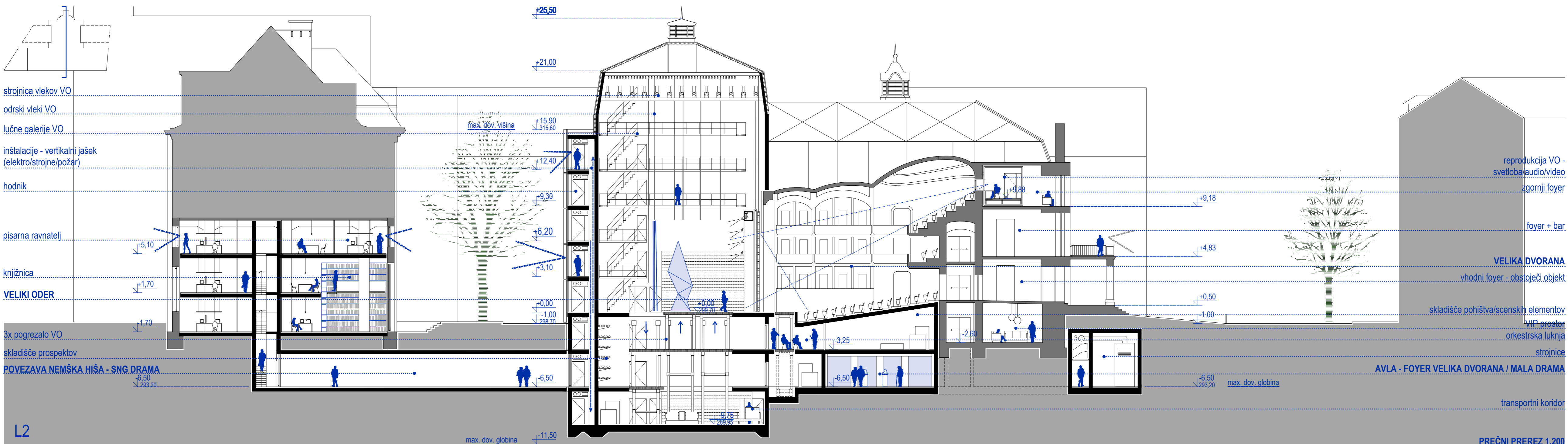
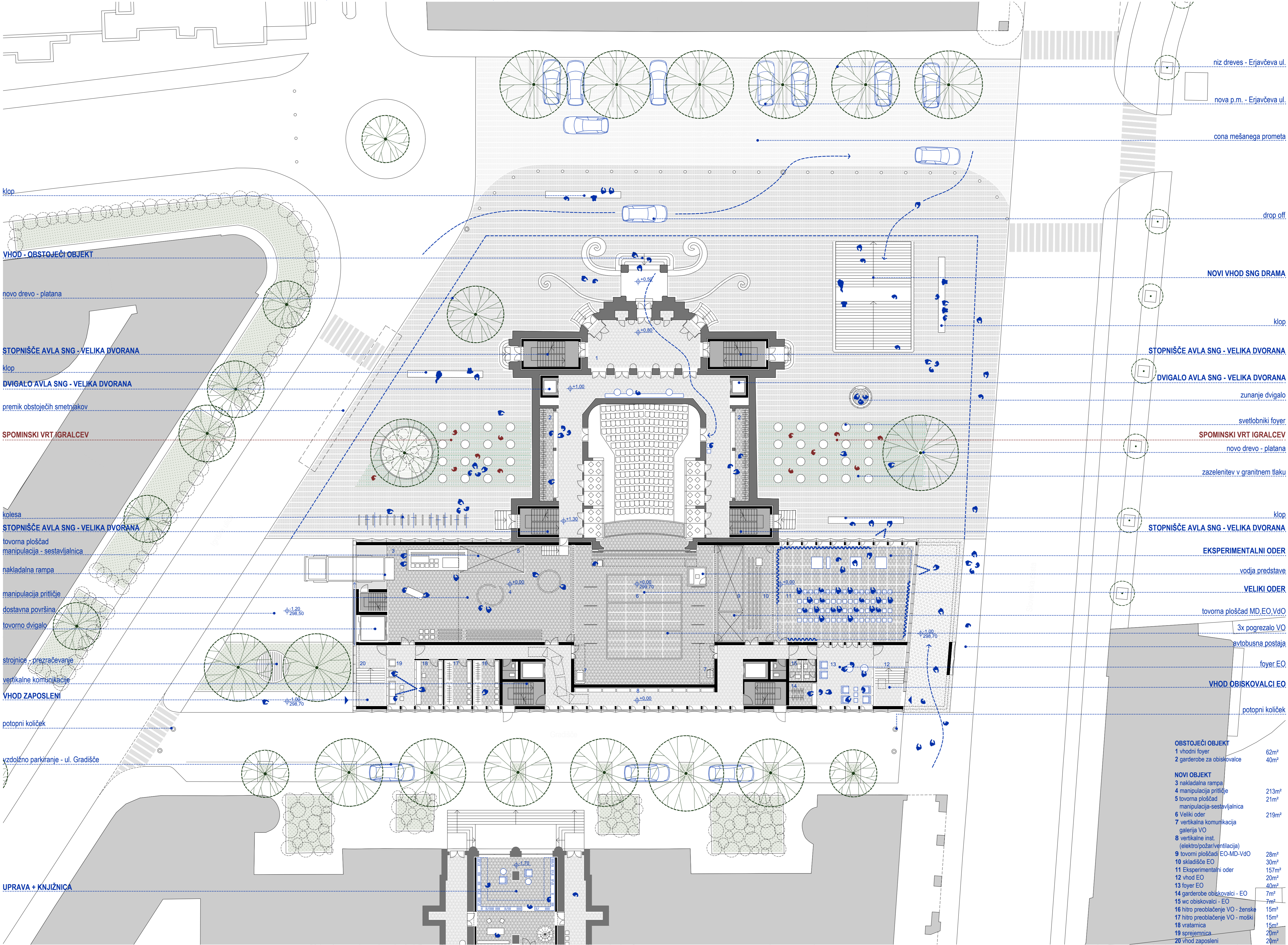


NOVI PRIZIDEK JE PRODUKCIJSKI »STROJ« IN OBENEM UMIRJENI, A VIZUALNO MOČEN »BACKGROUND« OBNOVLJENI HISTORIČNI STAVBI DRAME - SKUPAJ Z NOVIM FOYERJEM OMOGOČATA NOVO AKTIVNO ŽIVLJENJE GLEDALIŠČA.



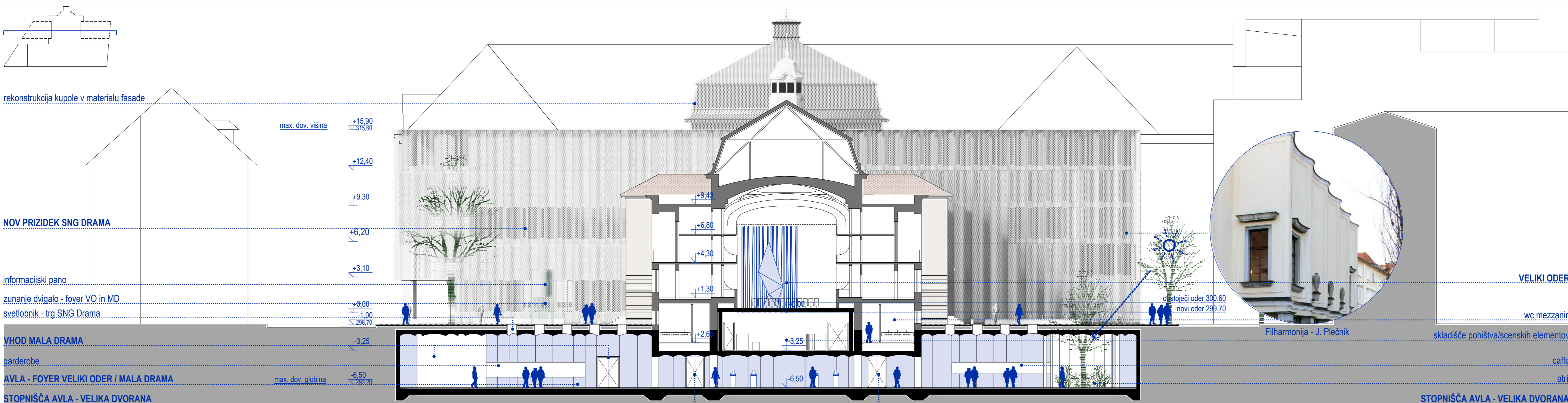
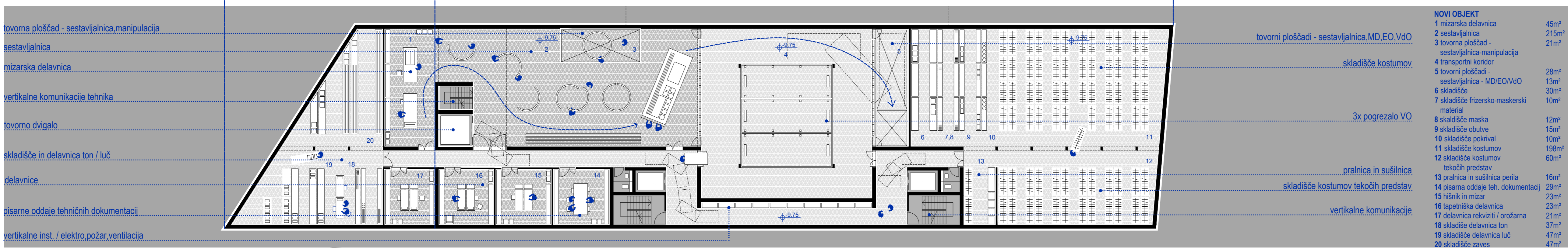
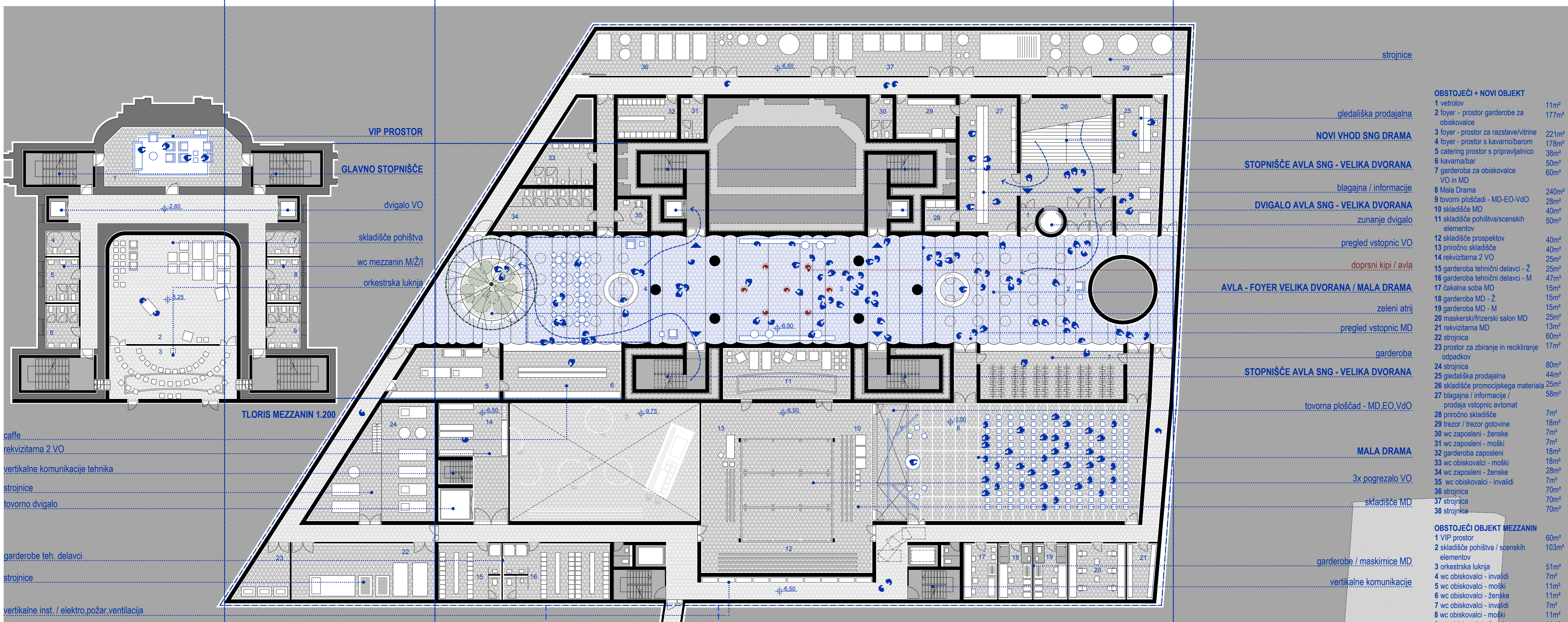
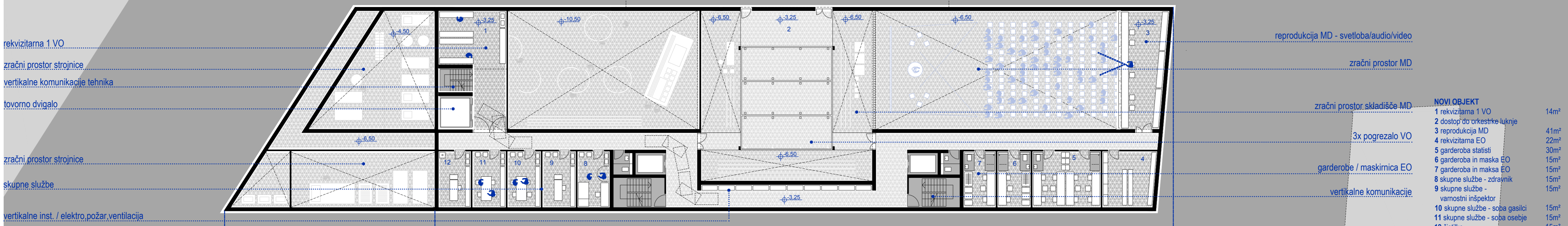


TRG SNG DRAME JE NOV VSTOPNI PROSTOR GLEDALIŠÇA, PEŠCEM NAMENJEN PARTER, KI OBJEKTU ZAGOTVI PRECIZNO IN ARTIKULIRANO VPETOST V MESTO - OBLIKOVAN JE KOT ENOTNA POVRŠINA Z NOVIM VHODOM V DRAMO.



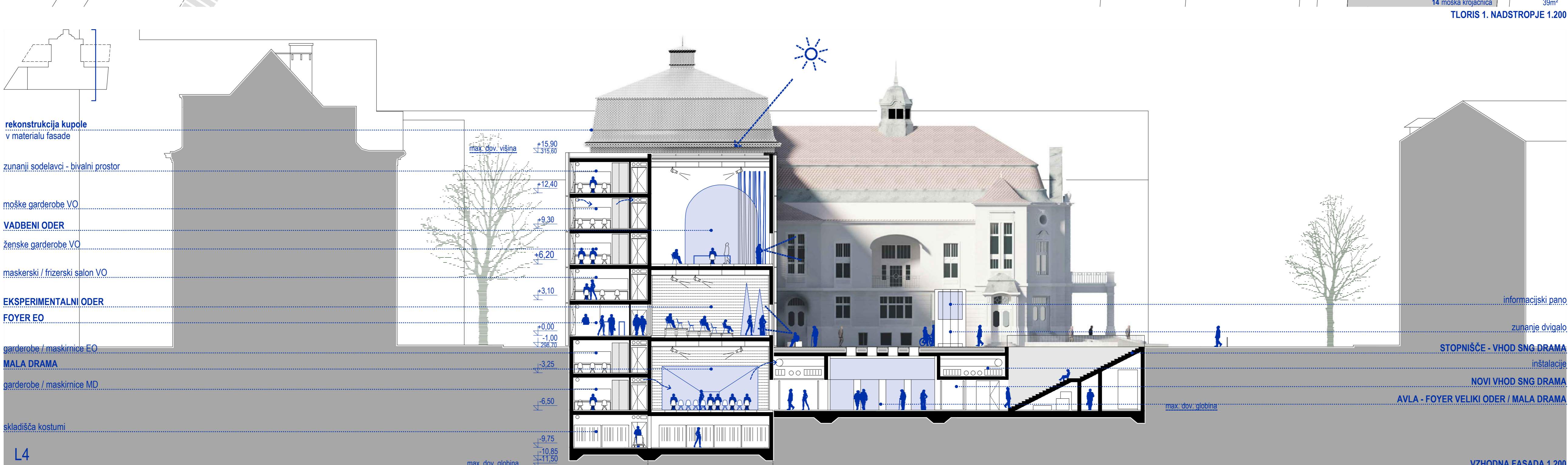
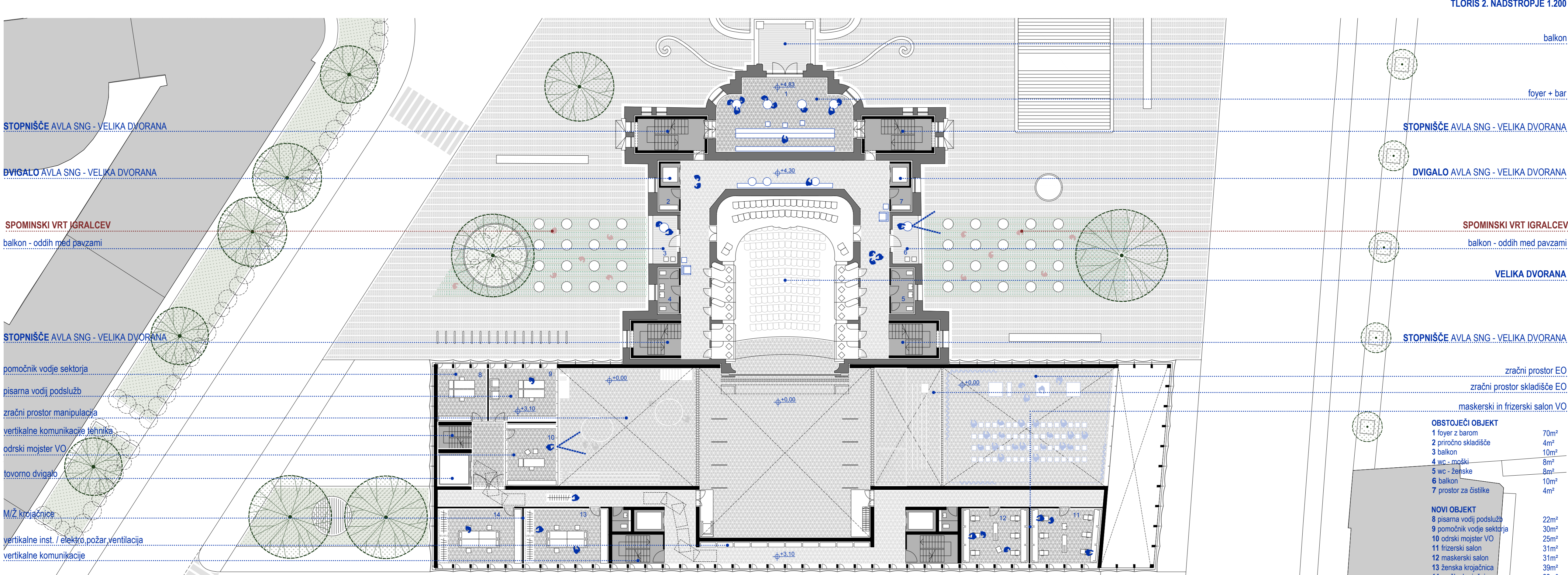
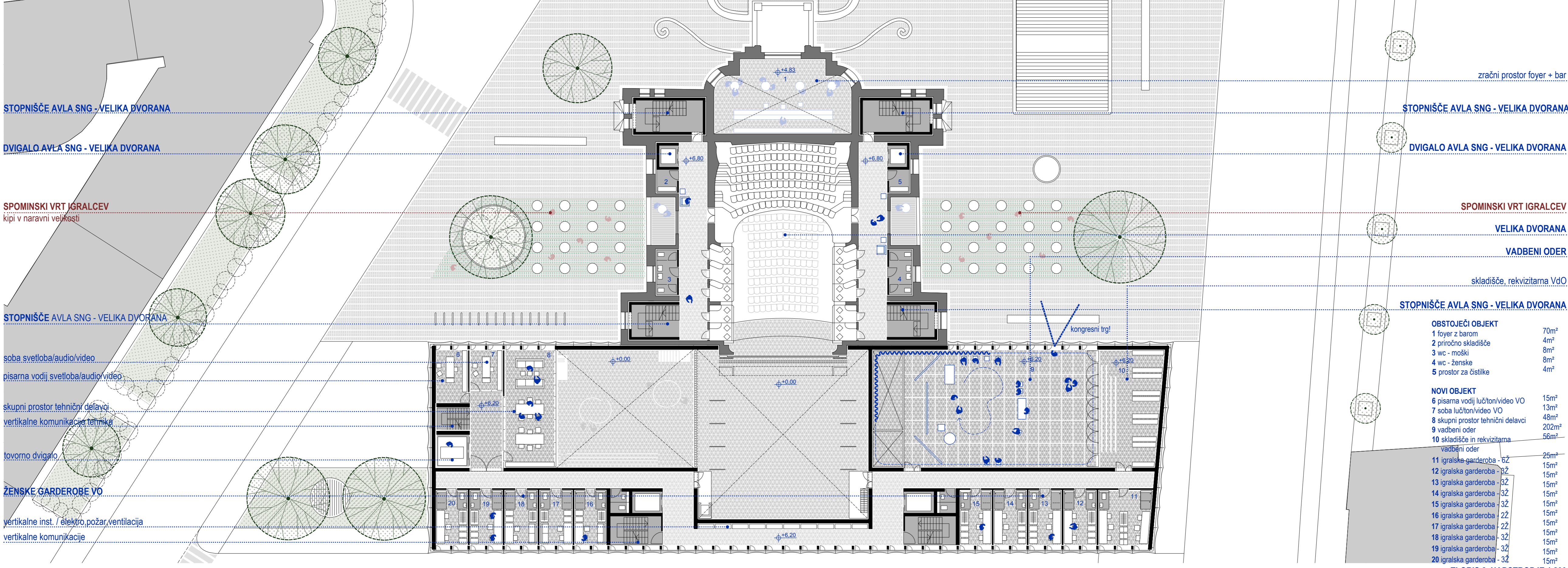


FOYER JE NOVI 'GALA' PROSTOR DRAME, ENOSTAVEN A SPEKTAKULAREN - GOSTI GLAVNE SPREMLJAJOČE PROGRAME - JE PROSTOR VSTOPA, ORIENTACIJE IN ODDIHA - EKSPRESIVNI KONTRAST ESTETIKE OBSTOJEČE STAVBE.



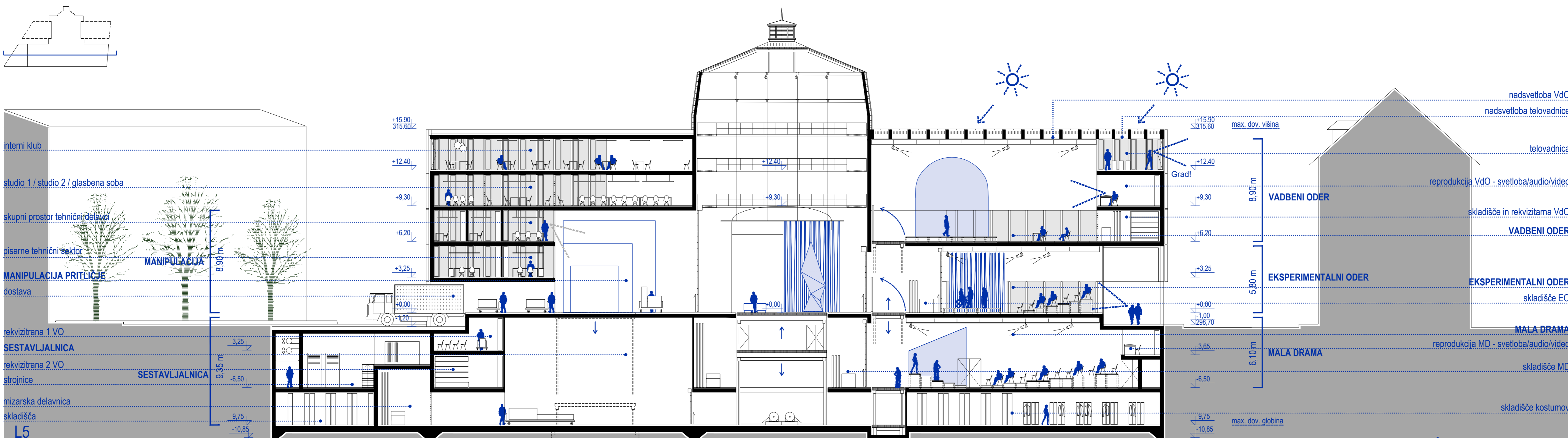
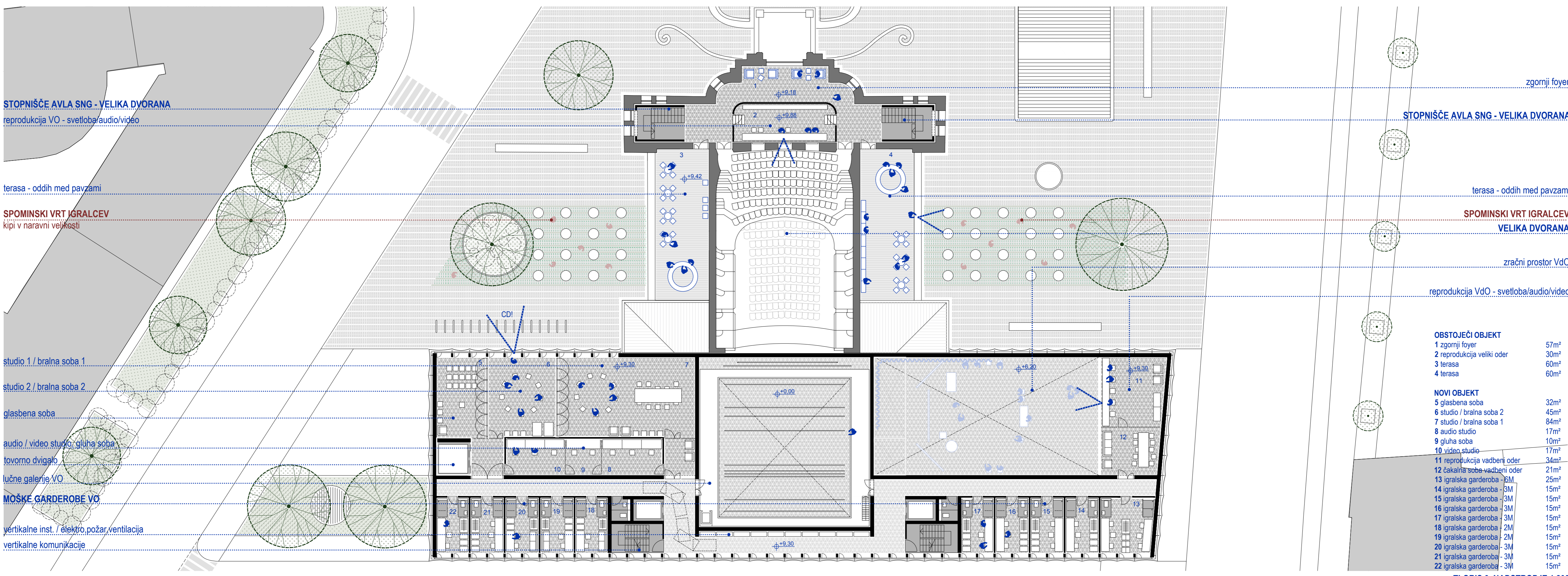
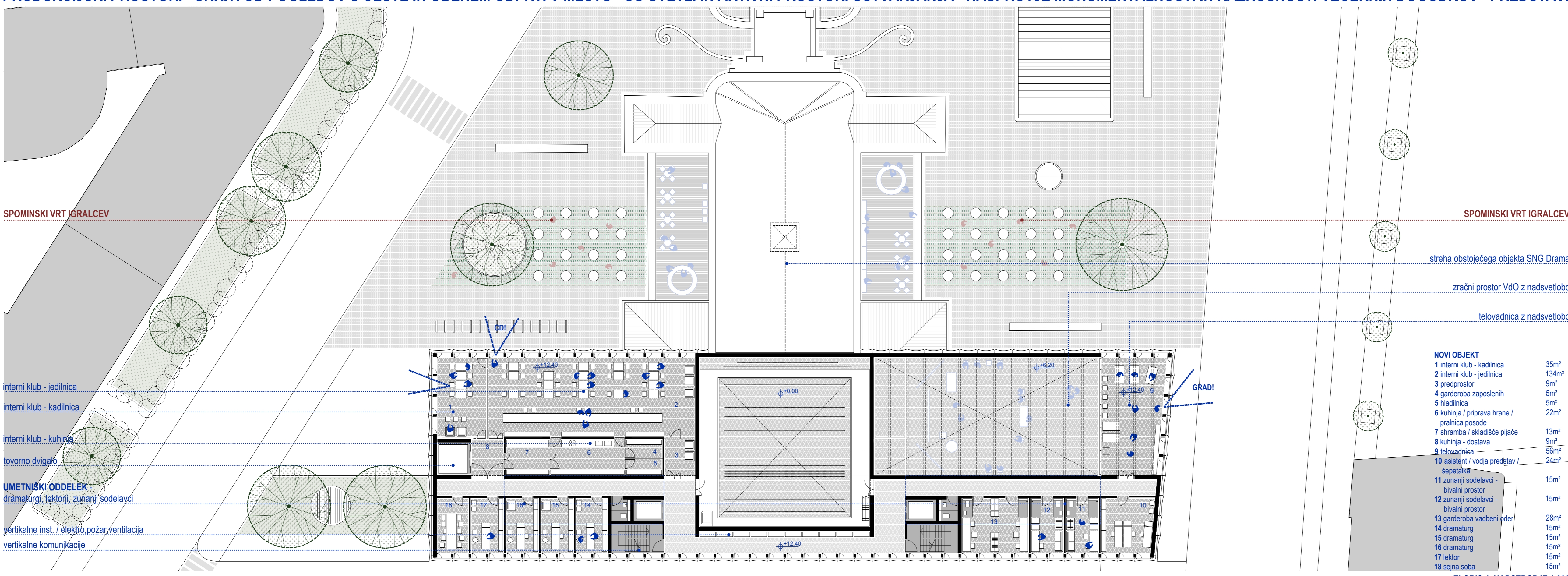


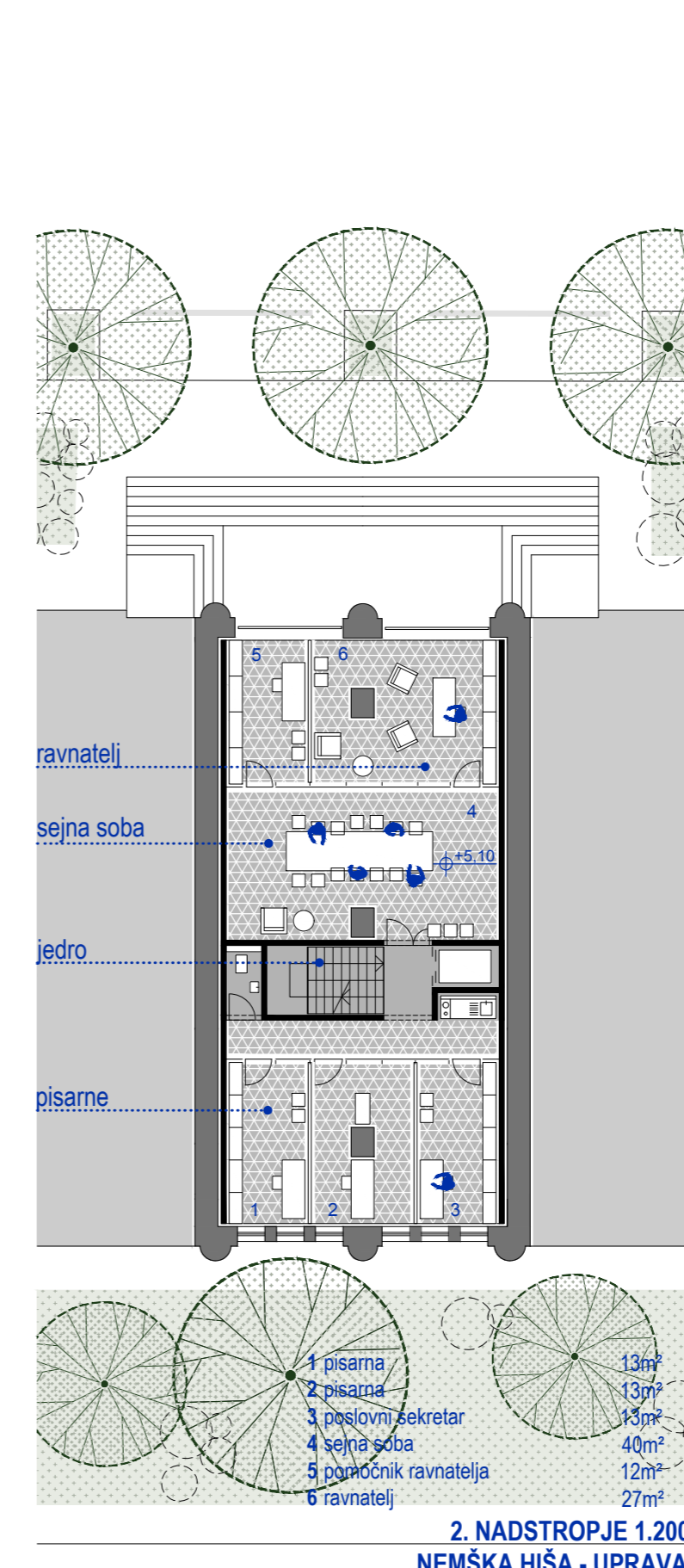
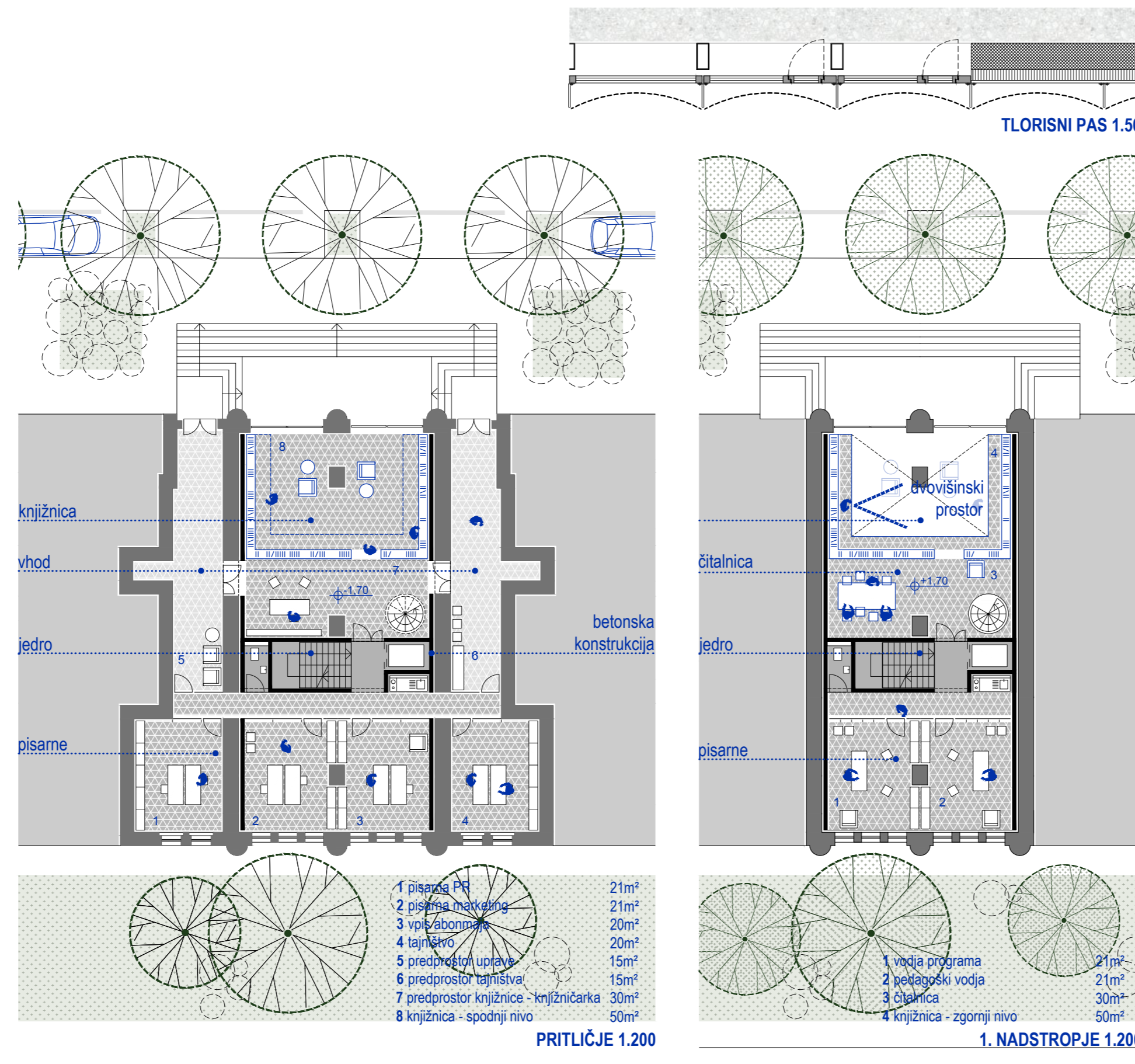
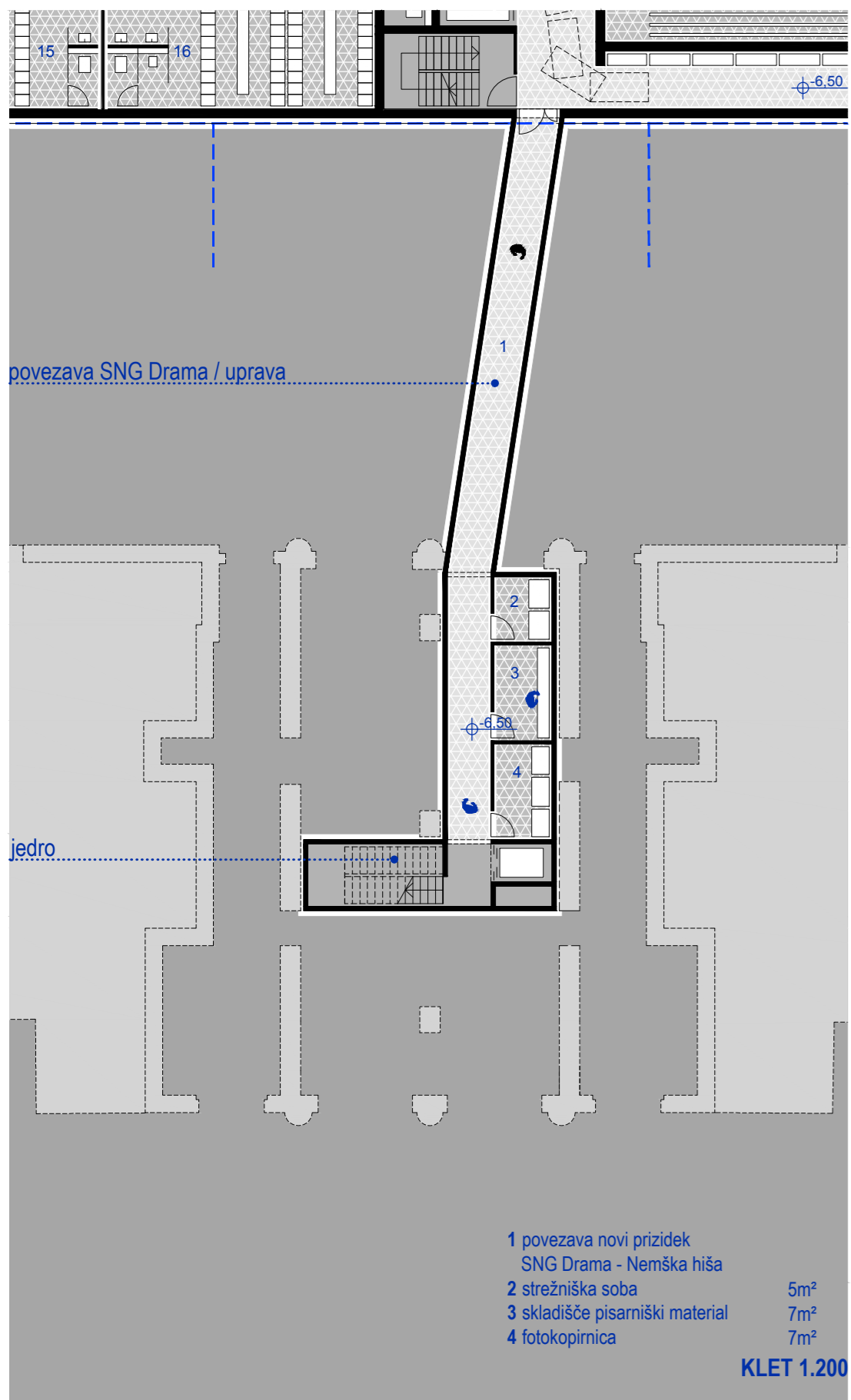
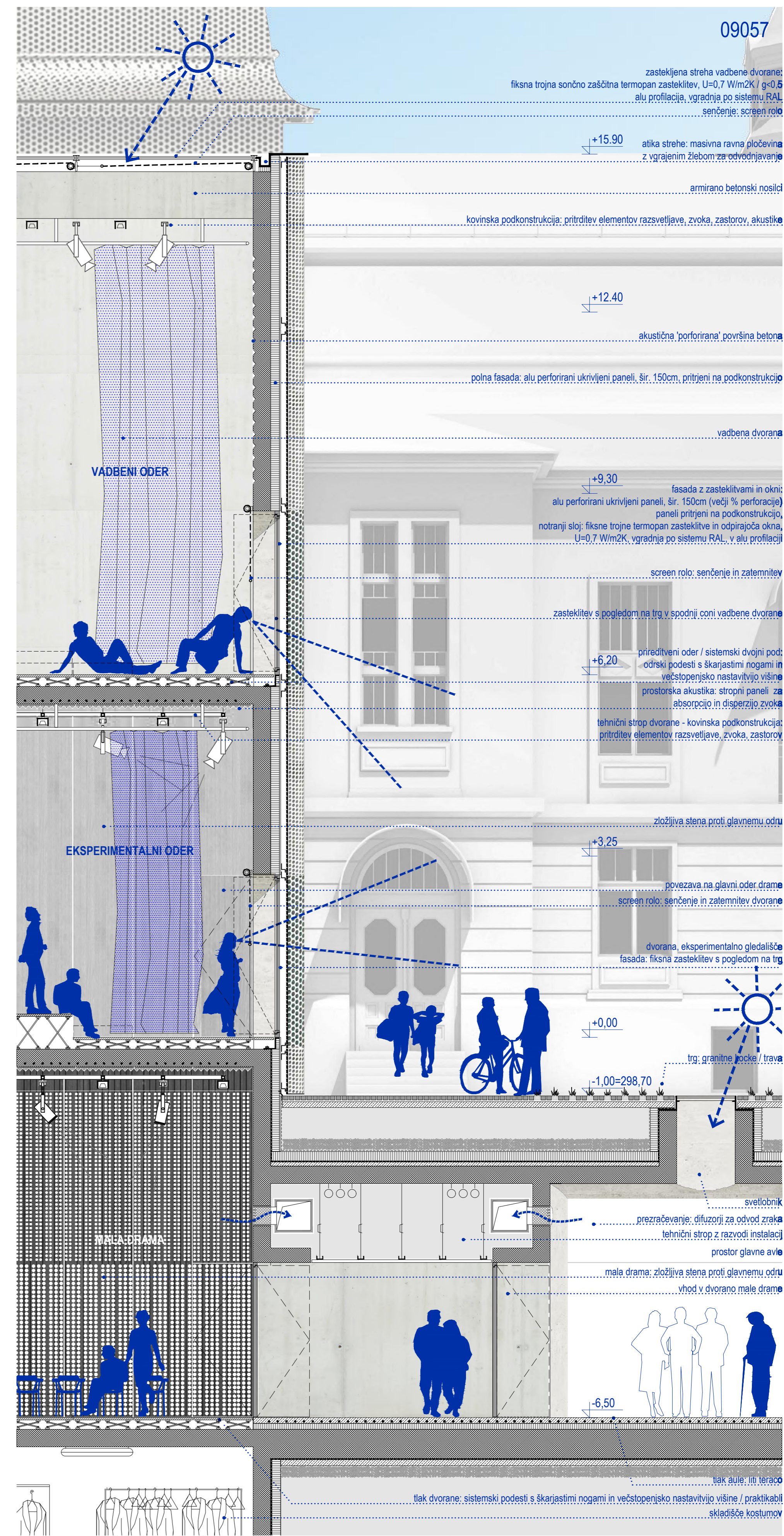
PERFORIRANA FASADA / ZAVESA POKRIVA NOVI PRODUKCIJSKI VOLUMEN - SKRIVA IN RAZKRIVA DNEVNO ŽIVLJENJE NOTRANJOSTI, JO FIZIČNO IN MENTALNO POVEZUJE Z MESTOM TER USTVARJA DIALOG S STARO HIŠO.





PRODUKCIJSKI PROSTORI - SKRITI OD POGLEDV S CESTE IN OBENEM ODPRTI V MESTO - SO SVETLI IN AKTIVNI PROSTORI USTVARJANJA - NASPROTJE MONUMENTALNOSTI IN RAZKOŠNOSTI VEČERNIH DOGODKOV - PREDSTAV.





MATERIALNA ARTIKULACIJA PRODUKCIJSKEGA OBJEKTA - UPOGNJENI IN PERFORIRANI KOVINSKI PANELI POENOTIJO PODOBO CELOTE IN JO OBENEM PREDSTAVIJO MESTU KOT PRECIZNO, A DIVERZIFICIRANO TANČICO.

