

SITUACIJA UN-K9



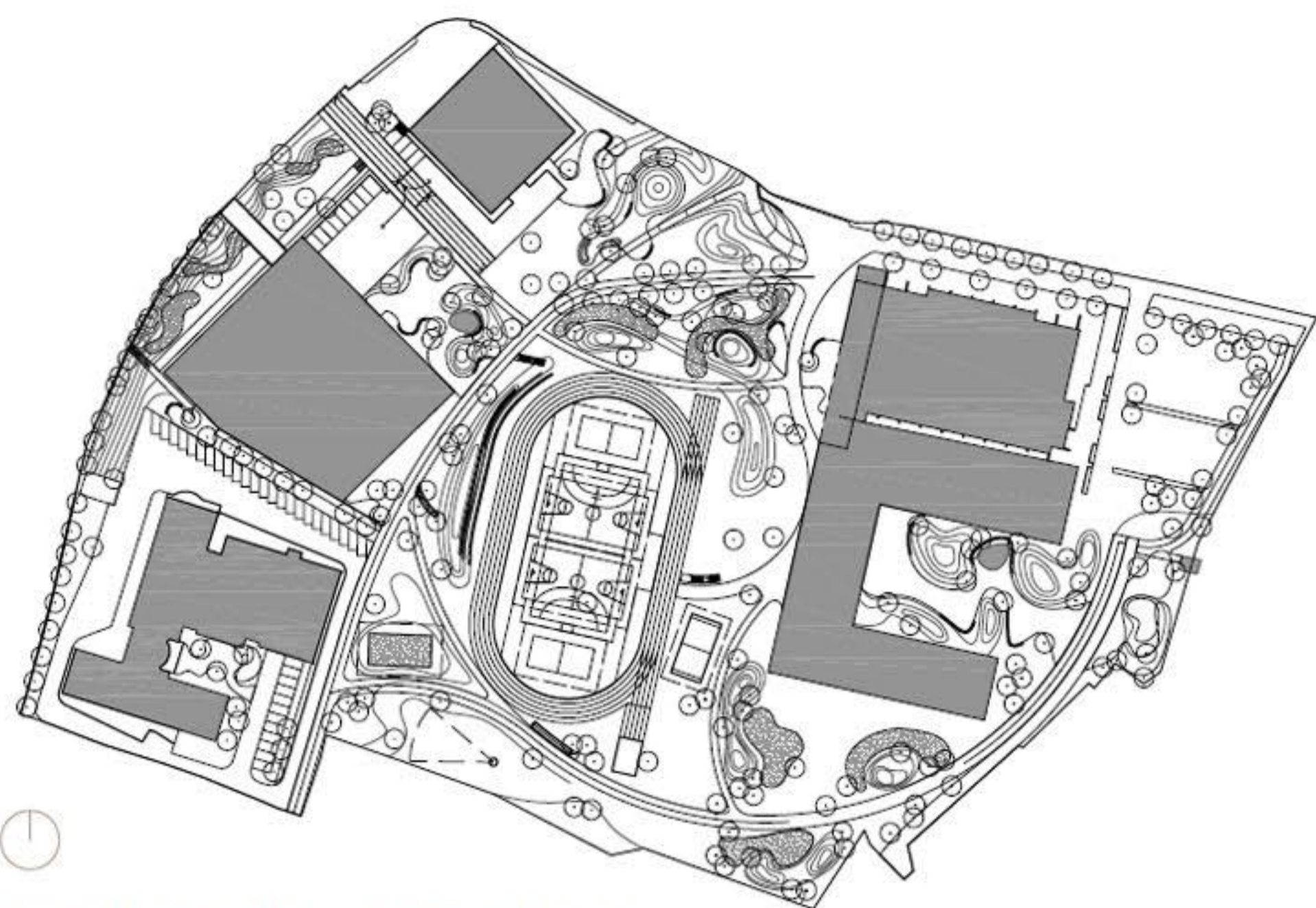
OŠ FRAN ALBREHT = ZASLON



NEUREJENO ZEMLJIŠČE



DEGRADIRANO OBMOČJE



SITUACIJA M 1:1000

1. FAZA

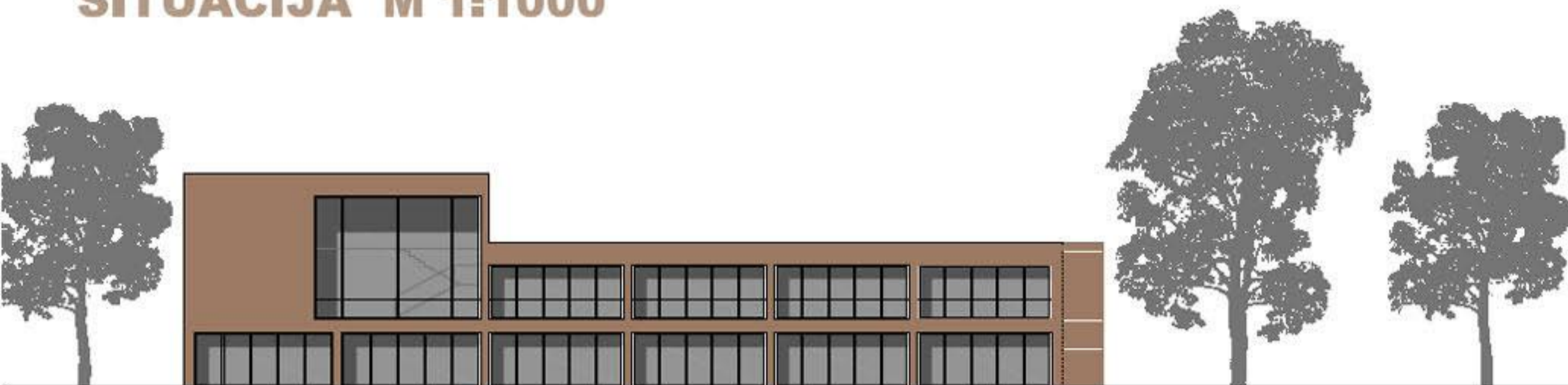


POSTAVITEV NOVE ŠOLE V PRVI FAZI

2. FAZA

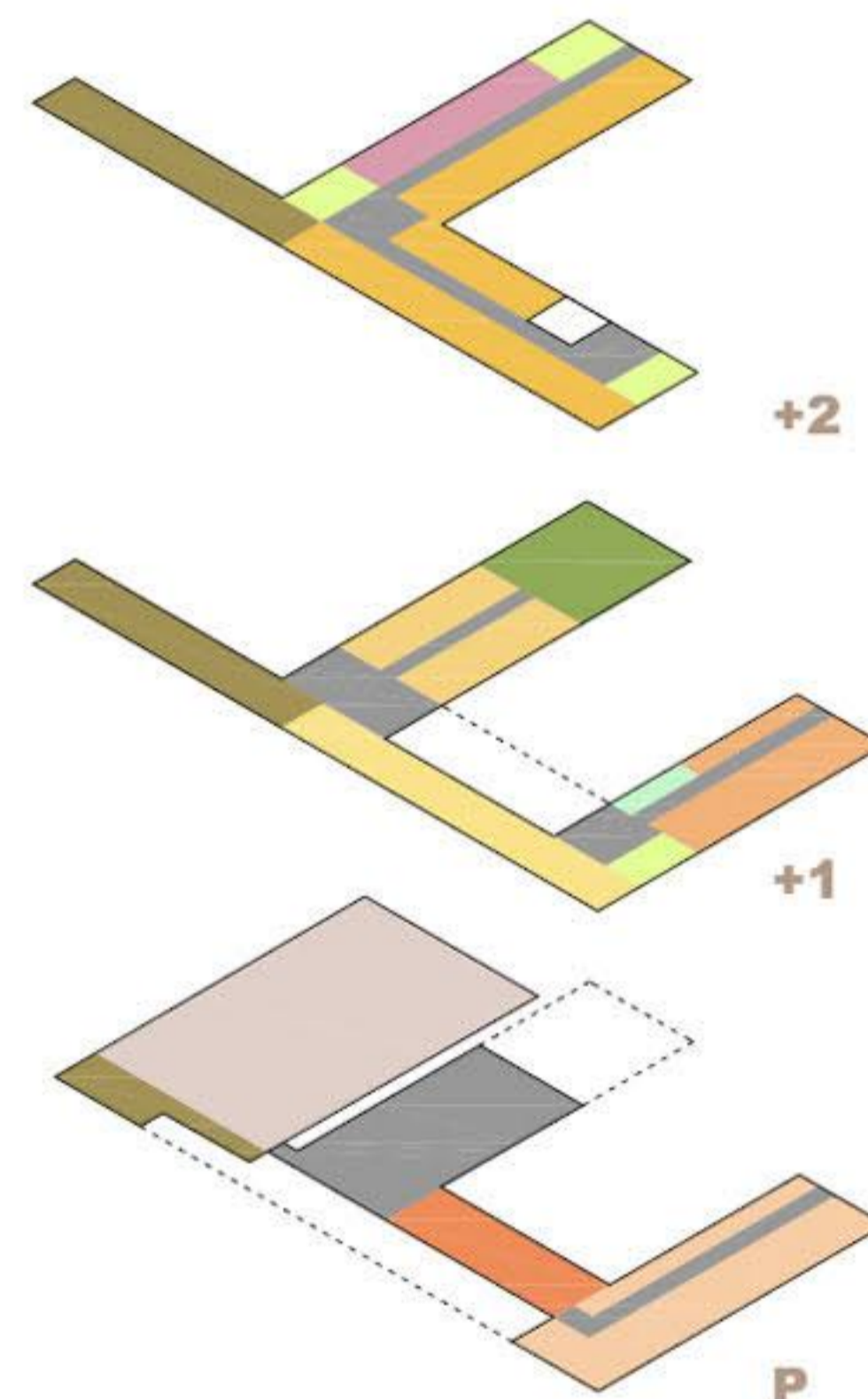


PODALJŠANJE LAMELE PO PORUŠITVI OBSTOJEČE ŠOLE, MOŽNOST NAMESTITVE DODATNIH ŠOLSkih ALI DRUGIH MESTNIH PROGRAMOV (MLEČNA RESTAVRACIJA, KULTURNE DEJAVNOSTI,...)

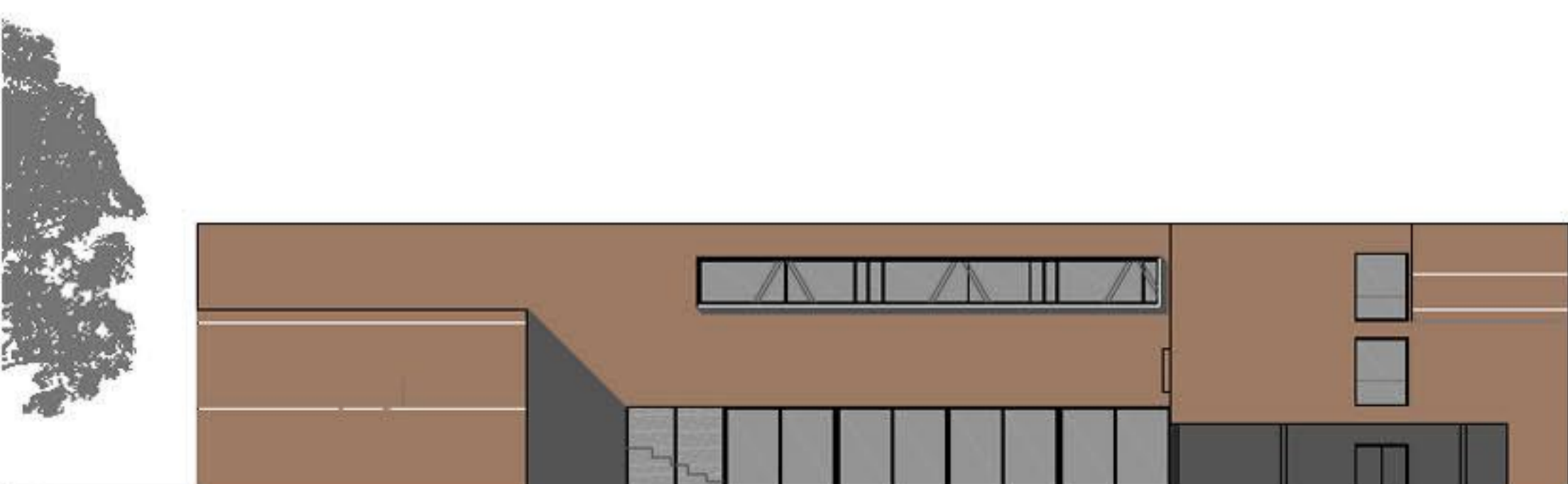


J FASADA

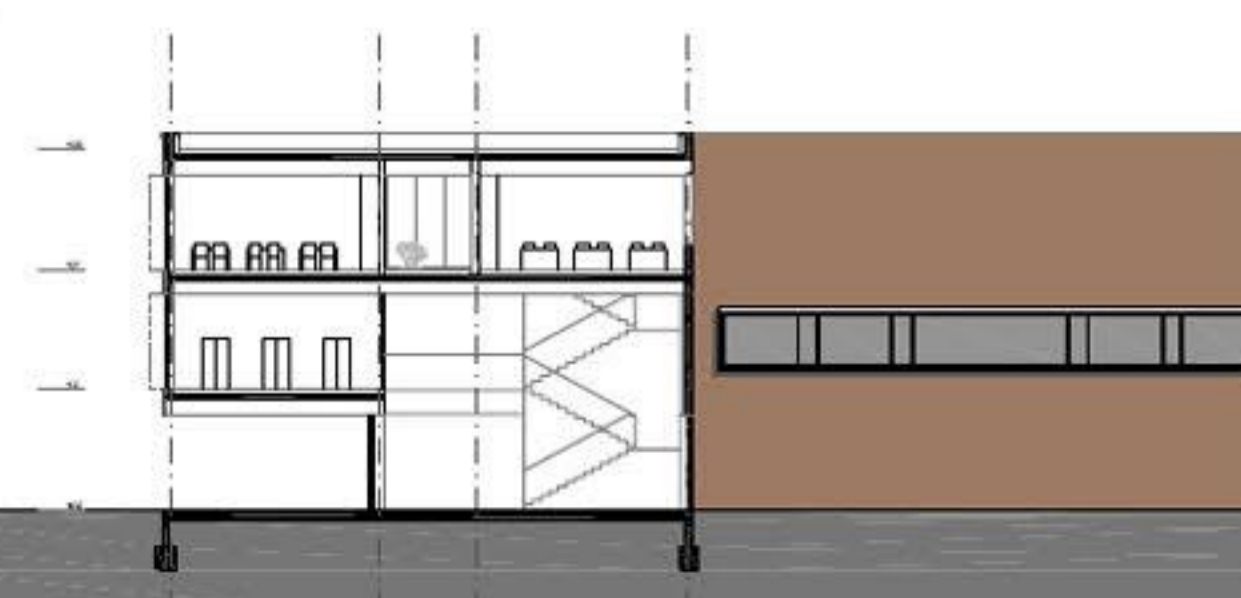
PROGRAMSKA SHEMA



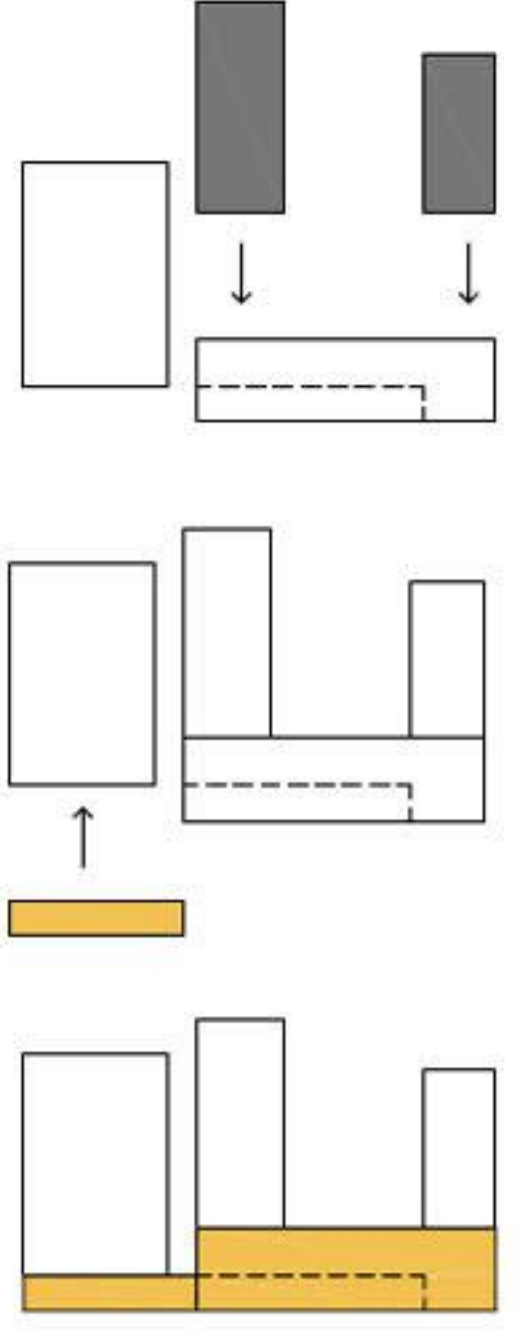
- | | | |
|---------------------|--------------------|--------------|
| 1. TRIDA | NARAVOVLJIVE | LIKOVNI POUK |
| 2. TRIDA | UPRAVA | TERASE |
| VEČNAMENSKI PROSTOR | BRICJALNI POUK | SERVISI |
| TELOVALDNICA | PREDMETNE UČILNICE | KOMBINACIJE |
| | | KUHINICA |
| | | 2. FAZA |



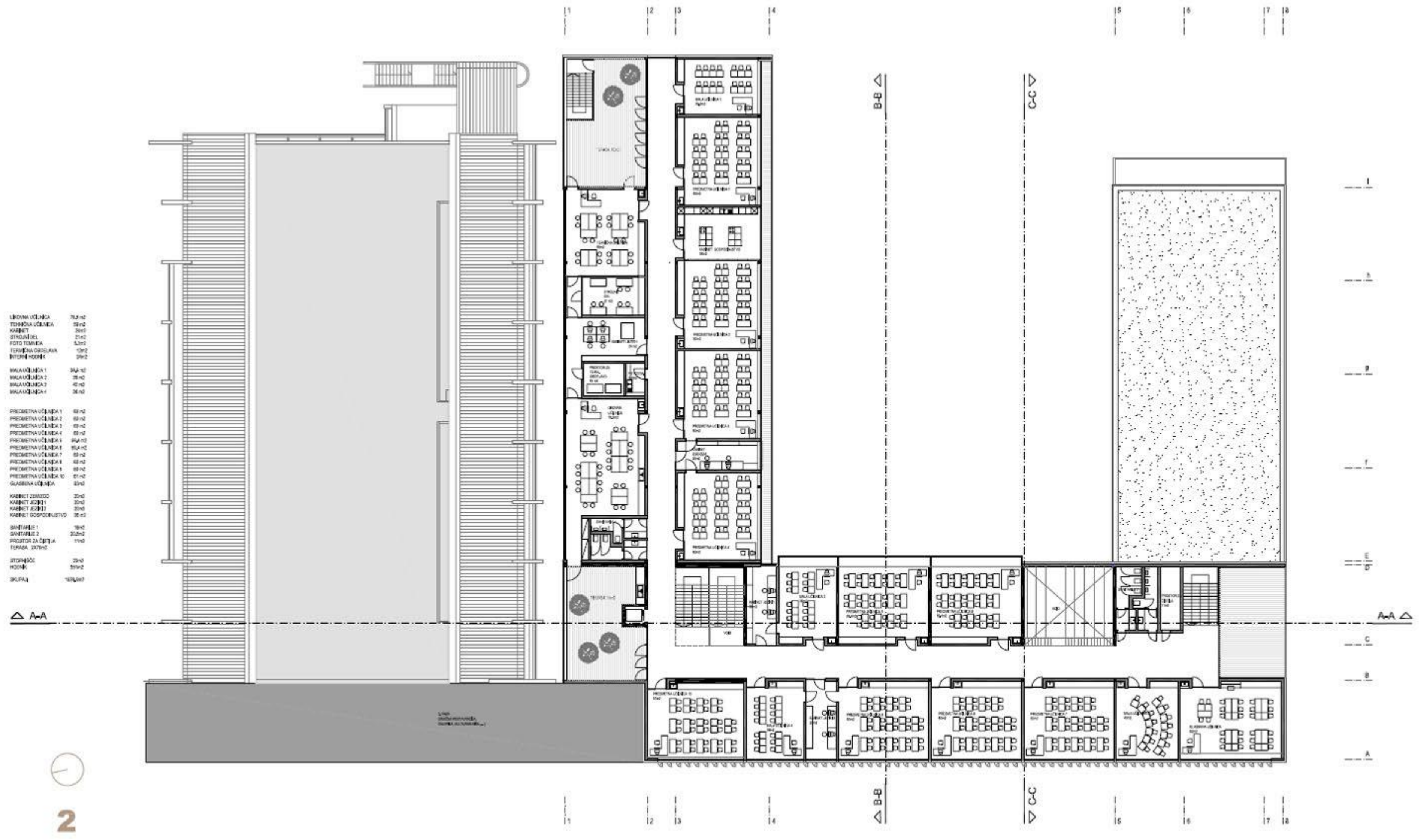
V FASADA



C - C



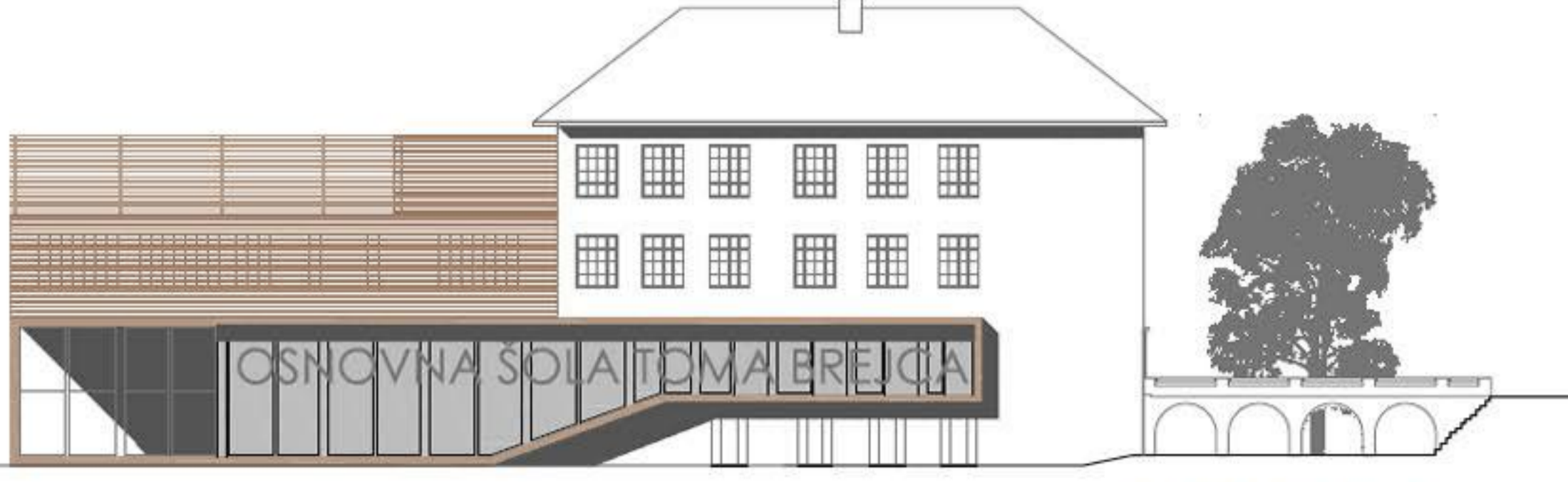
VEČNAMENSKO ZAKLONIŠČE



2

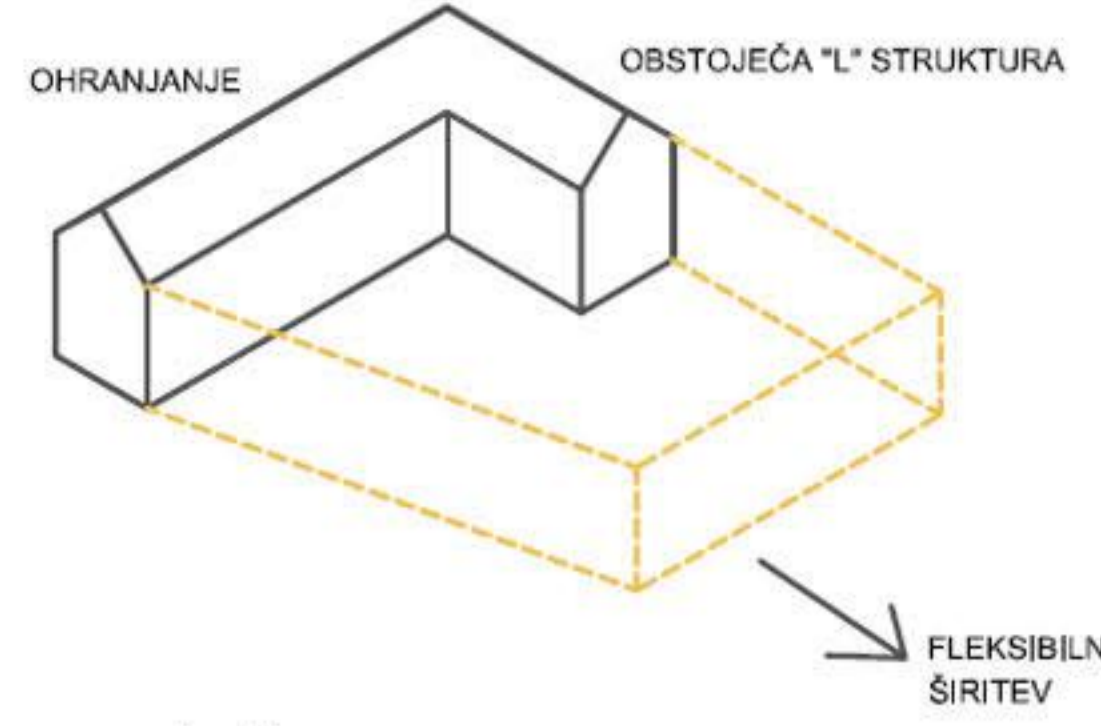


D - D

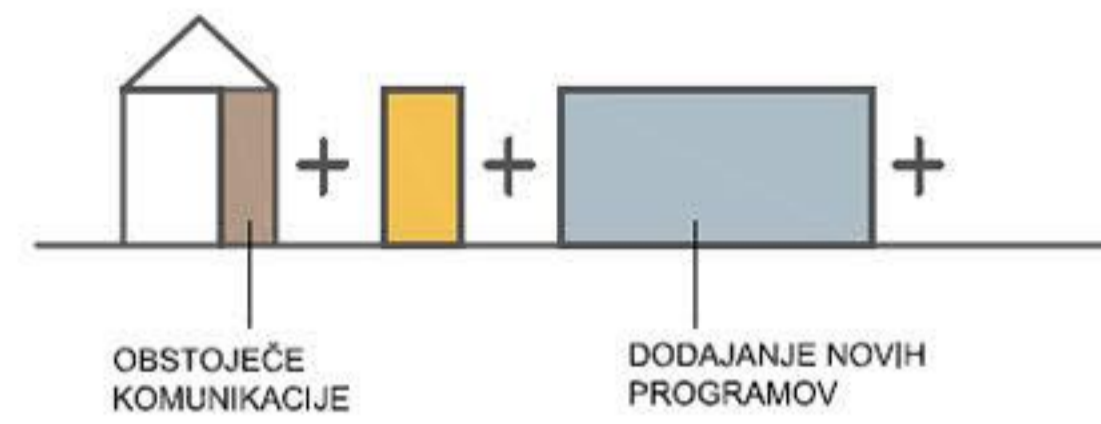


S FASADA

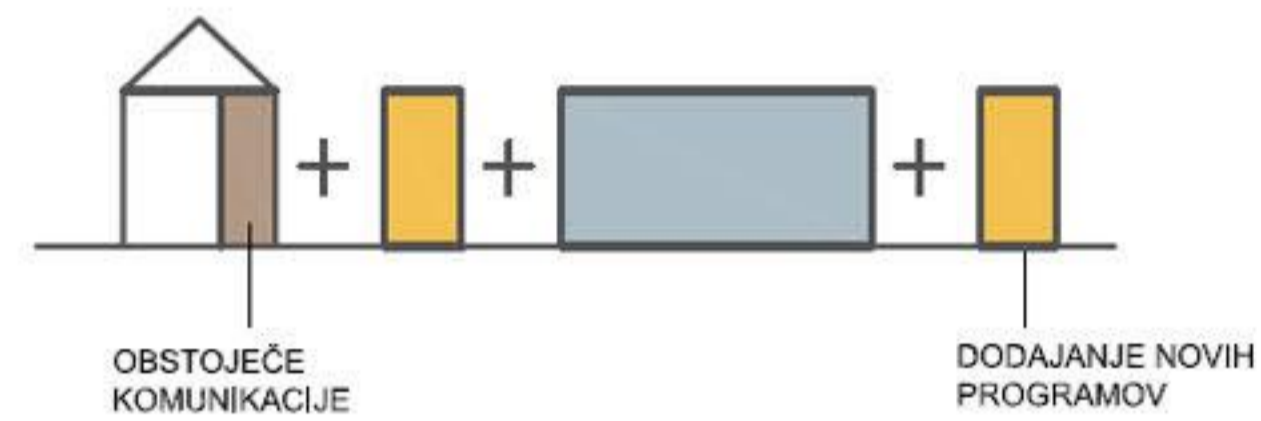
ŠOLA = REPREZENTANČNA STAVBA = KOMPAKTNI VOLUMEN



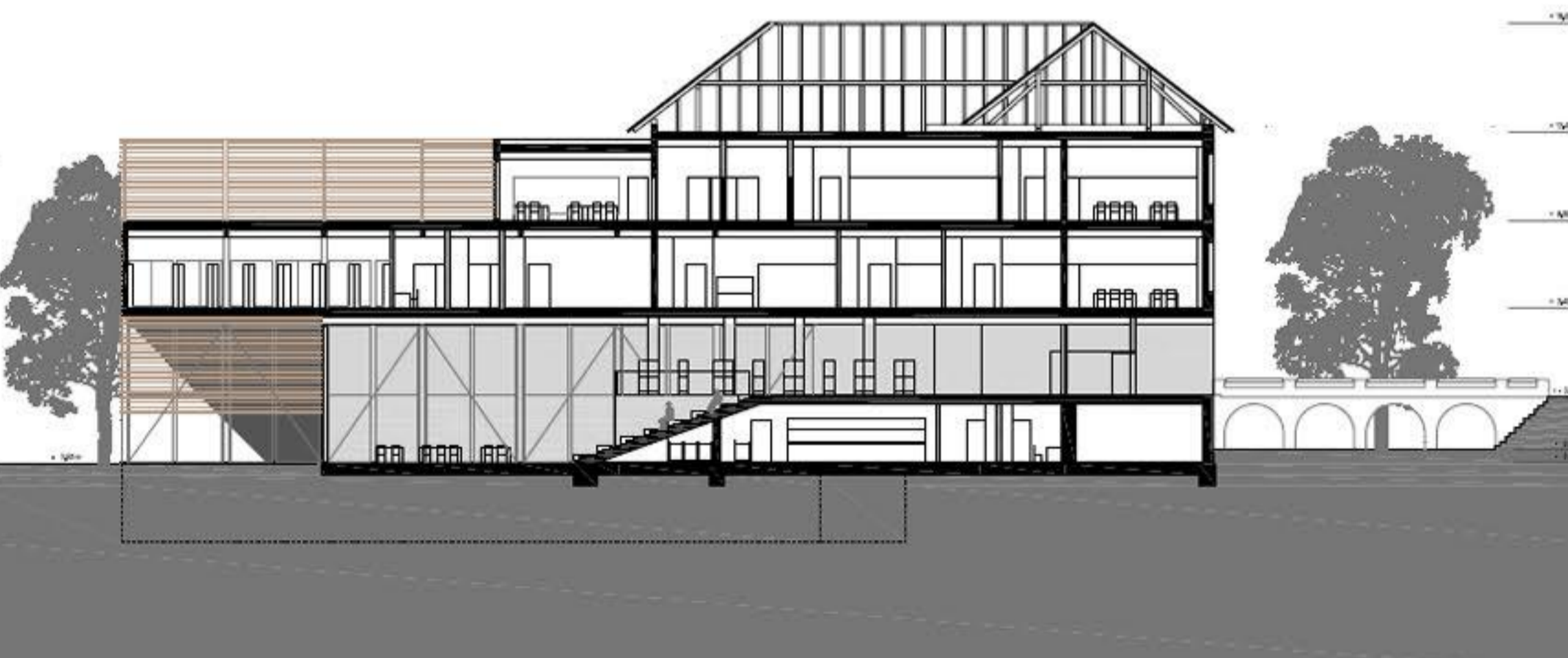
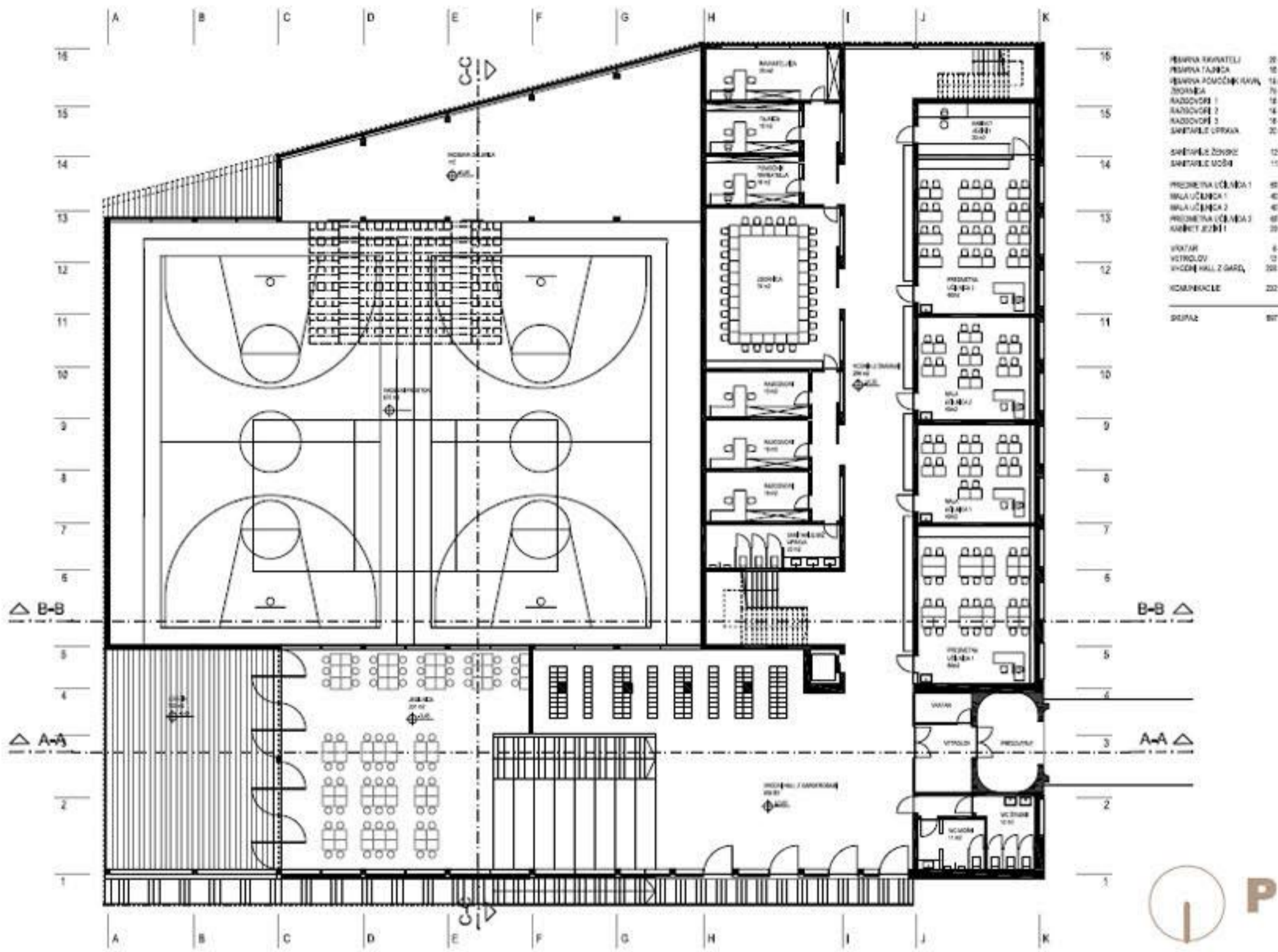
18 ODELEČNA ŠOLA



24 ODELEČNA ŠOLA



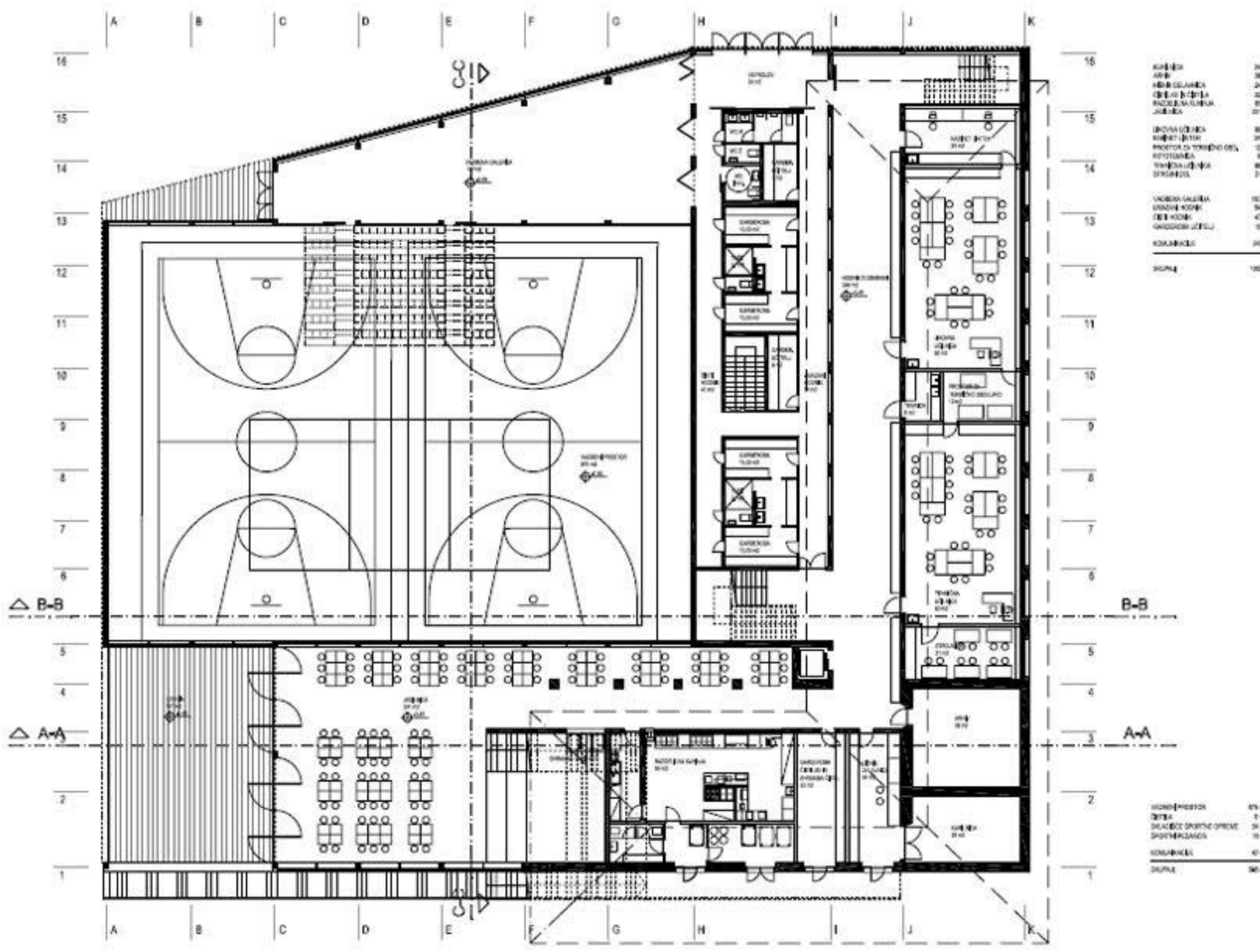
KOMPAKTNOST SE OHRANJA



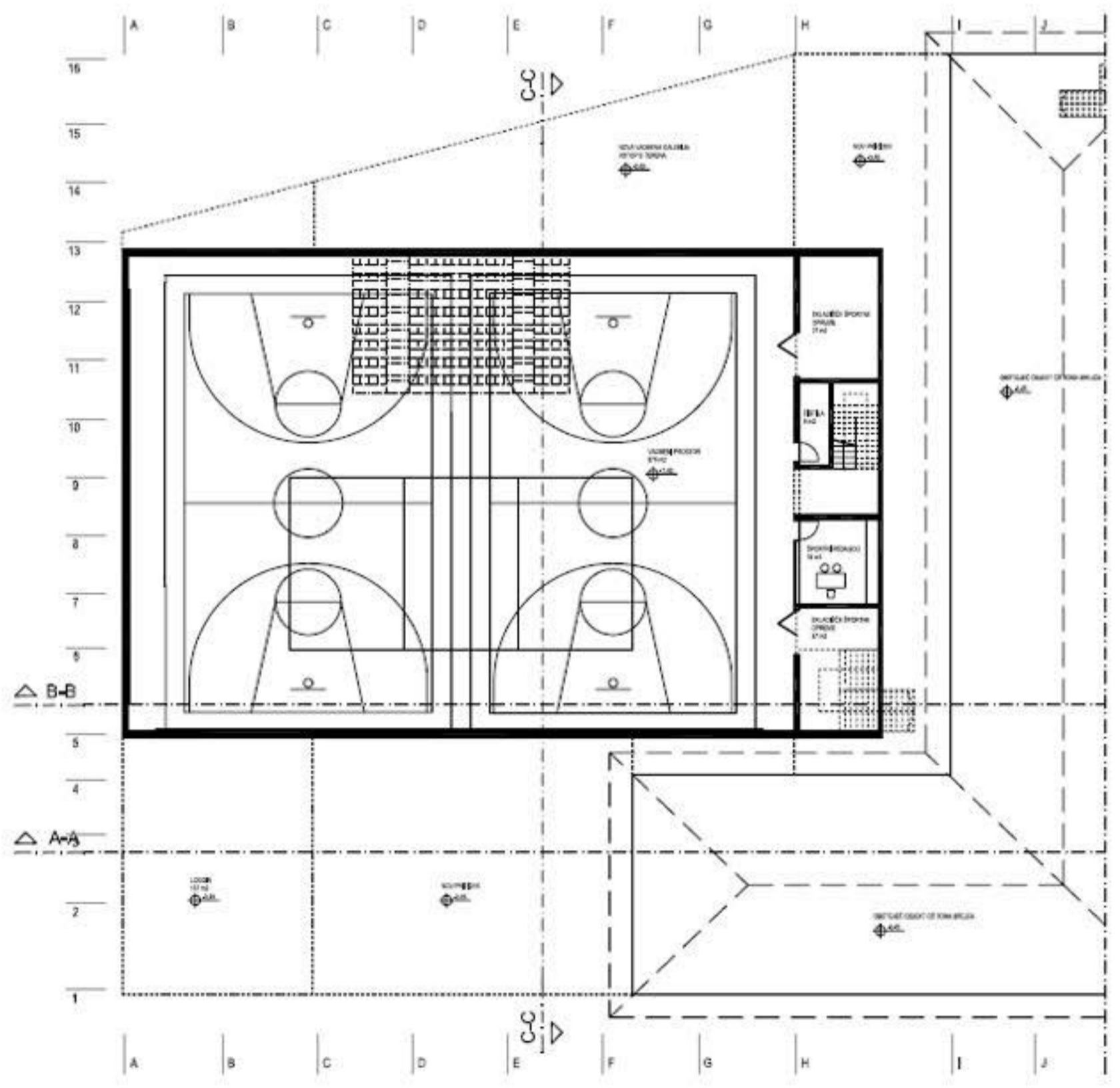
A-A



VHODNA AVLA



-1



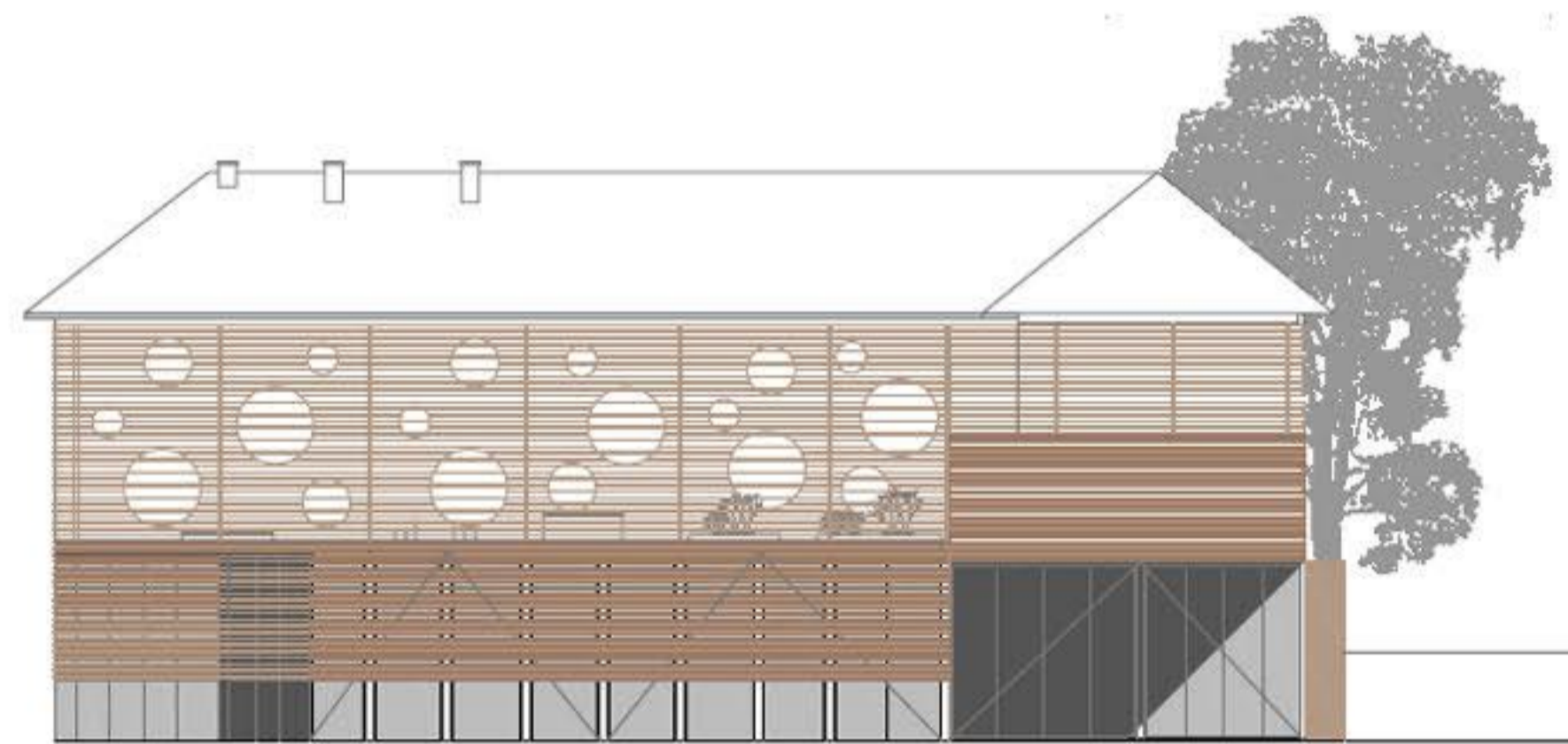
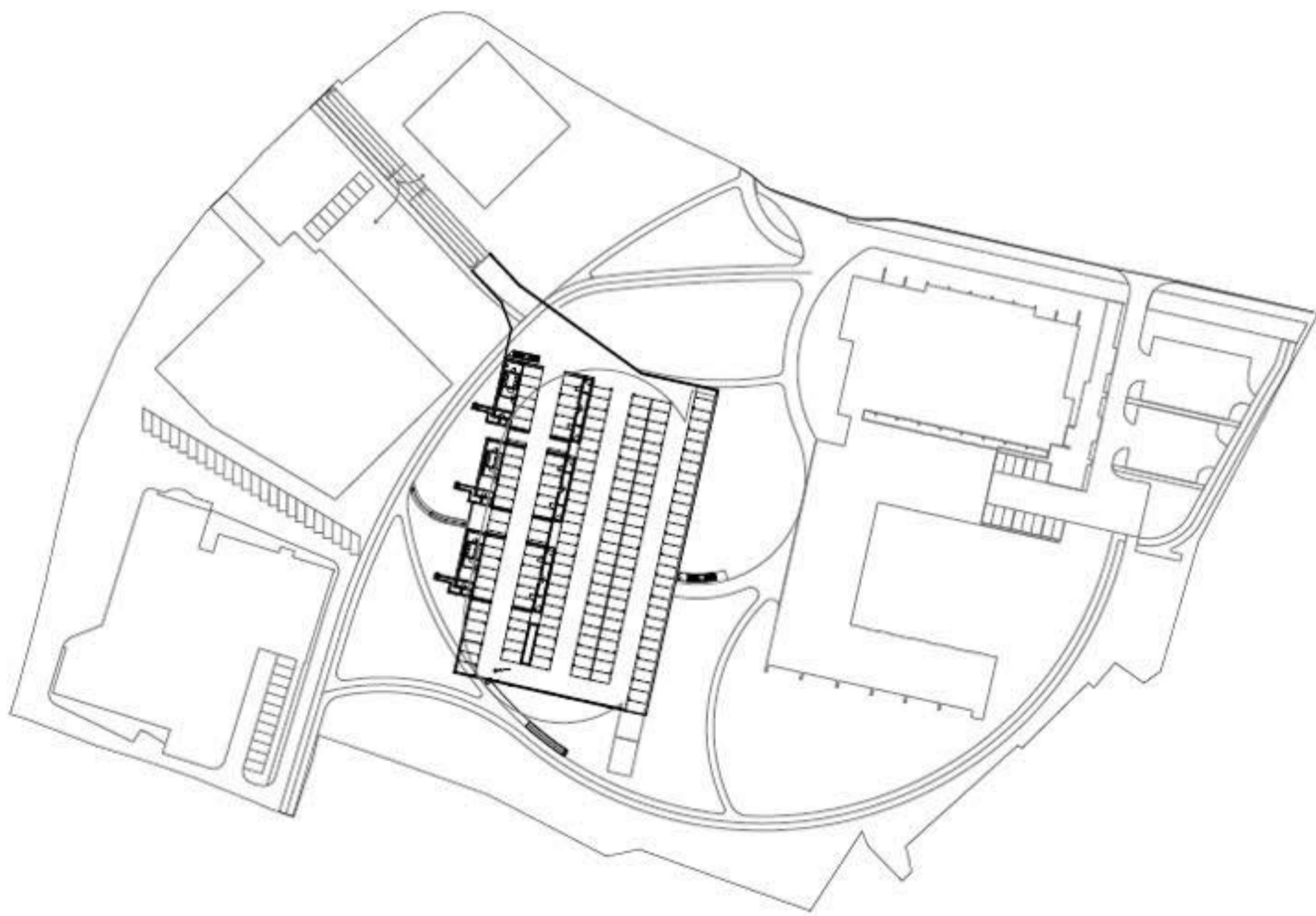
-2



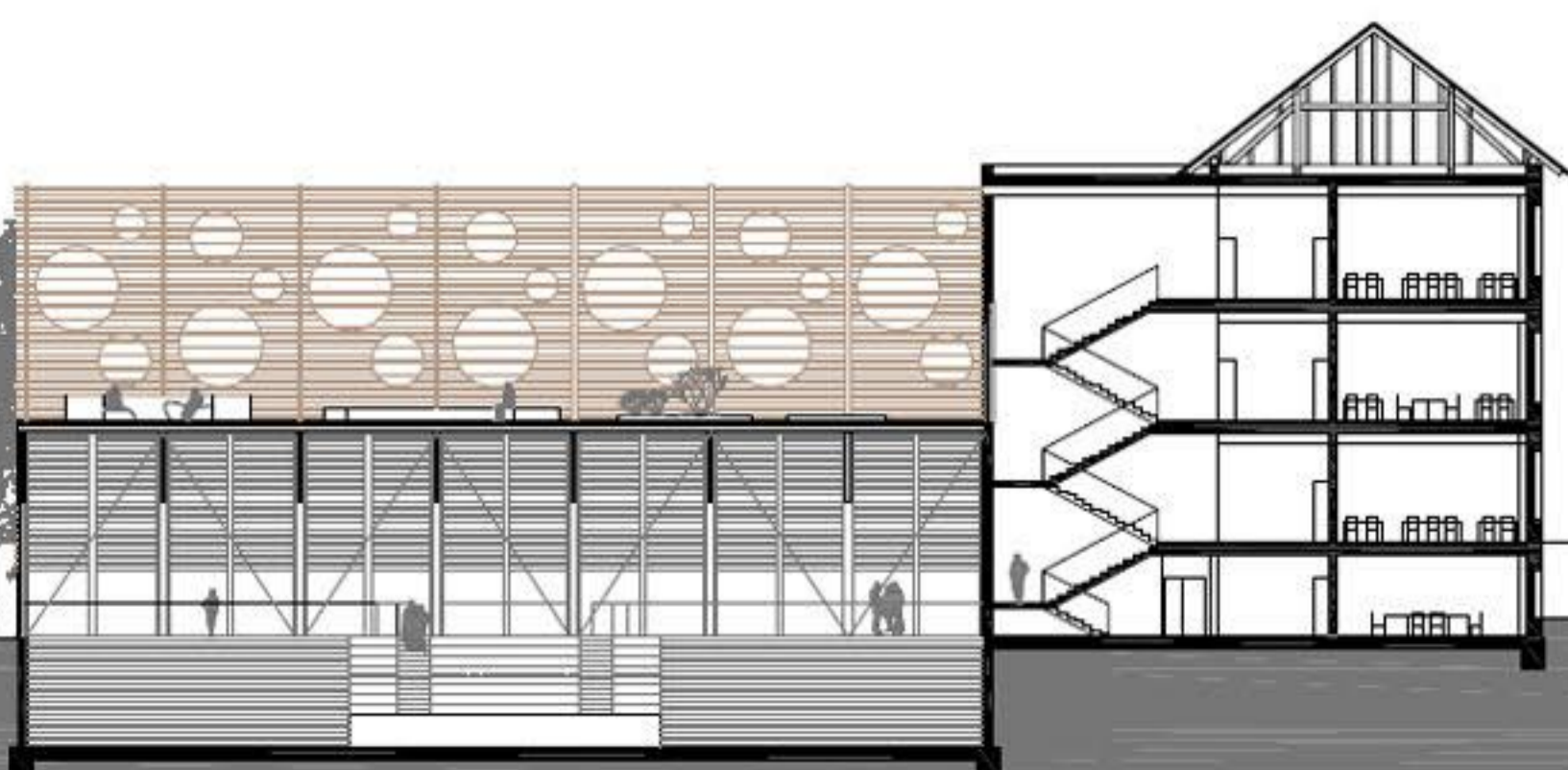
ŠOLSKO DVORIŠČE

SITUACIJA M 1:1000

OSNOVNA ŠOLA TOMA BREJCA



V FASADA



B-B



C-C

