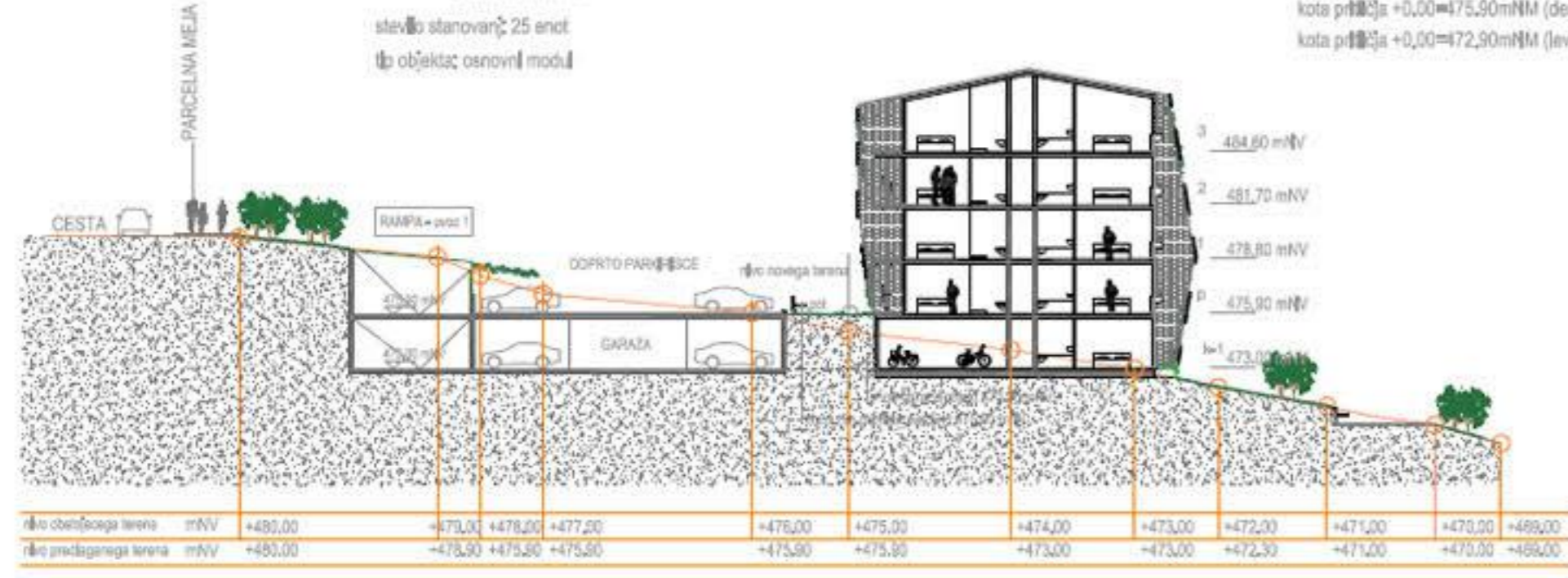


etaznost: levi del 1K+P+3
desni del 1K+P+3
število stanovanj: 25 enot
tip objekta: osnovni modul

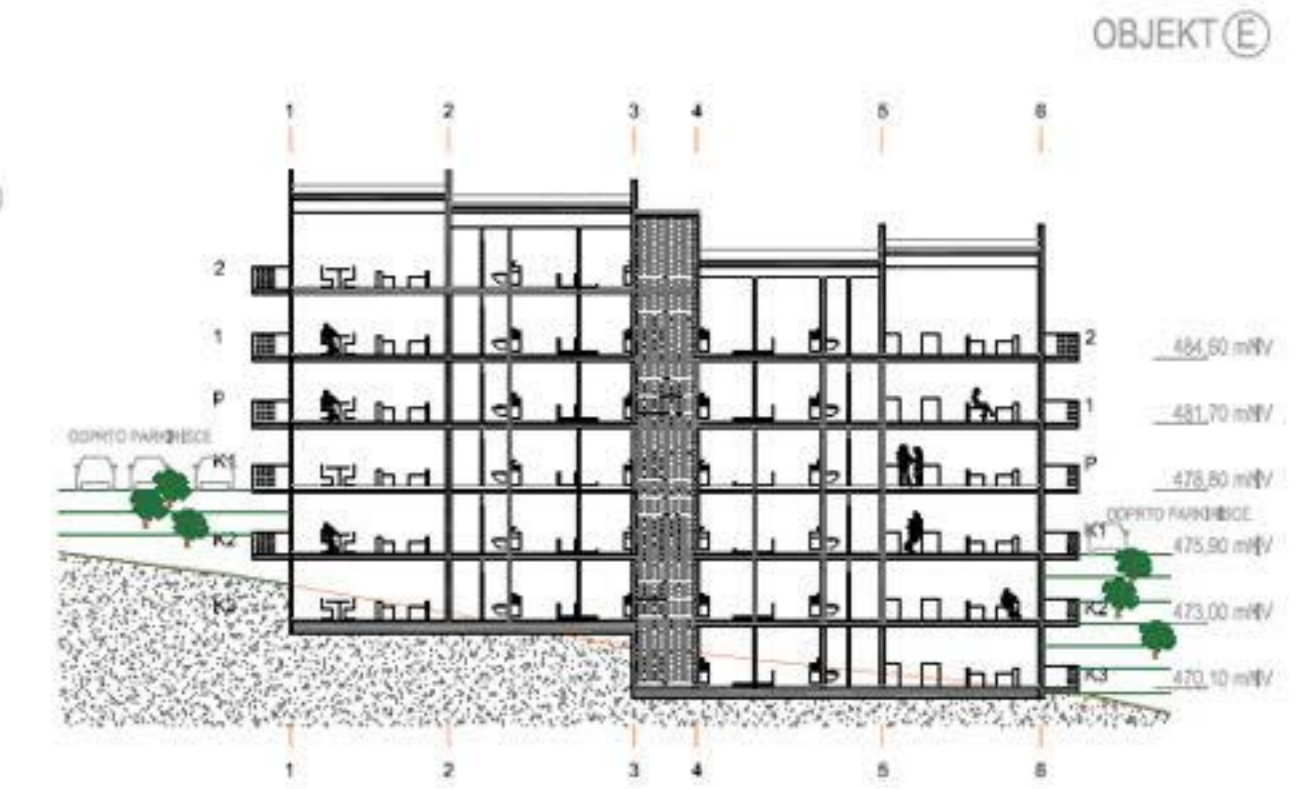
OBJEKT A

kota priključja +0,00=475,90mNM (desni del / vhod v objekt)
kota priključja +0,00=472,90mNM (levi del)



OBJEKT B

kota priključja +0,00=473,00mNM (desni del)
kota priključja +0,00=470,10mNM (levi del/vhod v objekt)
etaznost: levi del 2K+P+3
desni del 2K+P+3
število stanovanj: 27 enot
tip objekta: zračni modul

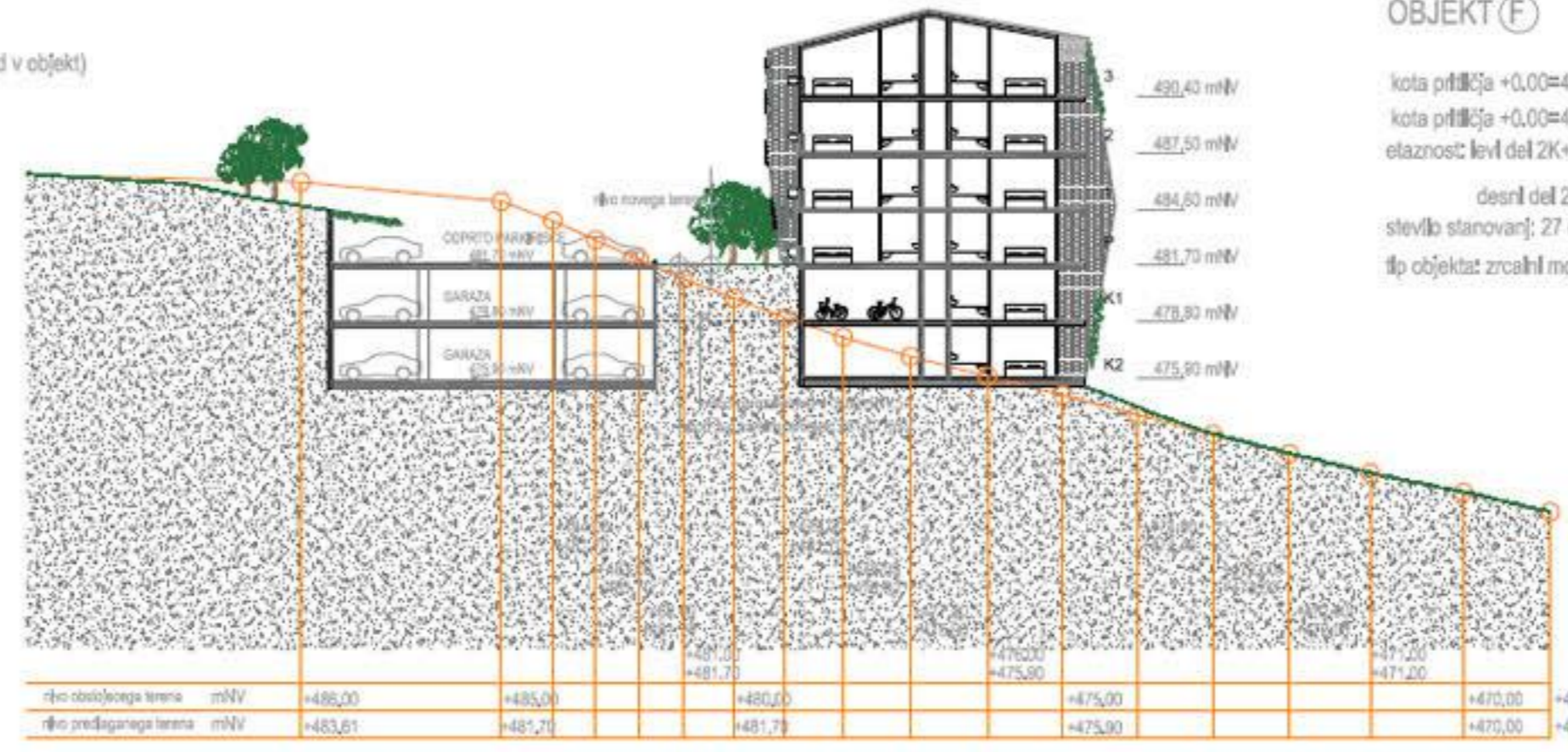
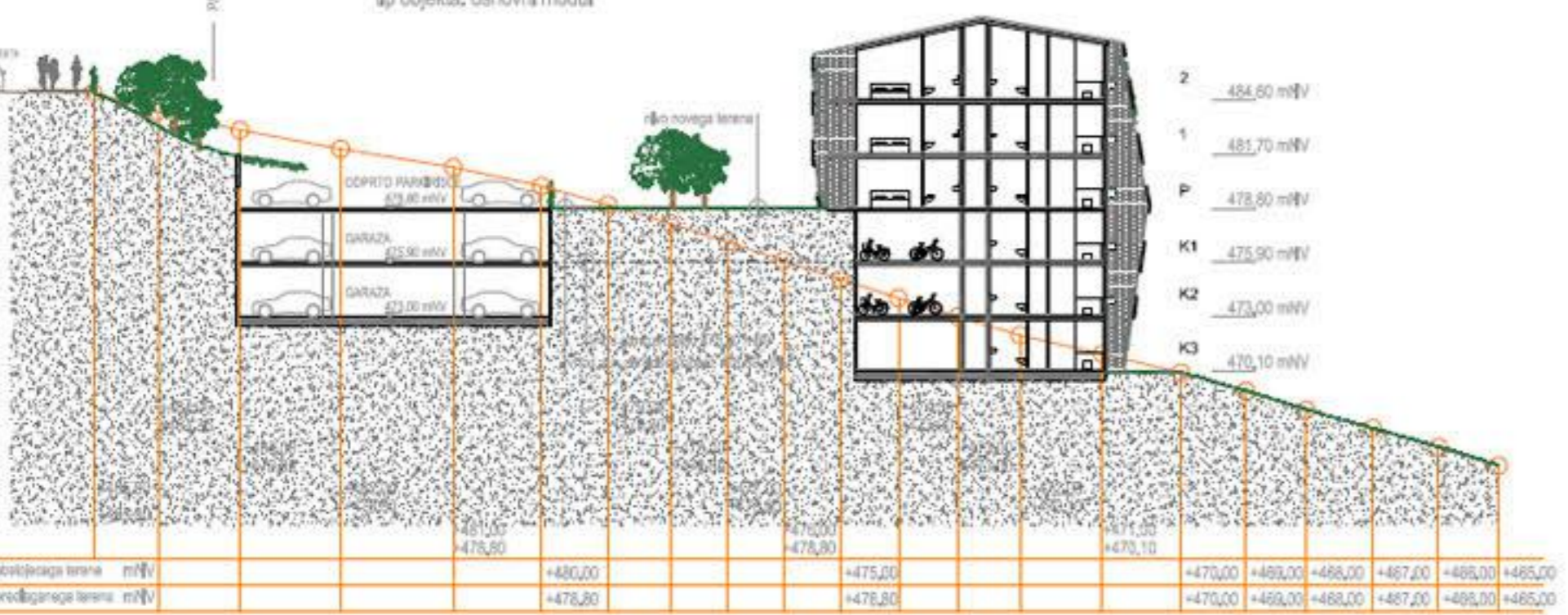


OBJEKT E

etaznost: levi del 3K+P+2
desni del 3K+P+2
število stanovanj: 23 enot
tip objekta: osnovni modul

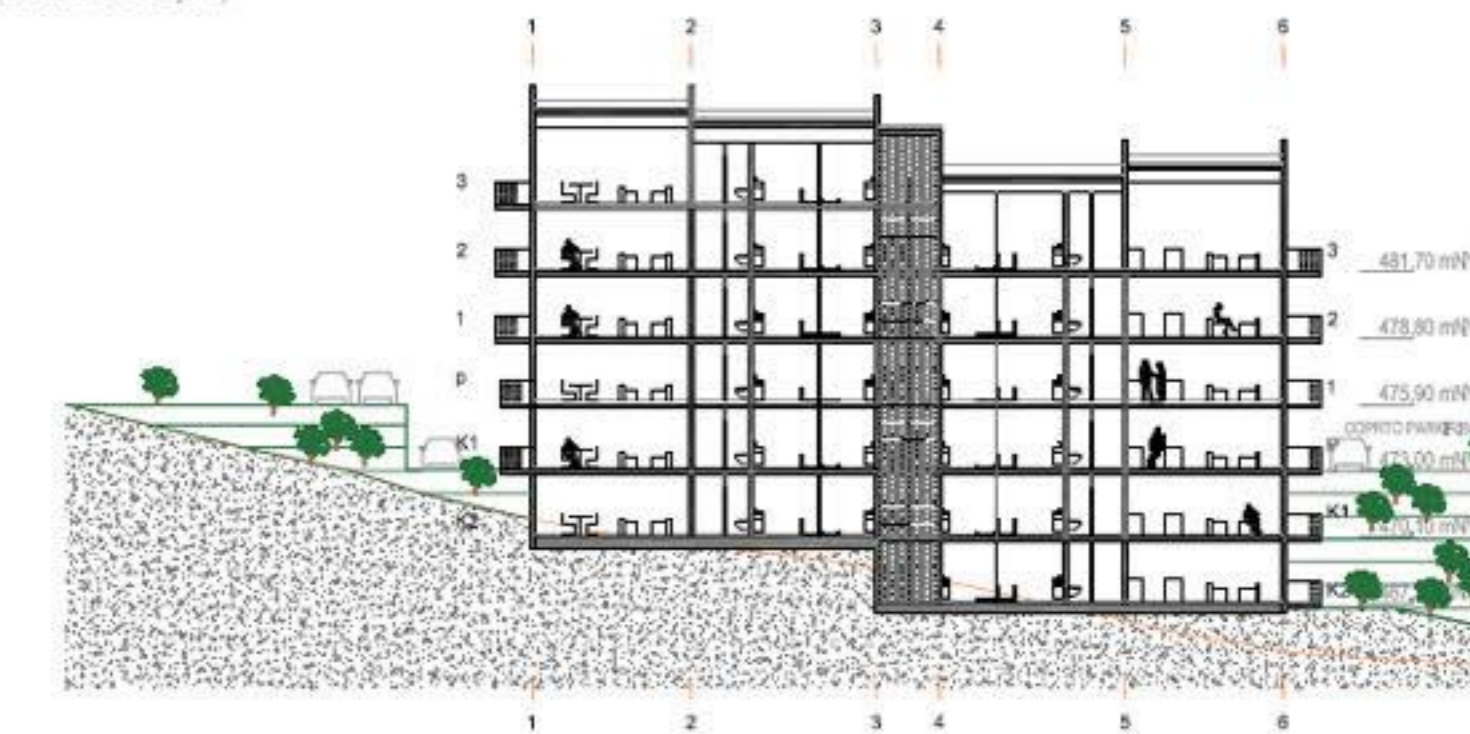
OBJEKT E

kota priključja +0,00=478,80mNM (desni del / vhod v objekt)
kota priključja +0,00=475,90mNM (levi del)



OBJEKT F

kota priključja +0,00=481,70mNM (desni del)
kota priključja +0,00=478,80mNM (levi del/vhod v objekt)
etaznost: levi del 2K+P+3
desni del 2K+P+3
število stanovanj: 27 enot
tip objekta: zračni modul

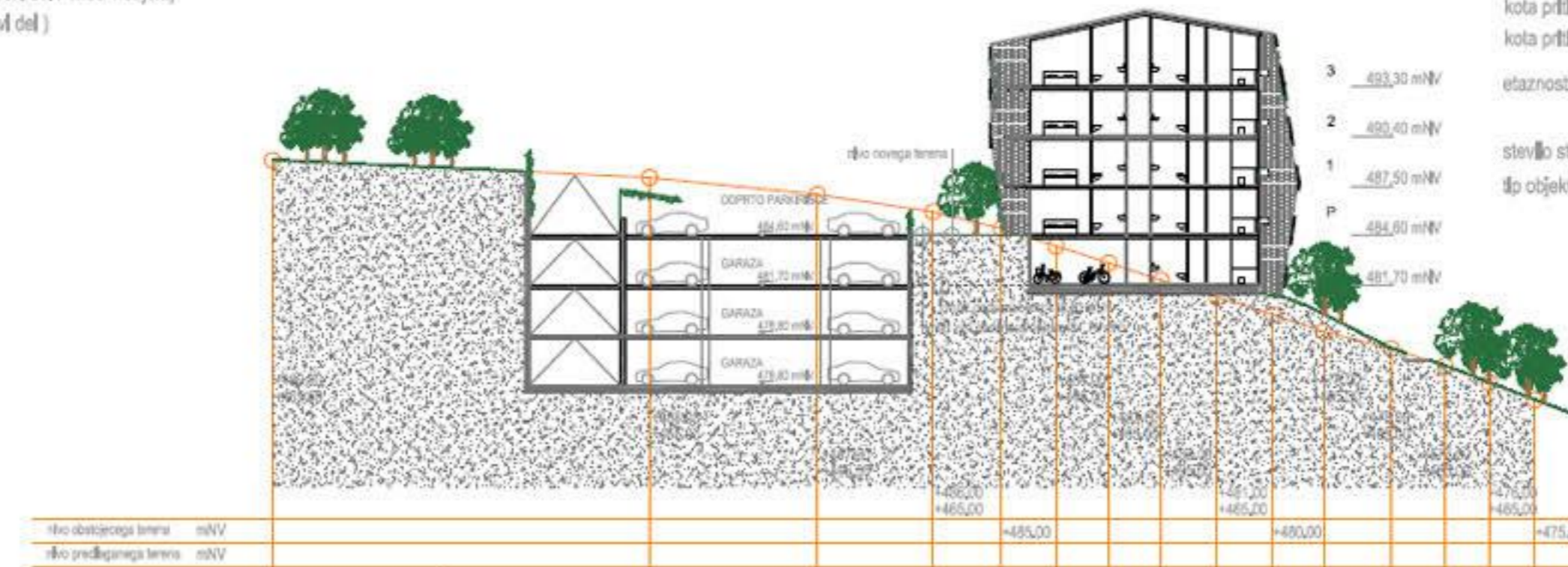
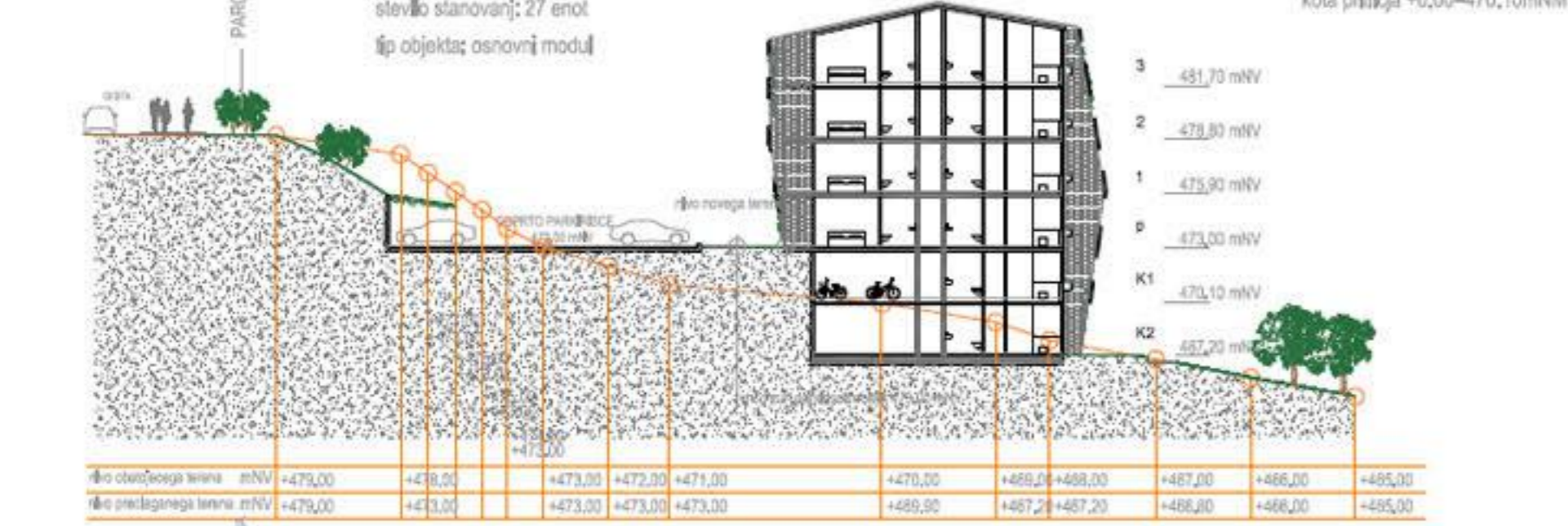


OBJEKT C

etaznost: levi del 2K+P+3
desni del 2K+P+3
število stanovanj: 27 enot
tip objekta: osnovni modul

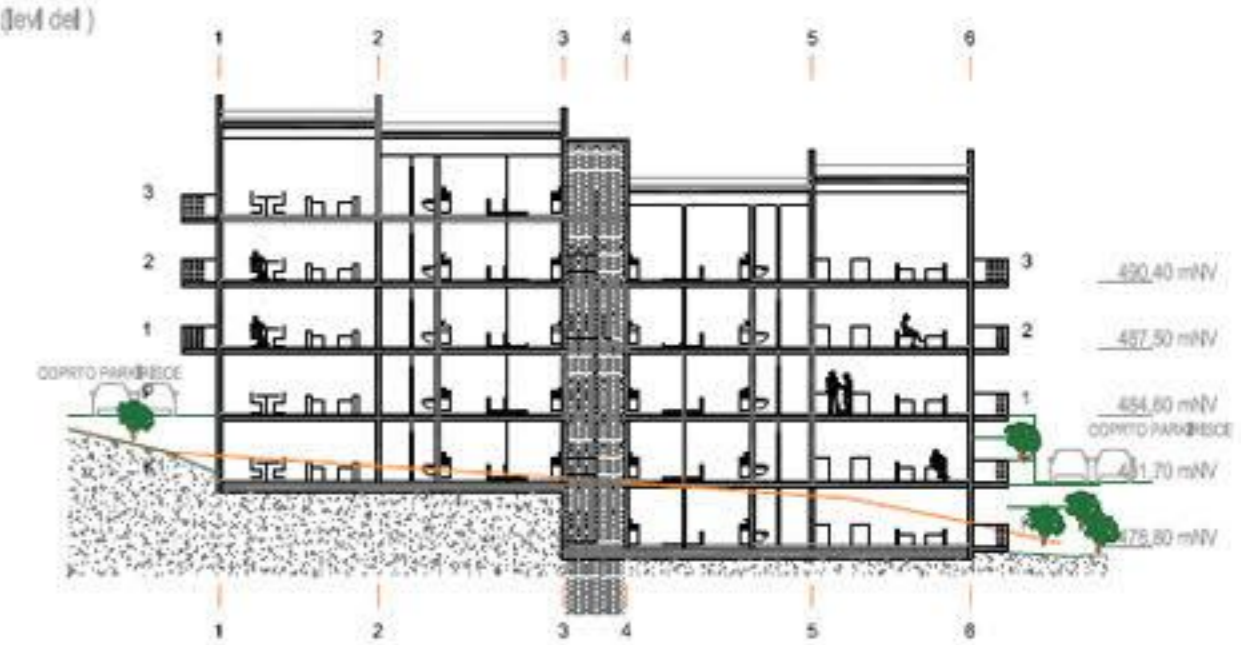
OBJEKT C

kota priključja +0,00=473,00mNM (desni del / vhod v objekt)
kota priključja +0,00=470,10mNM (levi del)



OBJEKT G

kota priključja +0,00=484,80mNM (desni del / vhod v objekt)
kota priključja +0,00=481,70mNM (levi del)
etaznost: levi del K+P+3
desni del K+P+3
število stanovanj: 25 enot
tip objekta: osnovni modul

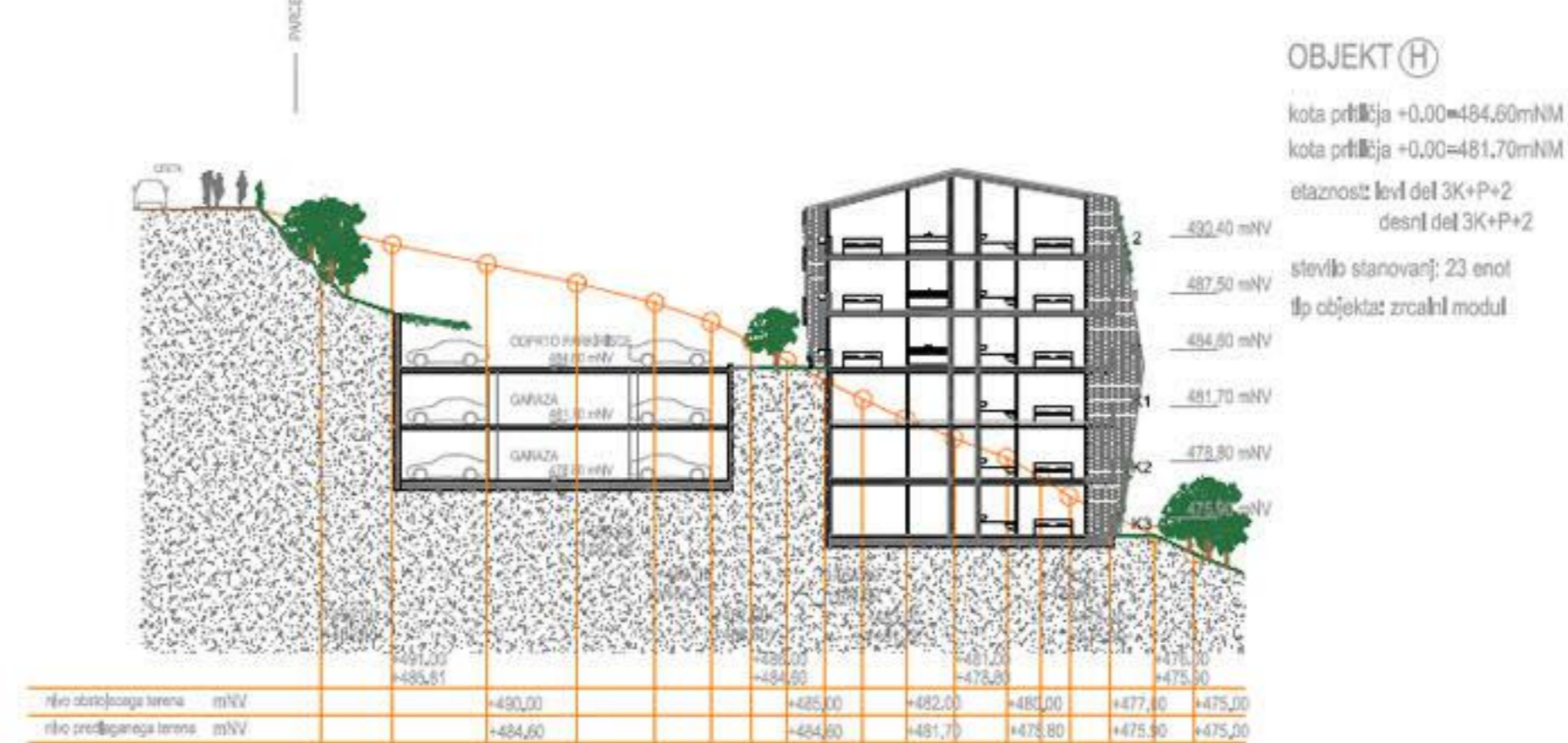
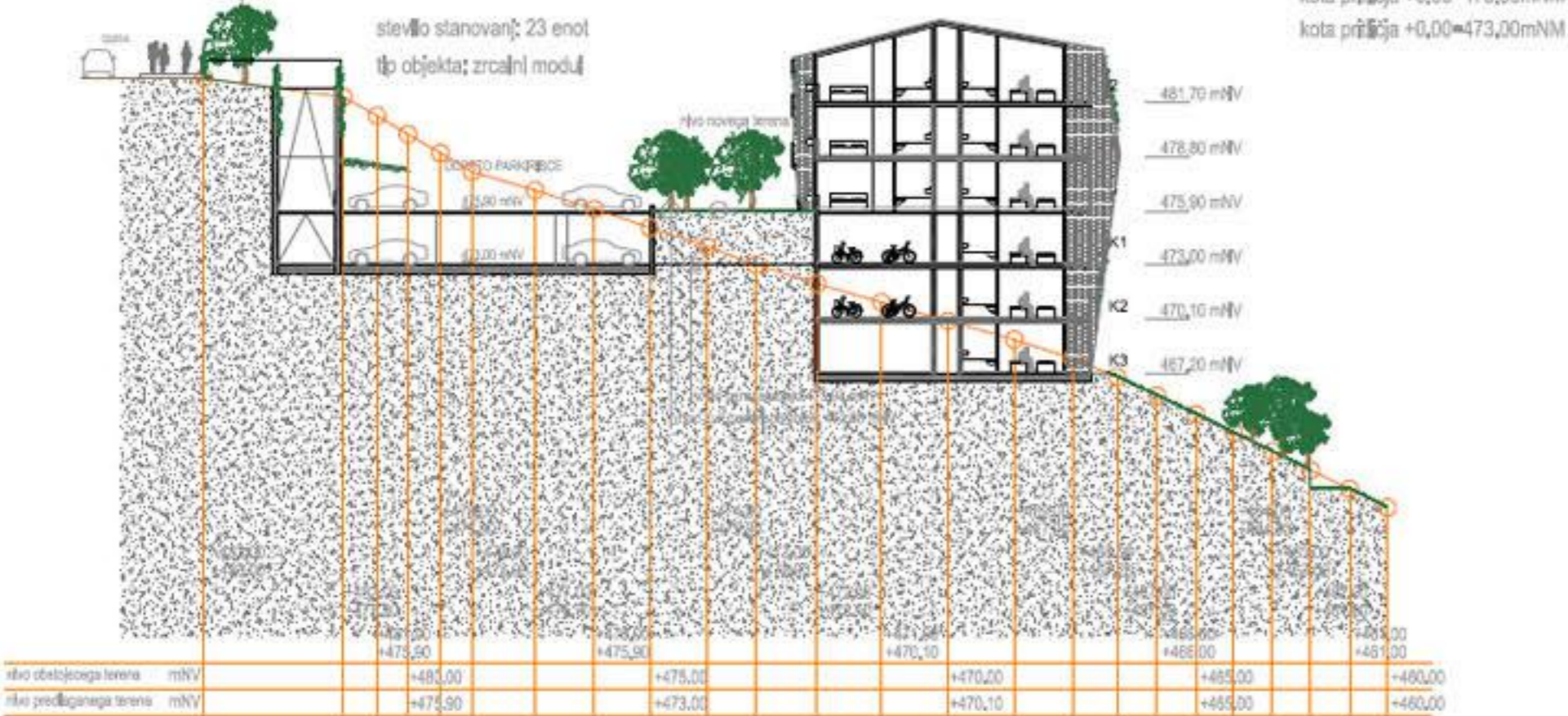


OBJEKT G

etaznost: levi del 3K+P+2
desni del 3K+P+2
število stanovanj: 23 enot
tip objekta: zračni modul

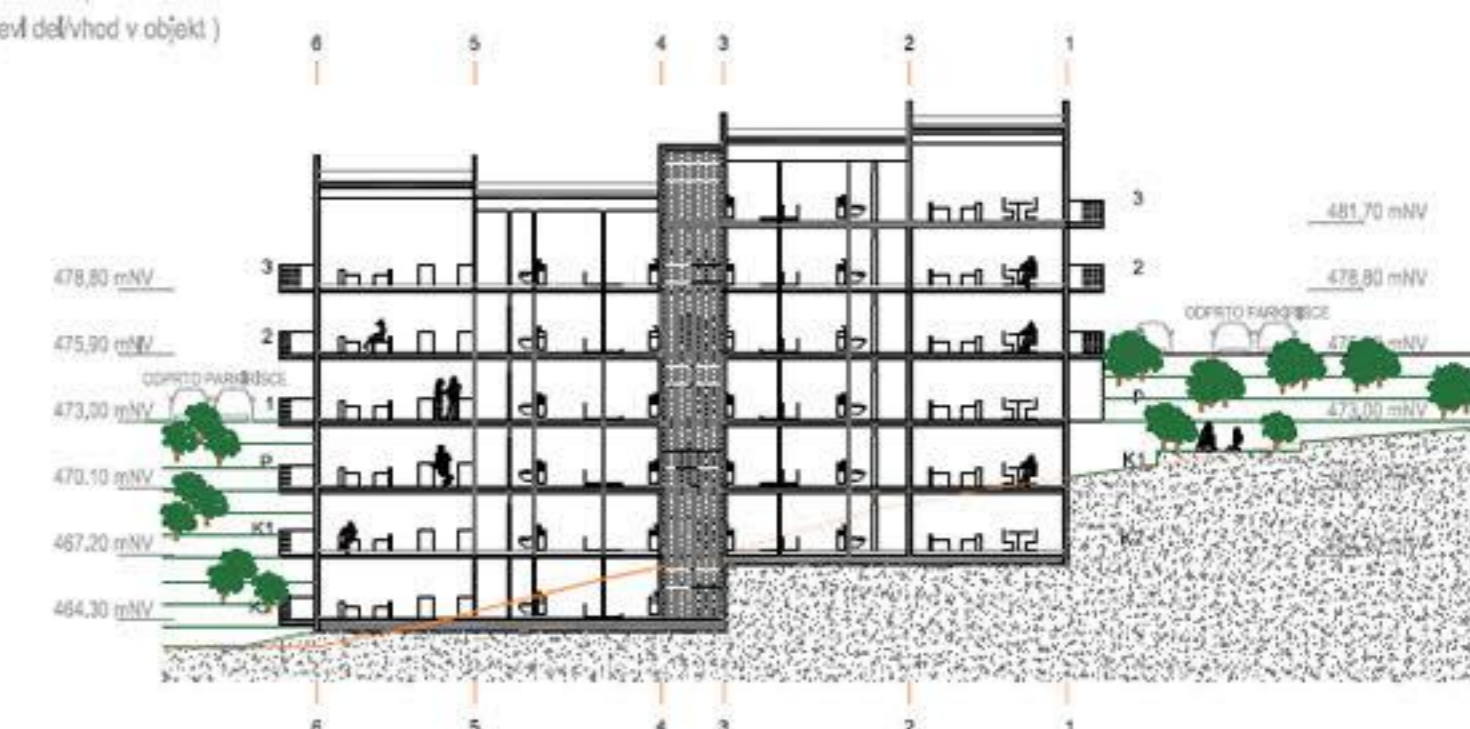
OBJEKT D

kota priključja +0,00=475,90mNM (desni del)
kota priključja +0,00=473,00mNM (levi del / vhod v objekt)



OBJEKT H

kota priključja +0,00=484,80mNM (desni del)
kota priključja +0,00=481,70mNM (levi del/vhod v objekt)
etaznost: levi del 3K+P+2
desni del 3K+P+2
število stanovanj: 23 enot
tip objekta: zračni modul



OBJEKT B

