

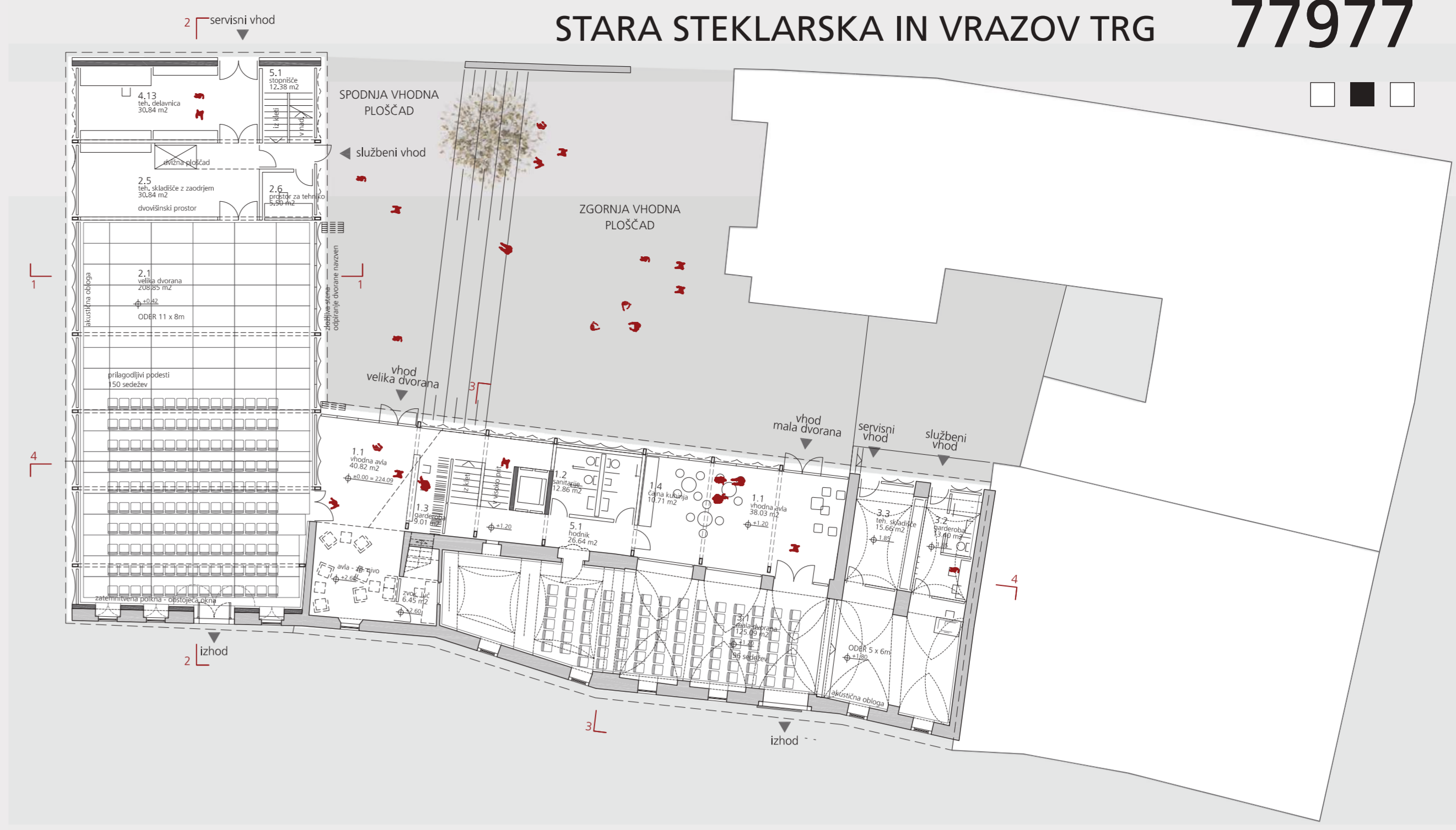
SITUACIJA S TLIŠISOM PRITLIČJA, 1:200

PREREZ B-B, VRAZOV TRG, 1:100

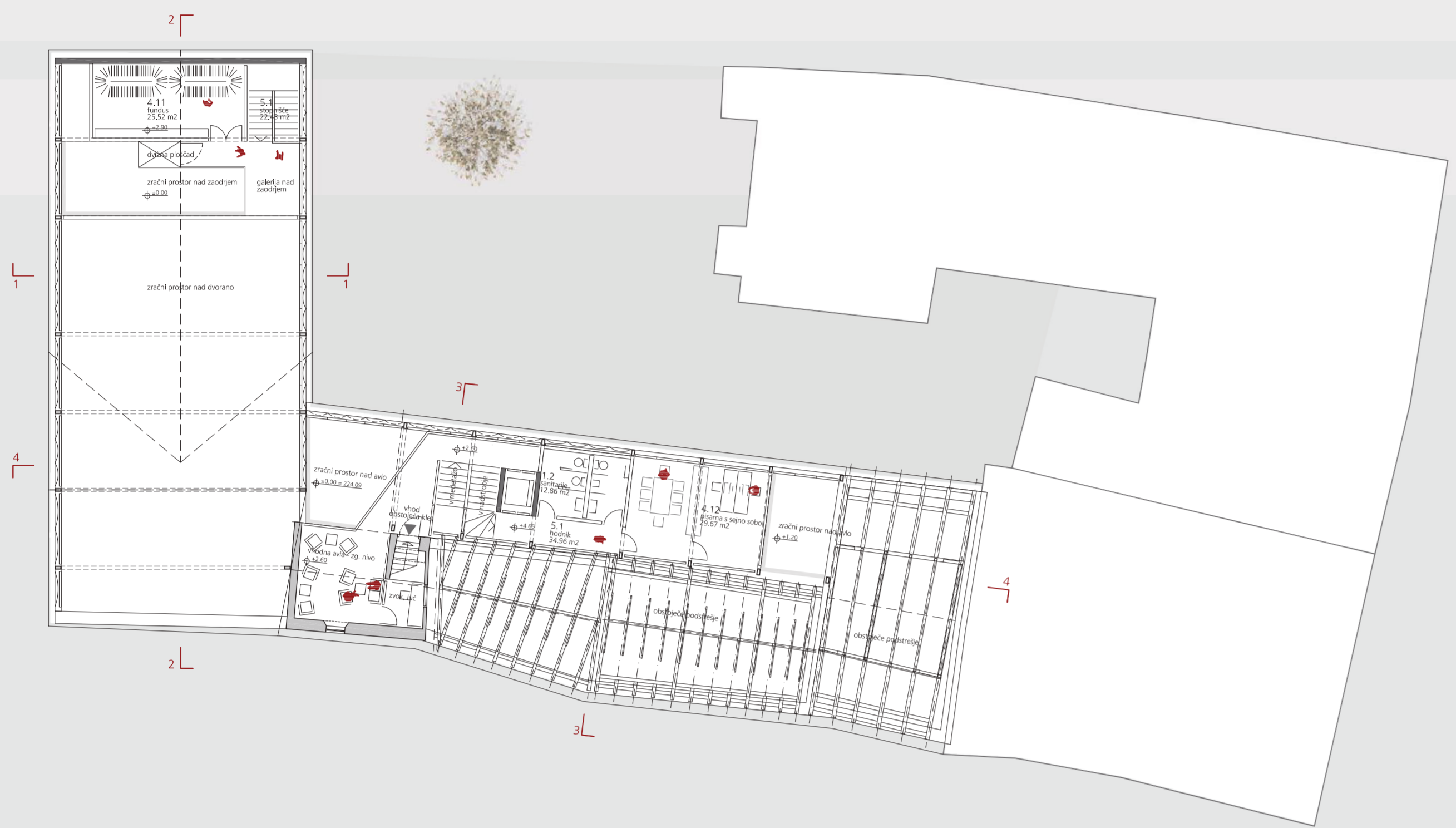




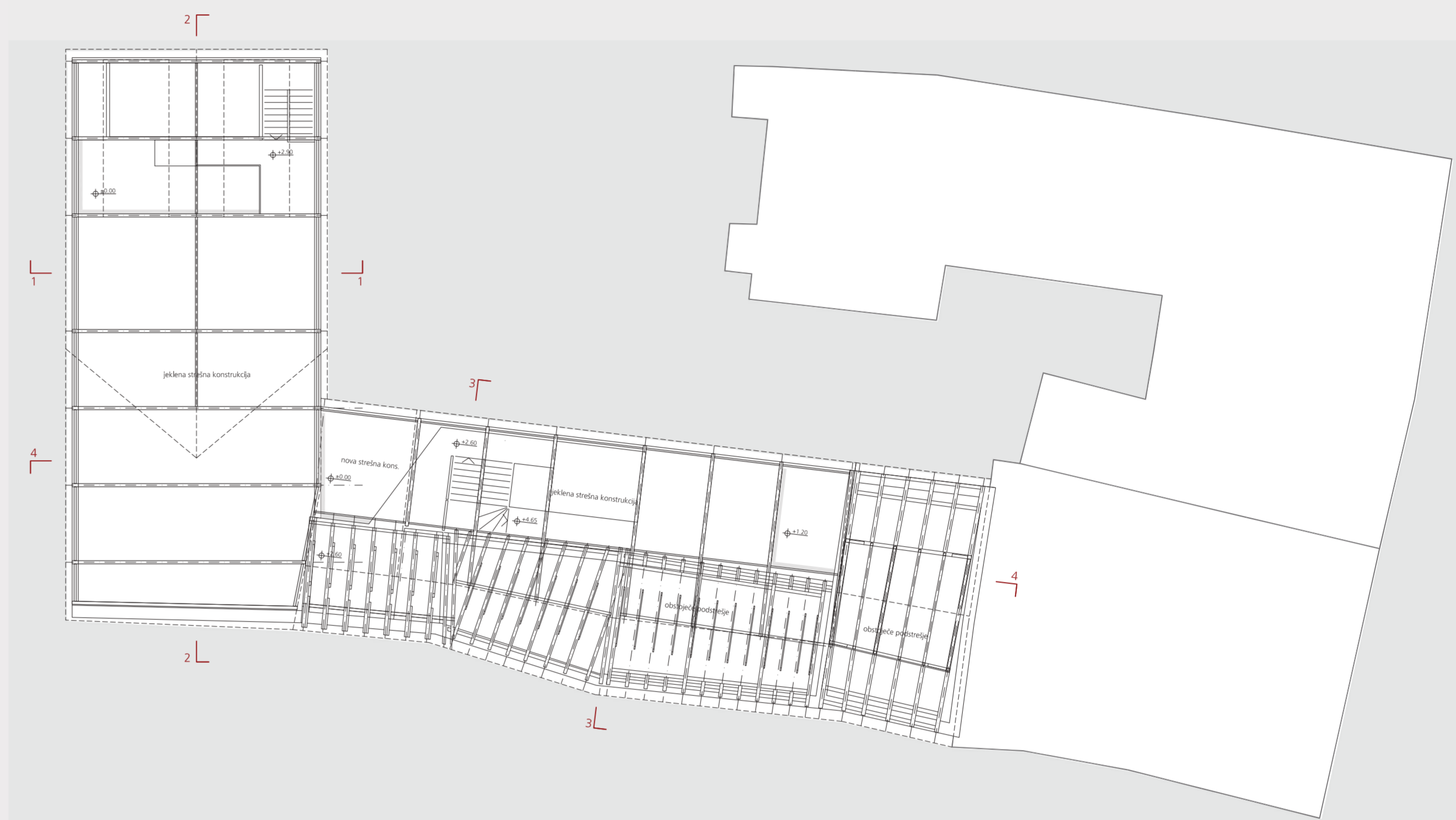
TLORIS KLETI_1:200



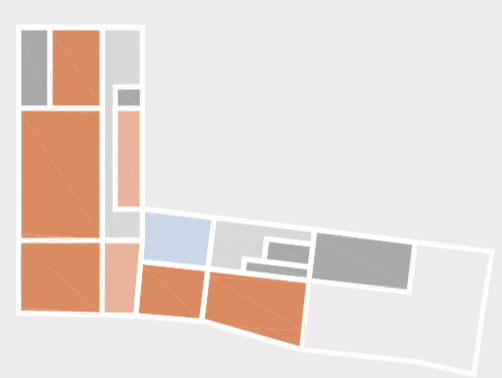
TLORIS PRITLIČJA_1:200



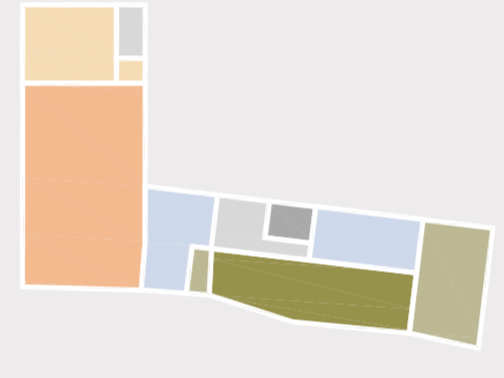
TLORIS NADSTROPJA_1:200



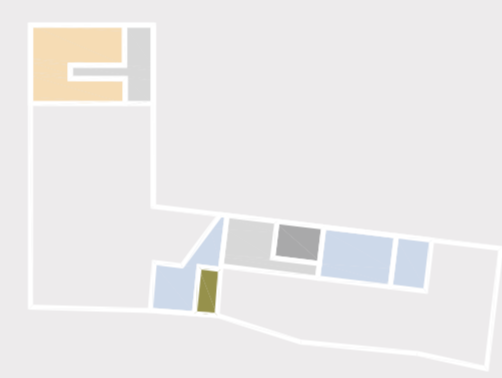
TLORIS OSTREŠJA_1:200



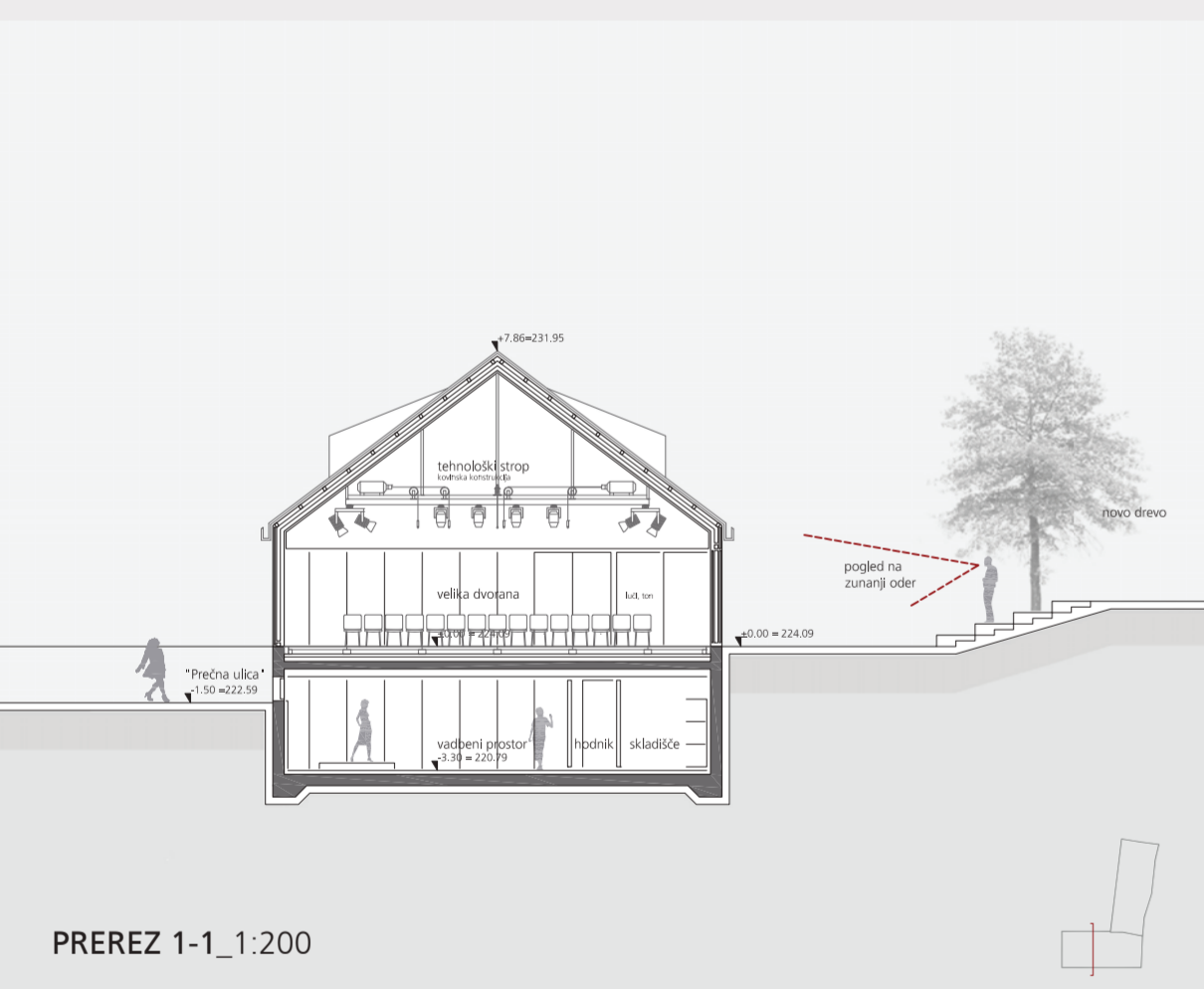
klet
skupni prostori
društveni prostori
komunikacije
servisni prostori/sanitarije



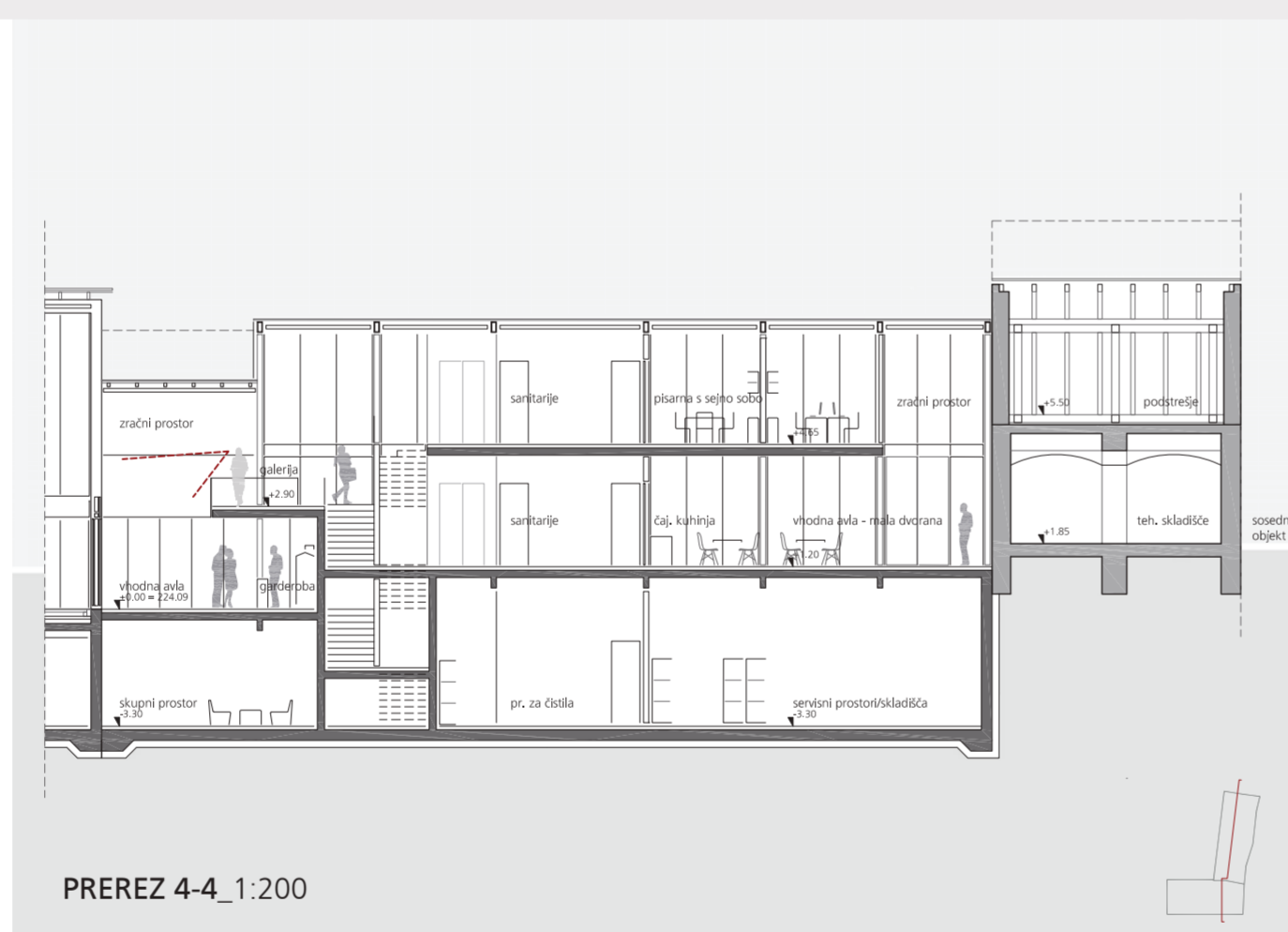
pritličje
velika dvorana
skupni prostori
komunikacije
servisni prostori/sanitarije



nadstropje
velika dvorana
skupni prostori
komunikacije
servisni prostori



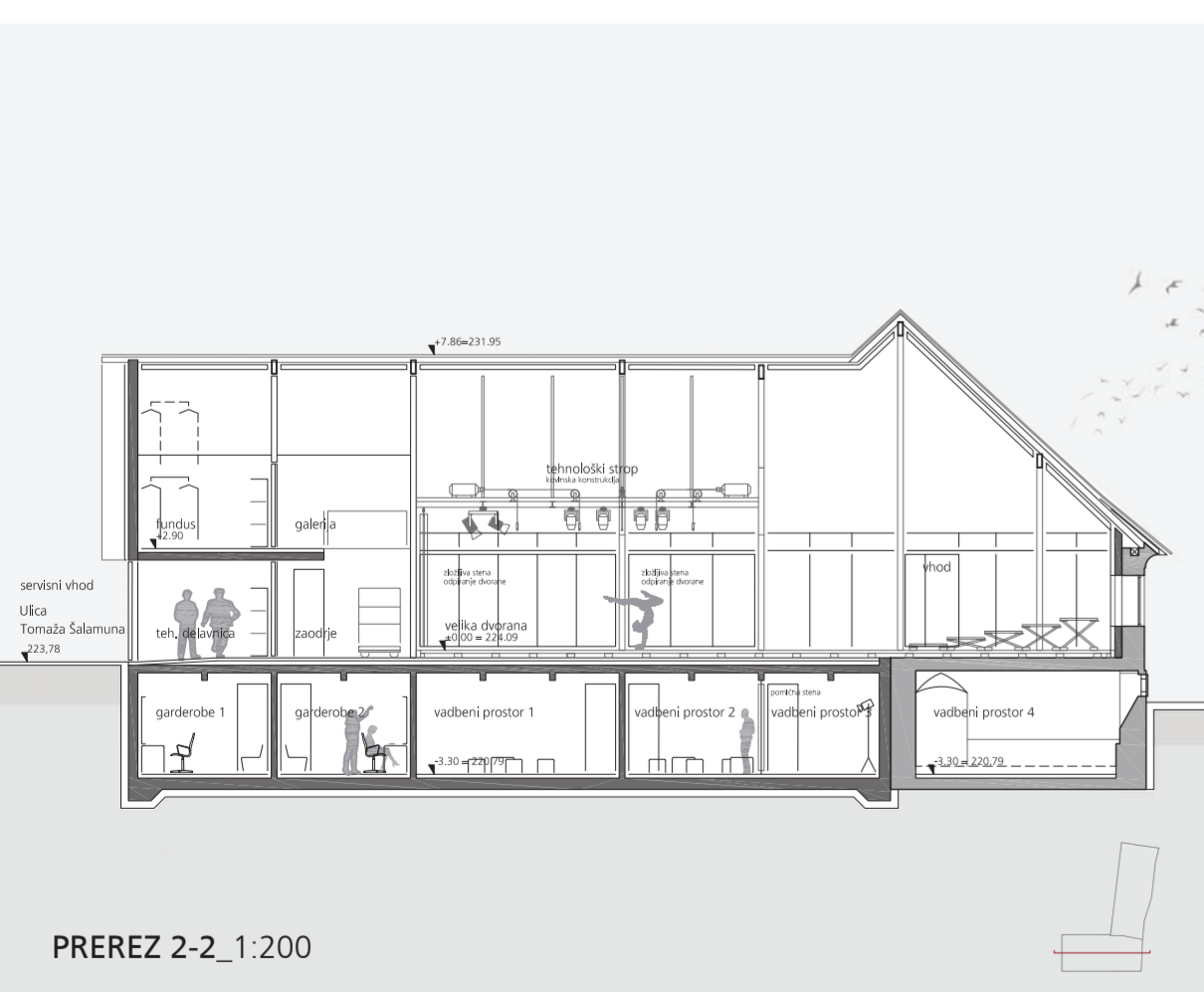
PREREZ 1-1_1:200



PREREZ 4-4_1:200



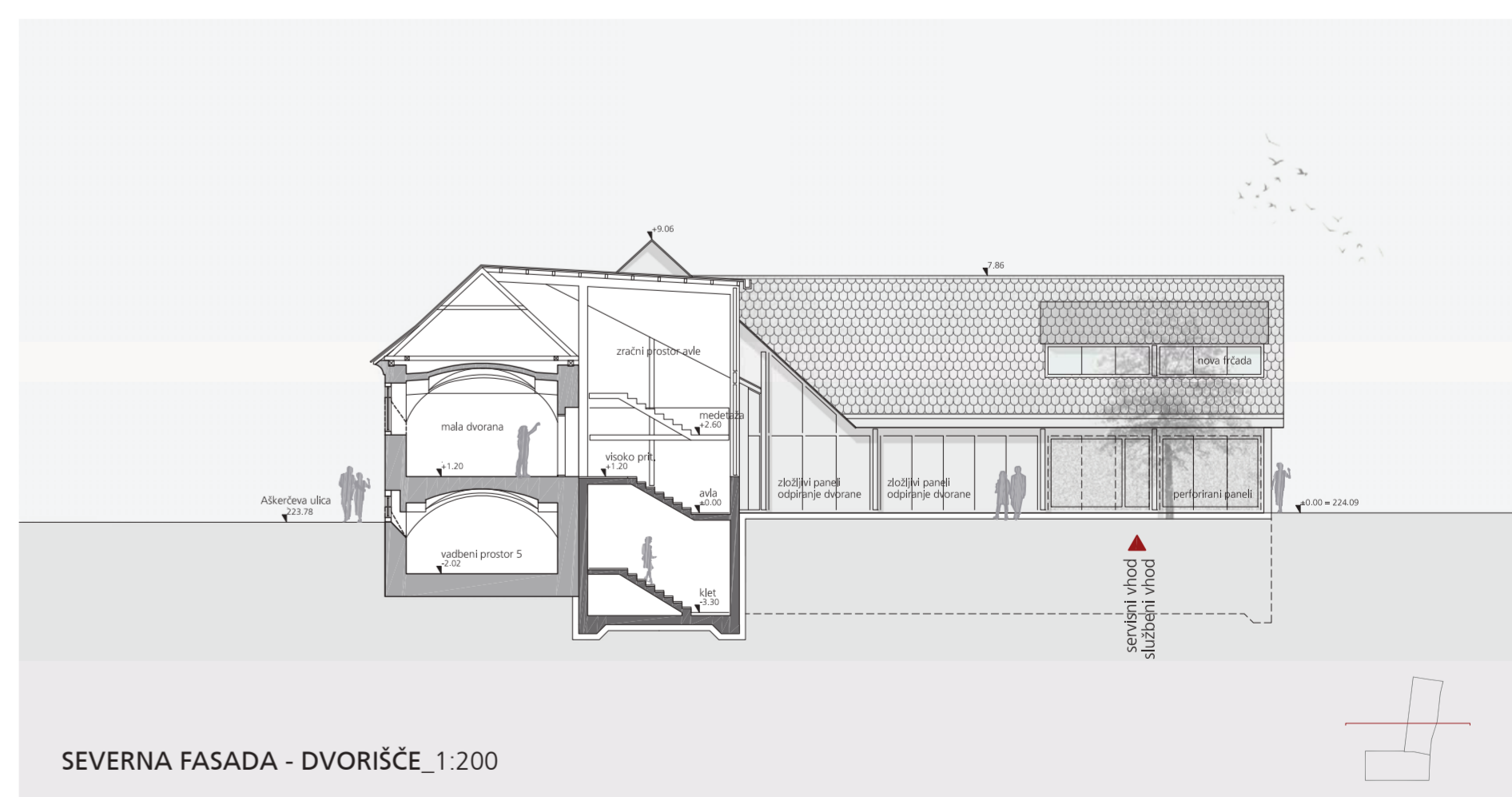
TLORIS STREHE_1:200



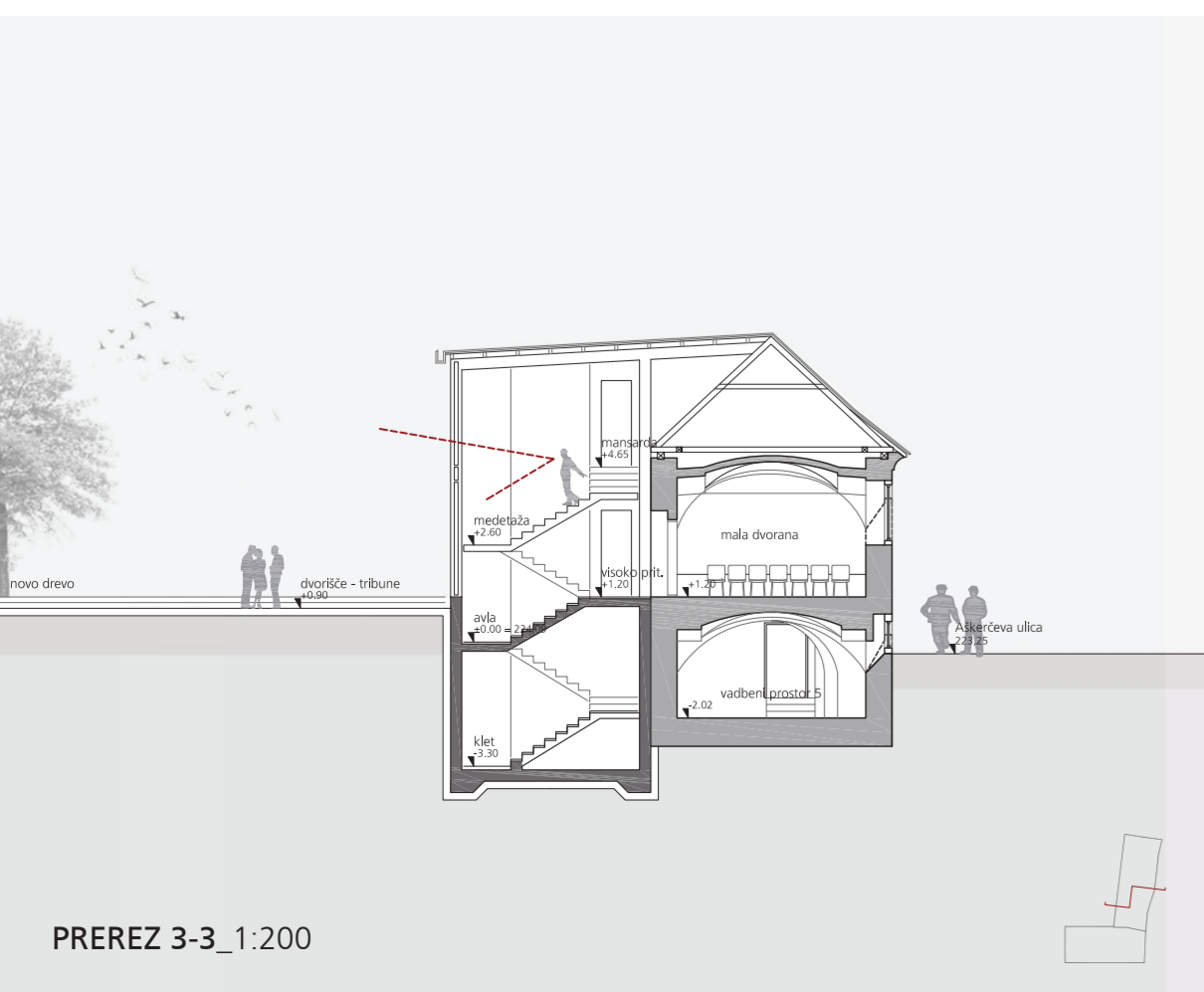
PREREZ 2-2_1:200



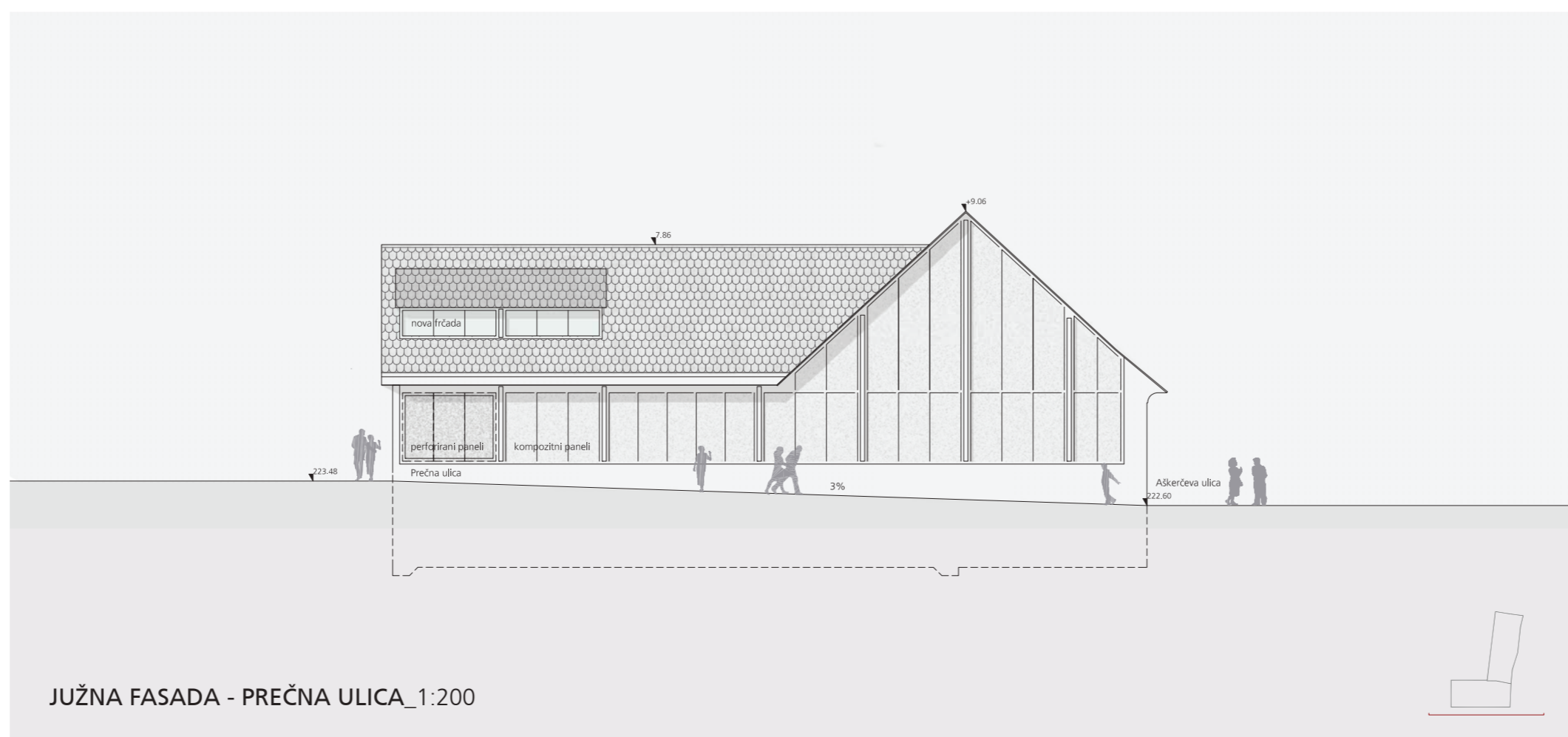
VZHODNA FASADA - AŠKERČEVA ULICA_1:200



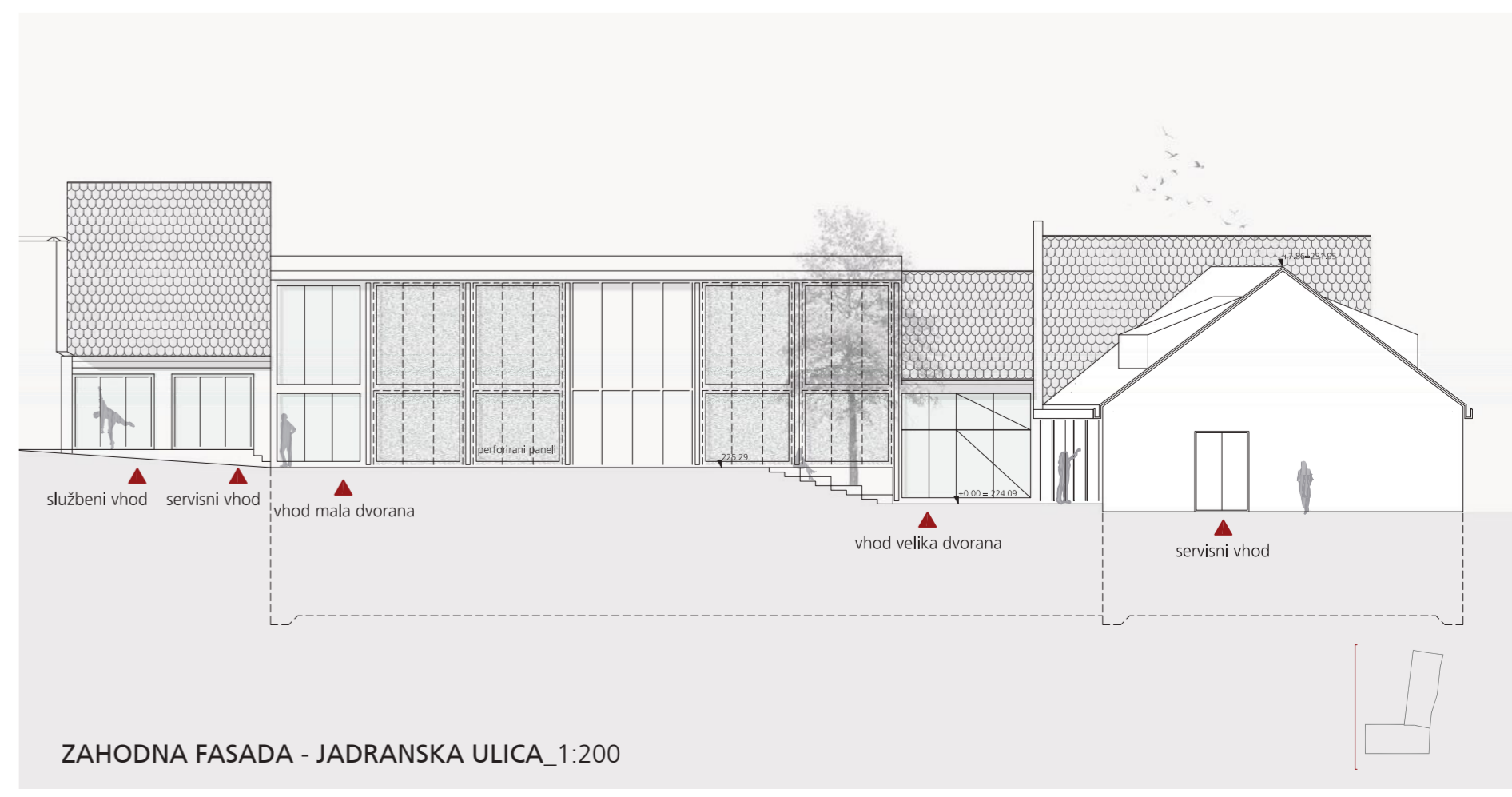
SEVERNA FASADA - DVORIŠČE_1:200



PREREZ 3-3_1:200



JUŽNA FASADA - PREČNA ULICA_1:200



ZAHODNA FASADA - JADRANSKA ULICA_1:200



HEMA POGLEDOV

- 1 pogled po Jadranski ulici
- 2 pogled na Vrazov trg
- 3 pogled na Vrazov trg
- 4 pogled na Vrazov trg
- 5 pogled na zgornjo vhodno ploščad
- 6 pogled na zunanji oder velike dvorane
- 7 pogled na vhodno ploščad

HEMA PREHODNOSTI SKOZI PROSTOR

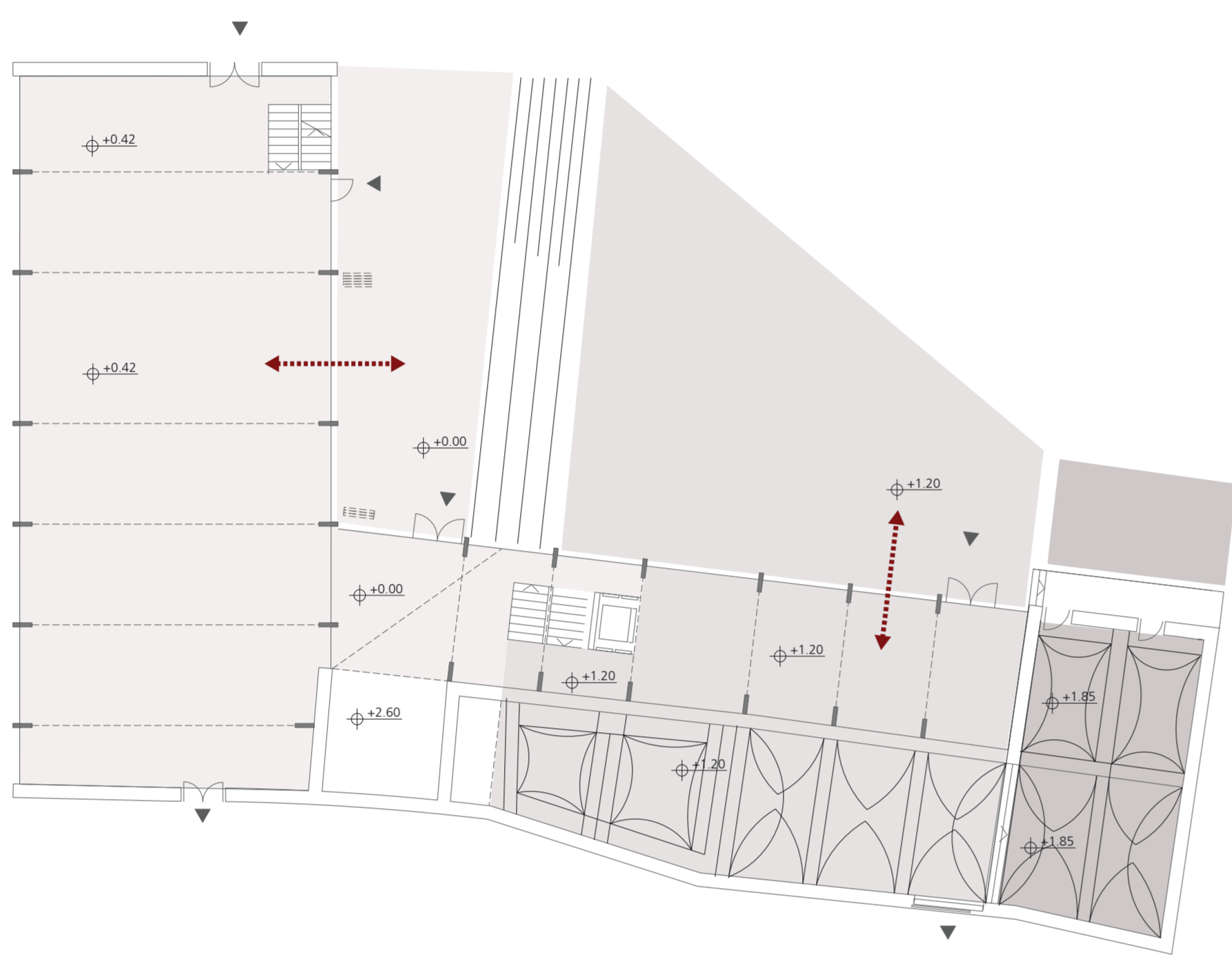
- 1 dostop na Jadransko ulico
- 2 dostop na Ulico Tomaža Salamuna
- 3 prehod na dvorišče Stare steklarske
- 4 dostop na Aškerčeve ulice
- 5 dostop na "Prečno ulico"
- 6 dostop z Vošnjakovke ulice
- 7 dostop iz pokritega prehoda

HEMA PROMETA

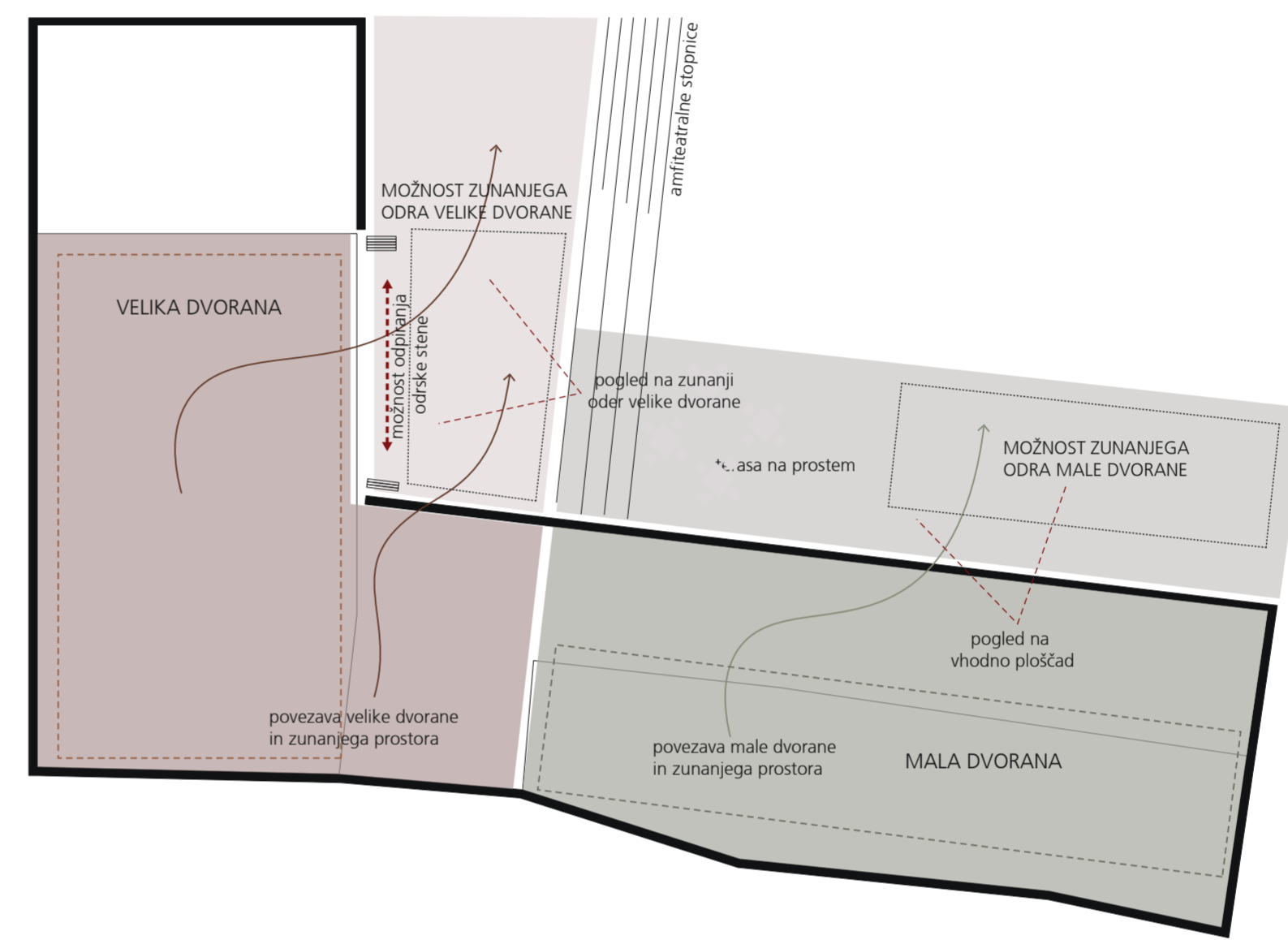
- potopni stebriček
- parkirni prostor za stanovalce
- stojala za kolesa

HEMA TLAKOVANJA

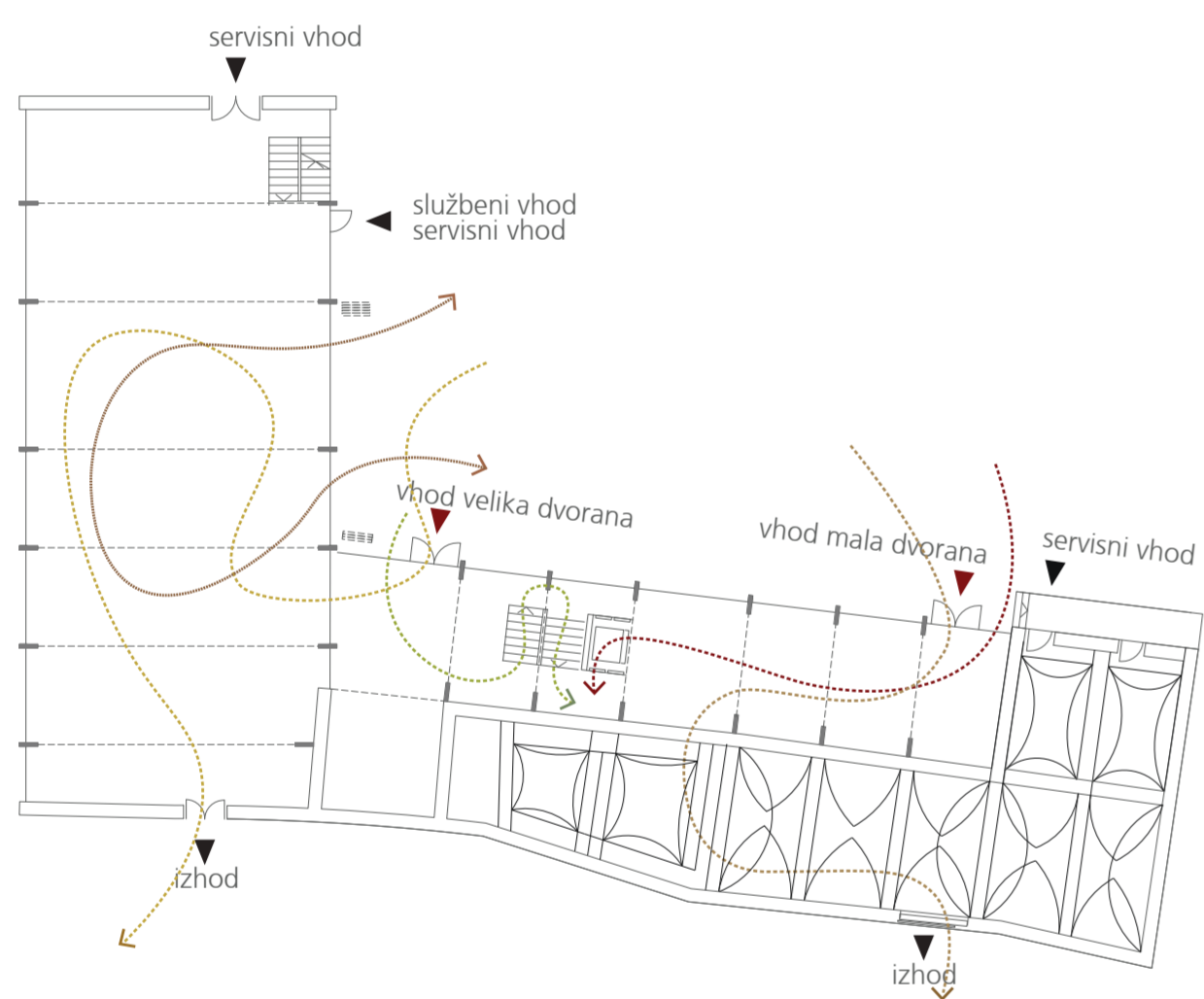
- TONALITNE KOCKE 8/4, POLOŽENE POLKROŽNO
- TONALITNE KOCKE 10/10-10/5, POLOŽENE VALOVITO
- MAČJE GLAVE



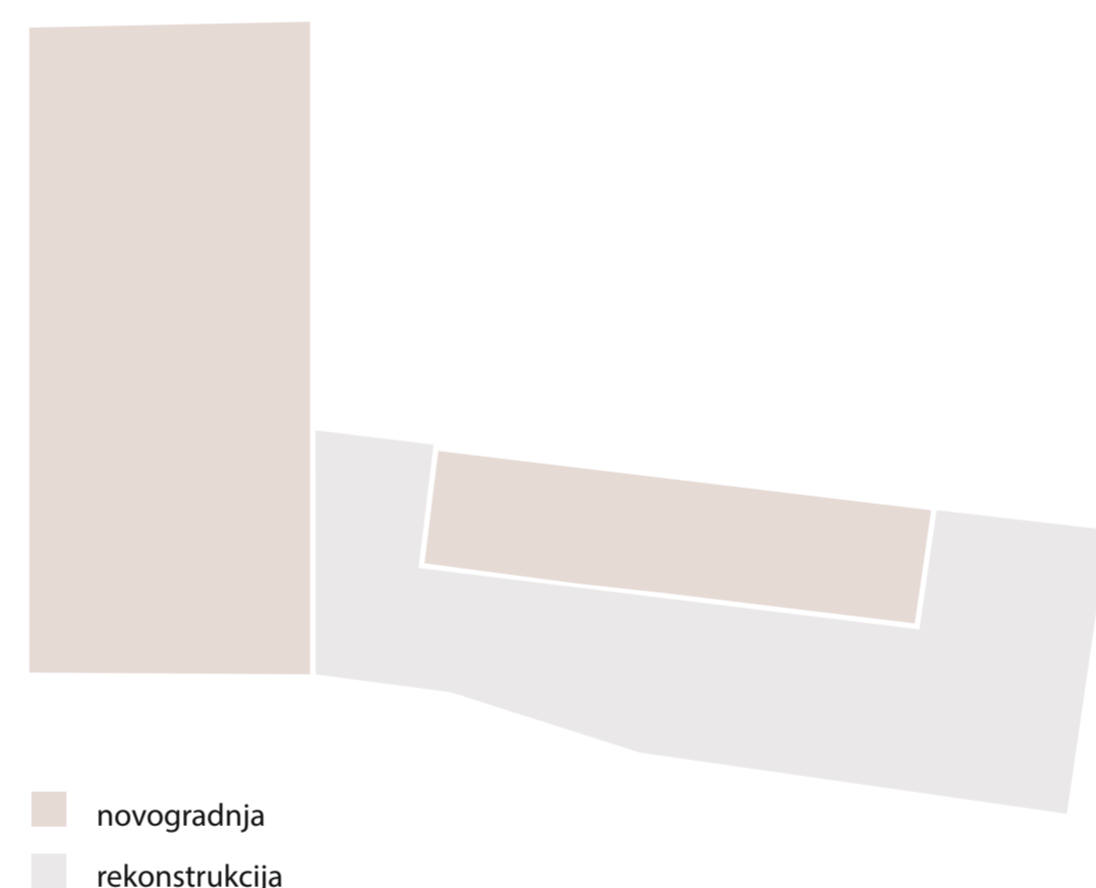
HEMA NIVOJSKIH PRILAGODITEV V PRITILČJU



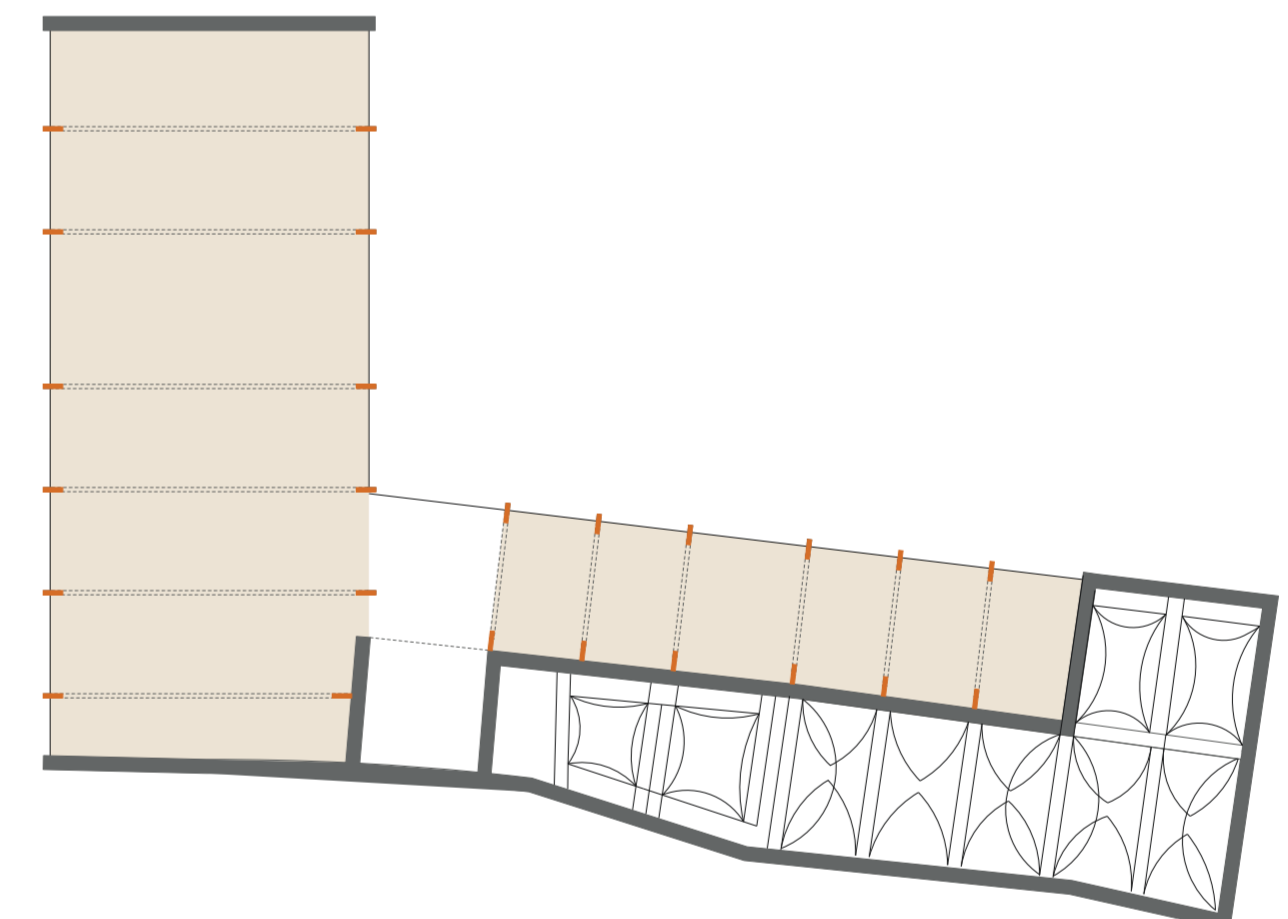
ODPIRANJE VELIKE IN MALE DVORANE NA DVONIVOJSKO DVORIŠČE



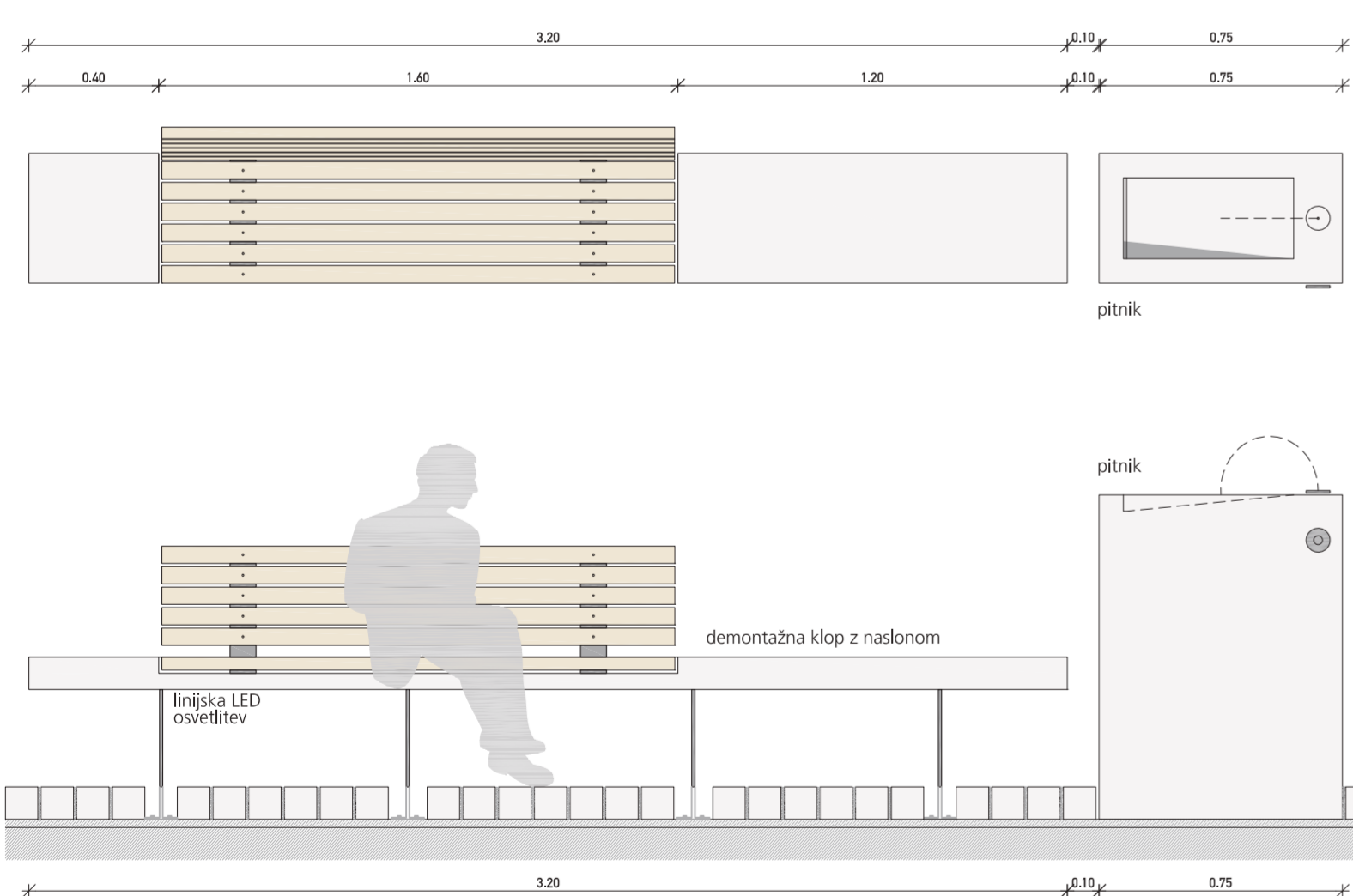
HEMA DOSTOPOV IN PREHODNOSTI V OBJEKTU



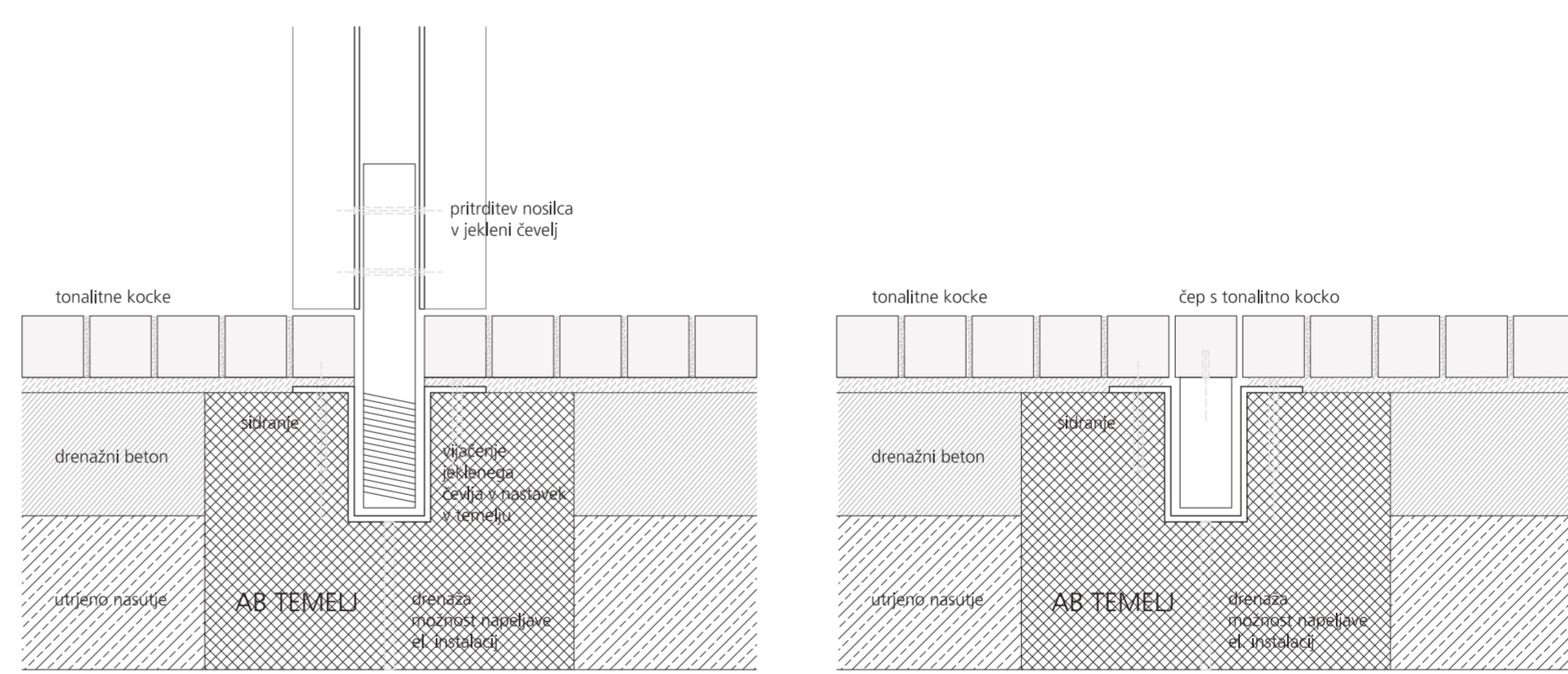
HEMA POSEGOV V PROSTOR



KONSTRUKCIJA NOVEGA IN OBSTOJEČEGA DELA

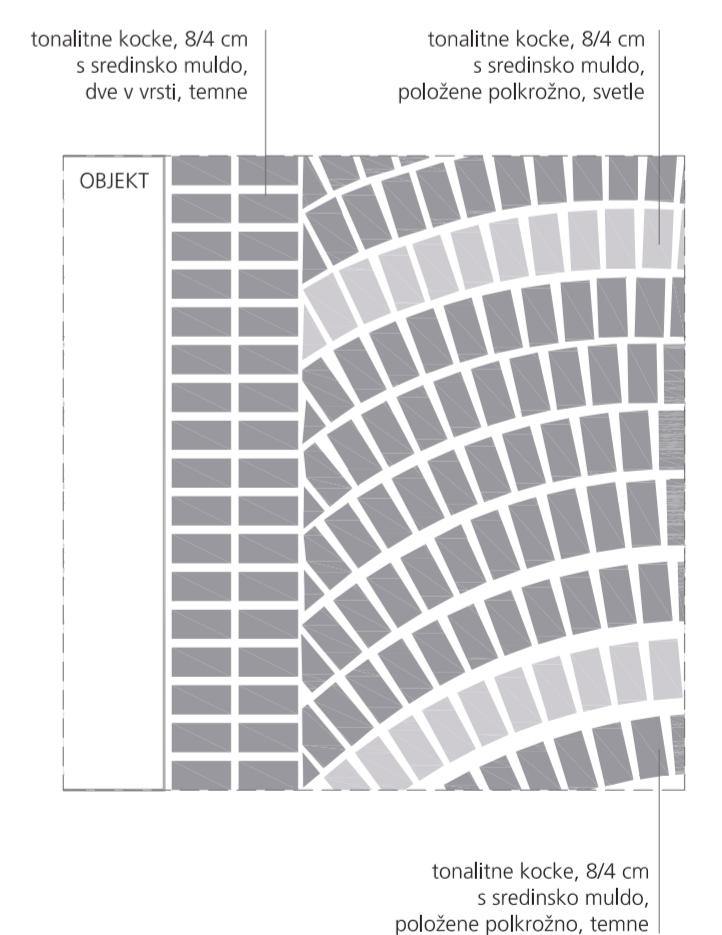


DETALJ KLOPIJ IN PITNIKA_1:20

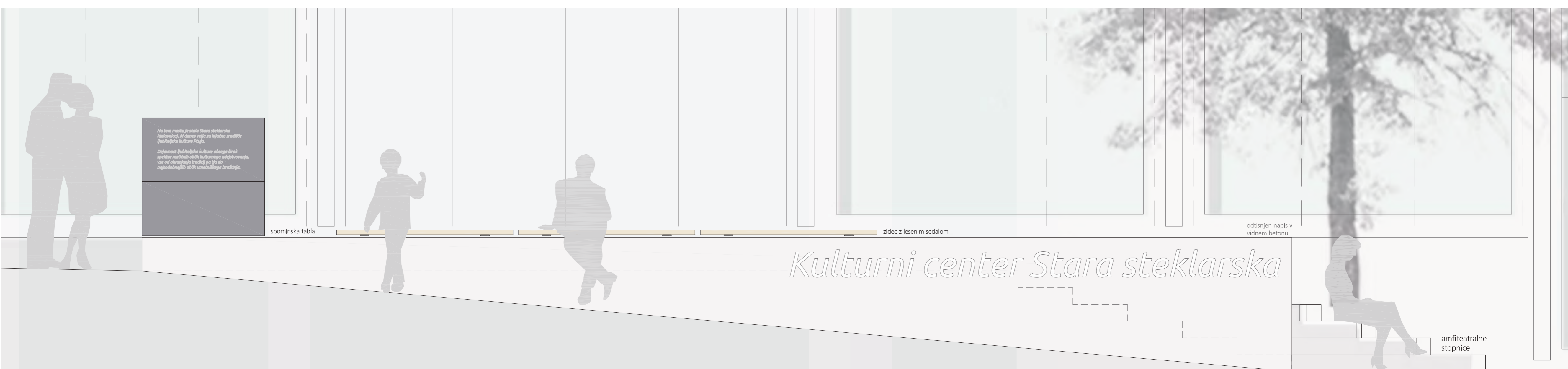


PRITRILNI ELEMENT V TLAKU - V UPORABI

PRITRILNI ELEMENT V TLAKU - SKRITO



DETALJ STIKA TLAKA Z OBJEKTOM_1:10



Kulturni-center Stara steklarska

DETALJ ZIDCA S KLOPJO IN SPOMINSKO PLOŠČO_1:20