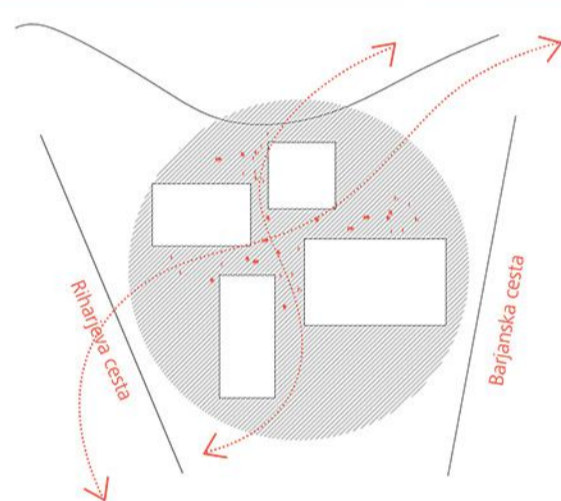
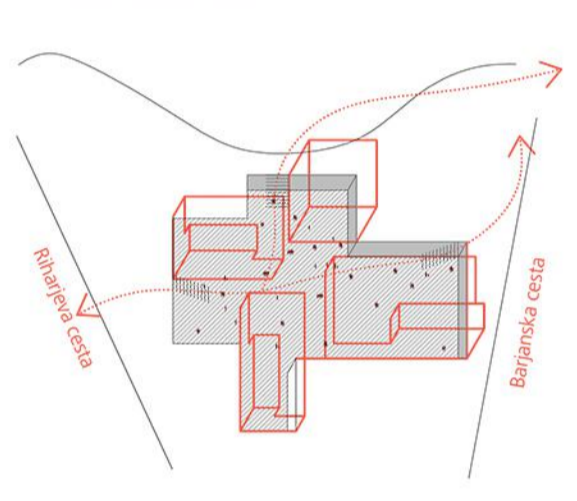


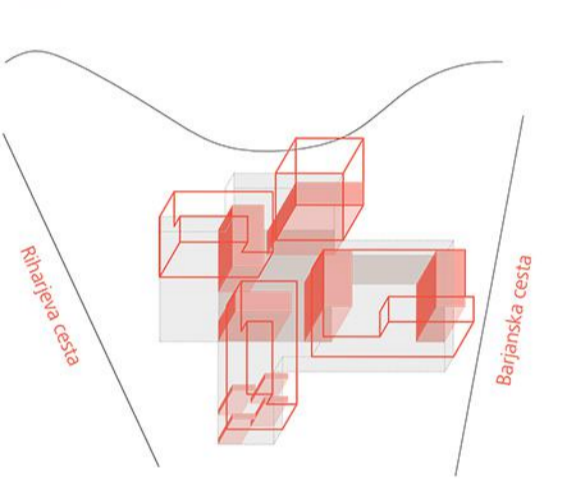
POGLED IZ ZRAKA PROTI CENTRU ZNANOSTI



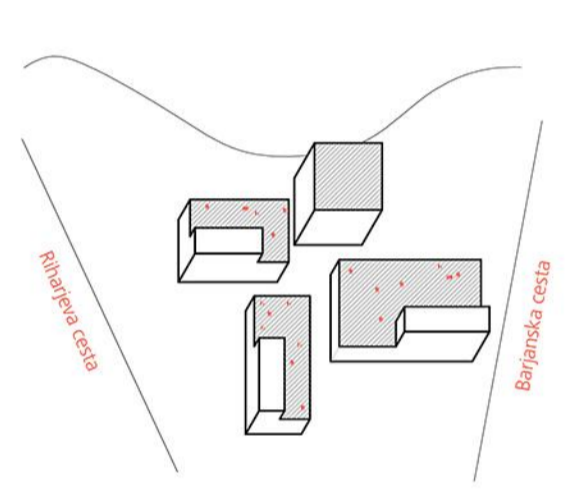
SHEMA_PREHODNOST LOKACIJE
Z umikom večinskega deleža tlorisnih površin se partnerski del lokacije sprosti in obiskovalcu nudi prosto prehajanje med štirimi volumni.



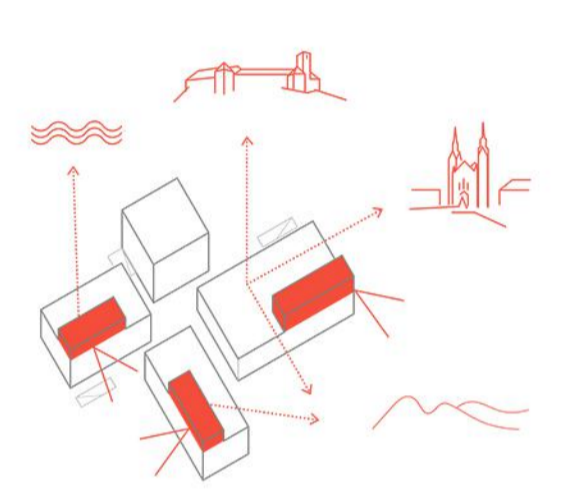
SHEMA_DVIGOVANJE SAMOSTOJNIH VOLUMNOV
Štirje volumni, ki navzven delujejo prostostojajo, se z osrednjim prostorom povezujejo v kletni etaži, v izpostavljenih točkah pa se dvigajo.



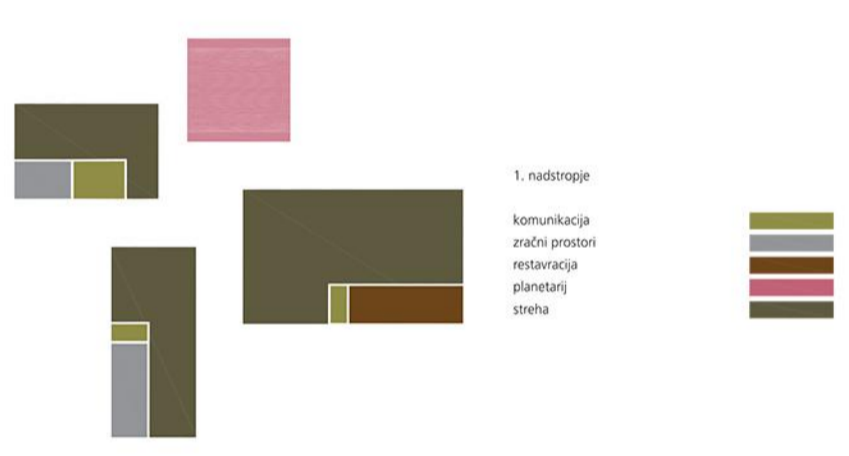
SHEMA_NIVOJSKO POVEZOVANJE PROGRAMA PO VERTIKALI
Osrednji prostor skozi vertikale po celotni višini povezuje volumne, tako deluje kot prostorski in programski povezovalni element.



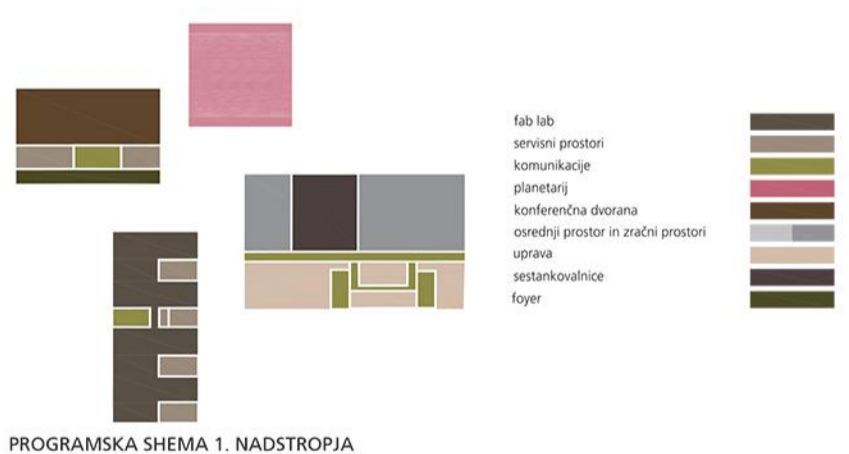
SHEMA_ZELENA STREHA KOT NOV JAVNI PROSTOR
Ravne pohodne strehe z medsebojnimi povezovalnimi elementi in premišljeno zasnovanim programom postanejo nov kvaliteten urbani sistem.



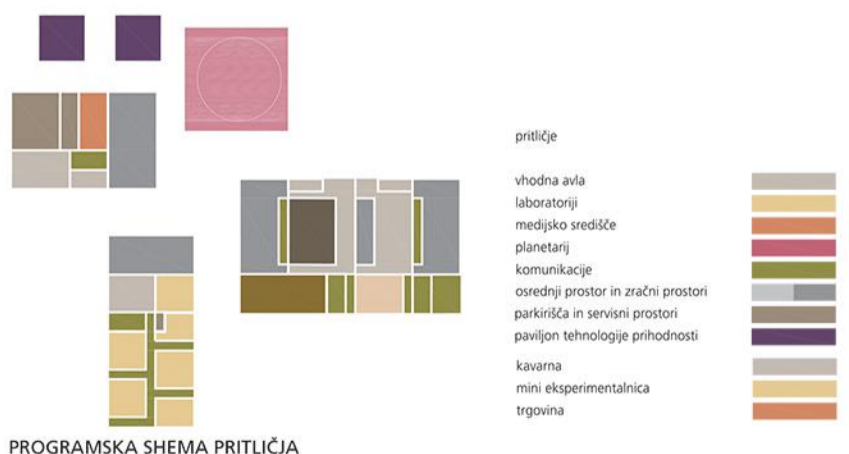
SHEMA_STREHE KOT STIČIŠČE RAZGLEDNIH TOČK
Vogalni poudarki volumnov vzpostavljajo dialog s širšo mestno okolico in obenem usmerjajo poglede na okolišne vedute.



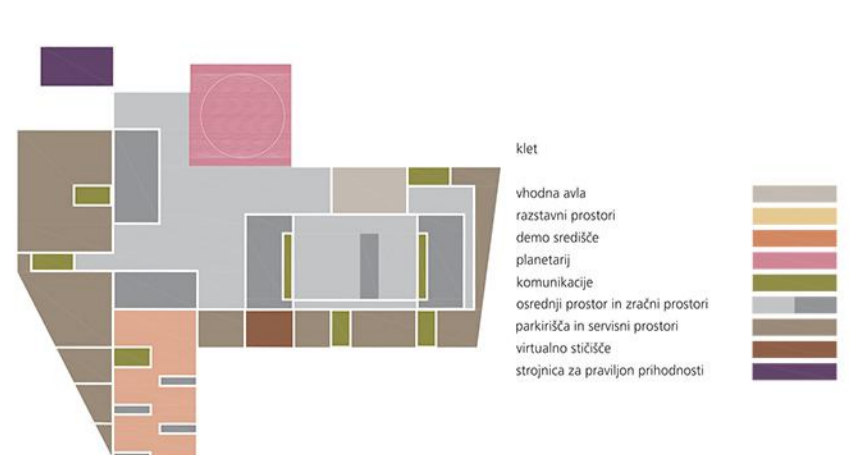
PROGRAMSKA SHEMA 2. NADSTROPJA



PROGRAMSKA SHEMA 1. NADSTROPJA



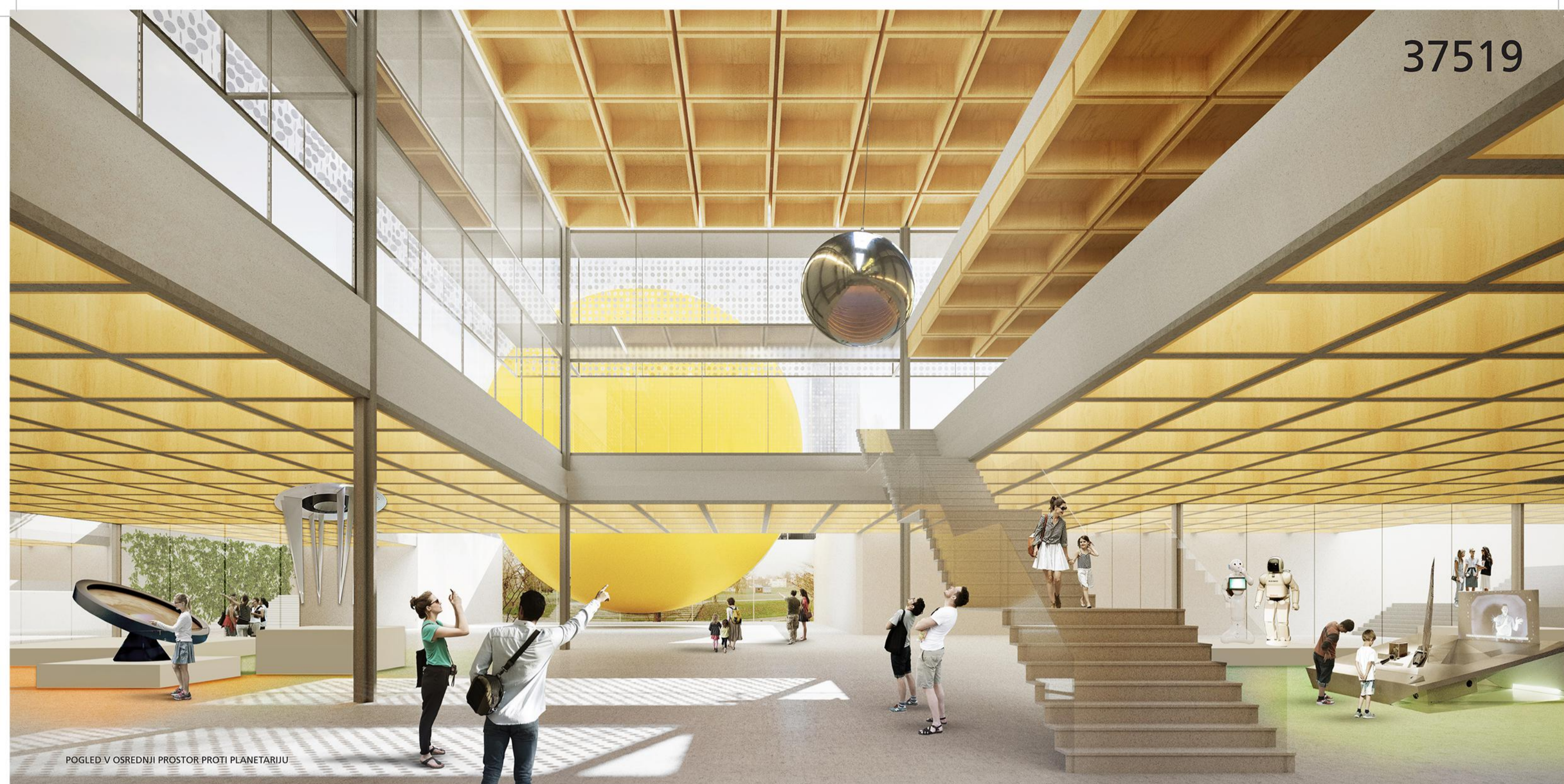
PROGRAMSKA SHEMA PRITLIČJA



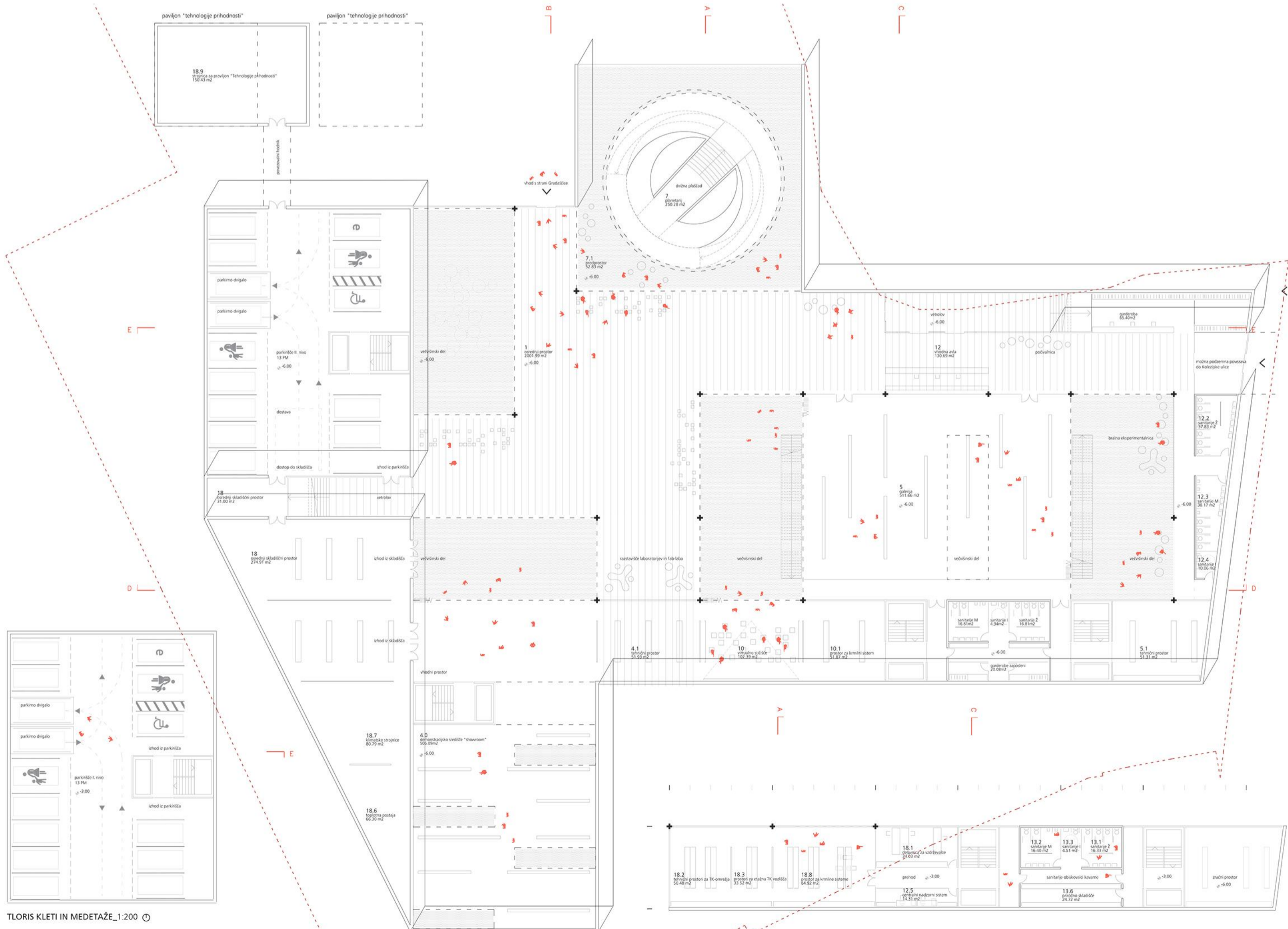
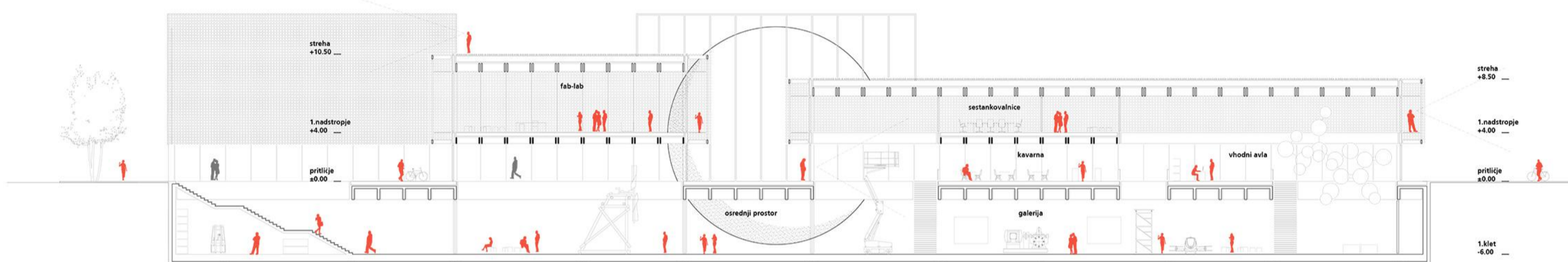
PROGRAMSKA SHEMA KLETI

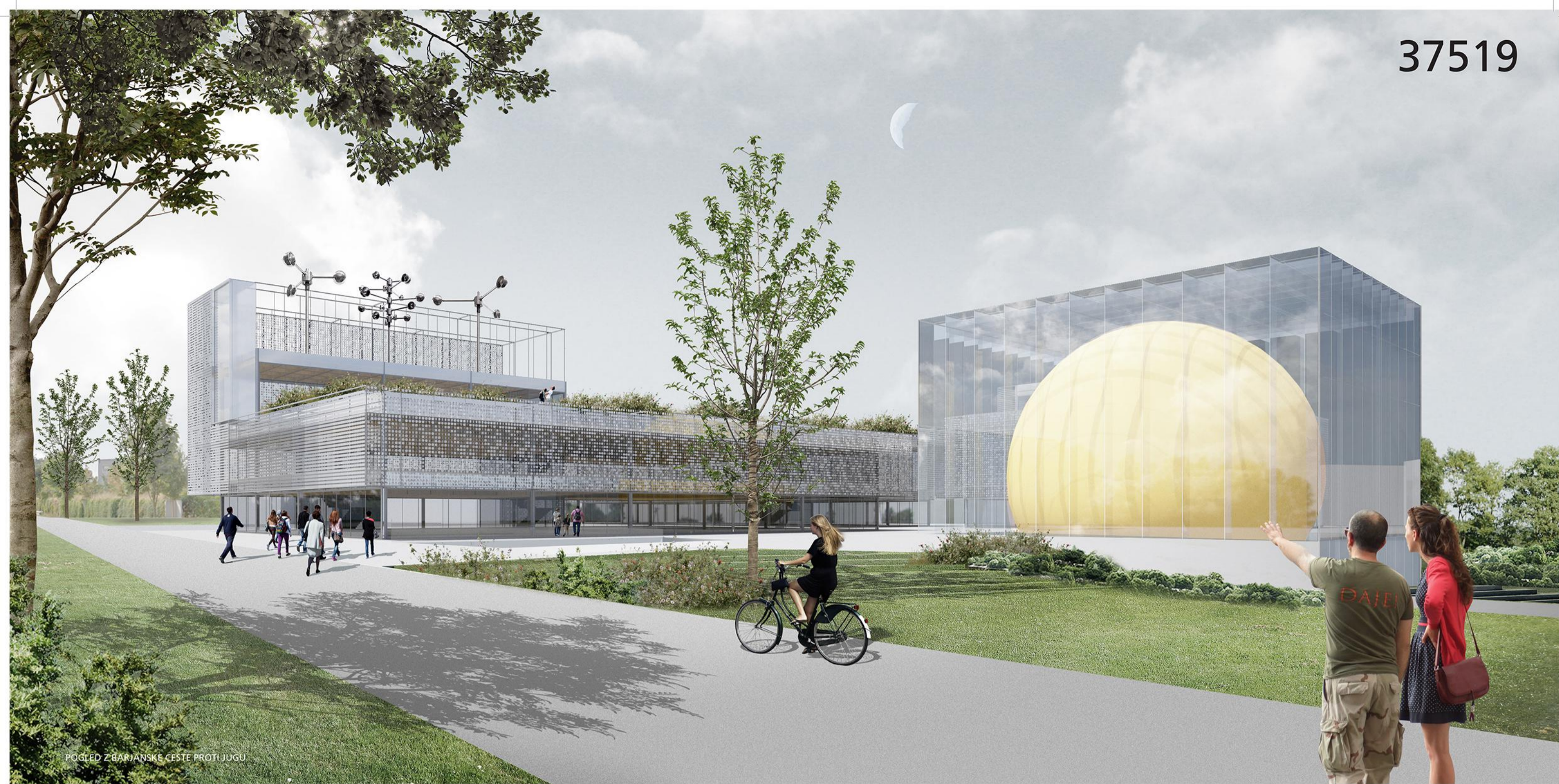


SITUACIJA_1:500



PREREZ D-D_1:200

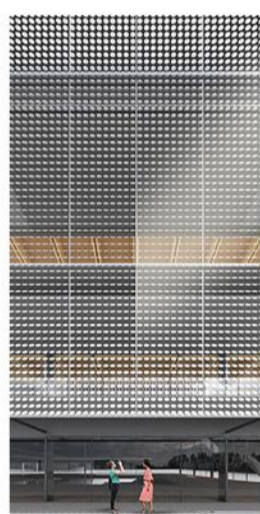




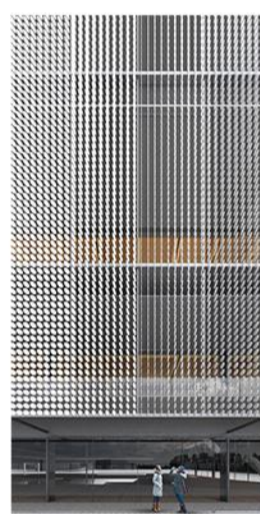
POGLED Z BARJANSKE CESTE PROTI JUGU



FASADA KOT LED ZASLON



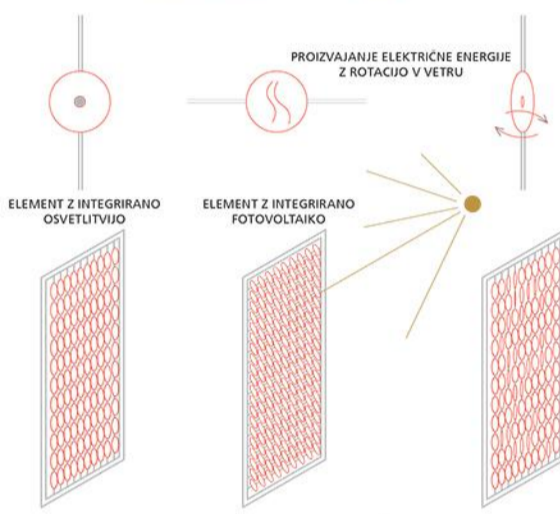
ELEMENT SENČILA



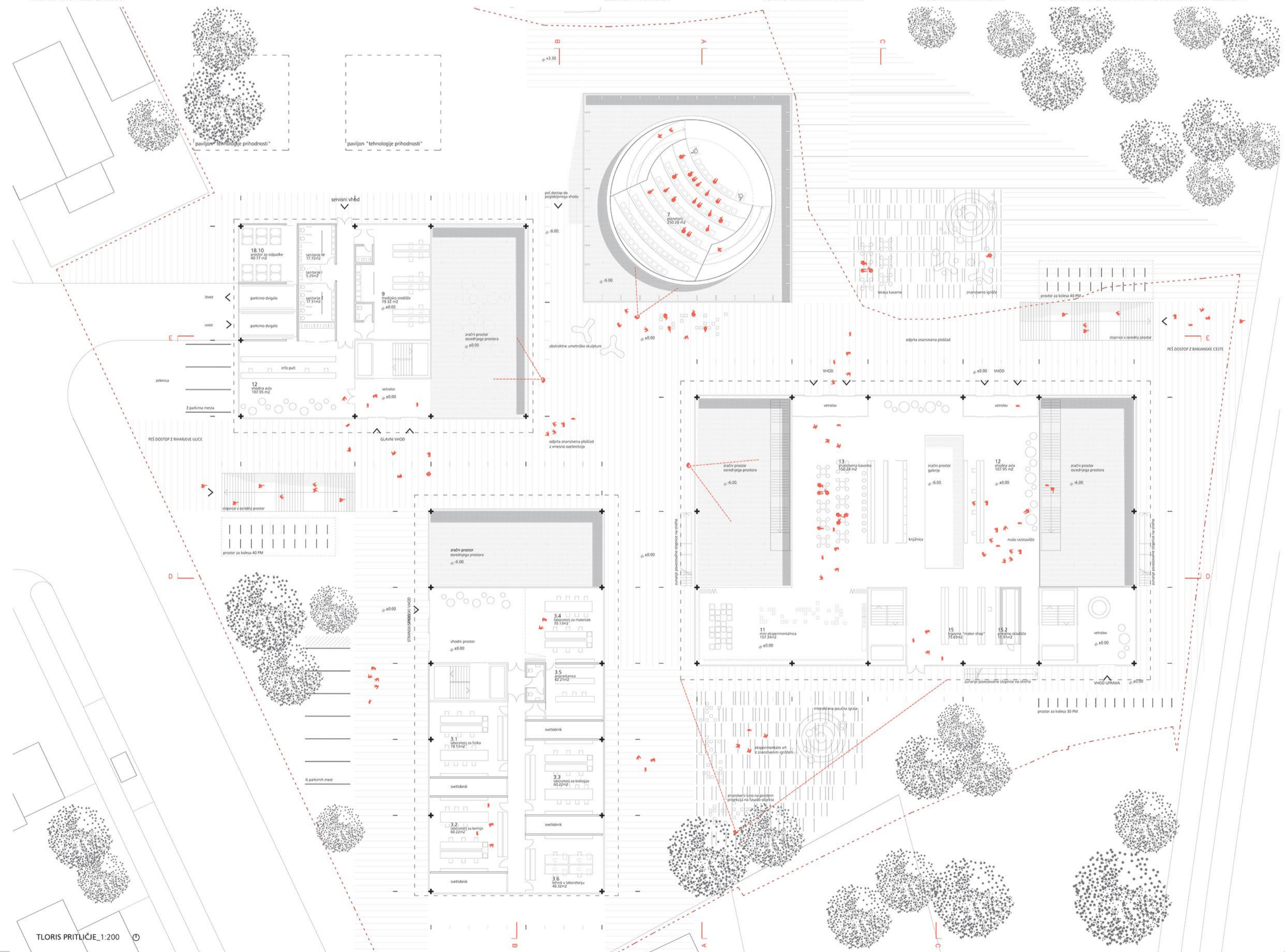
REGULACIJA TRANSPARENCE

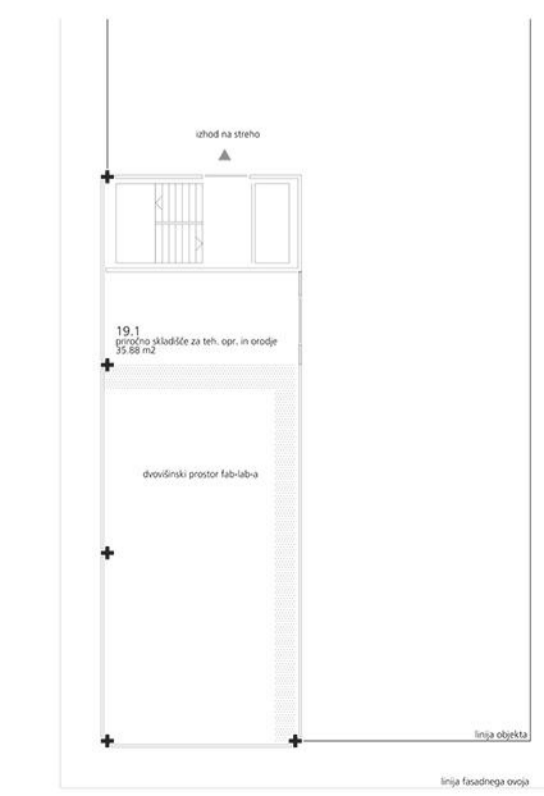
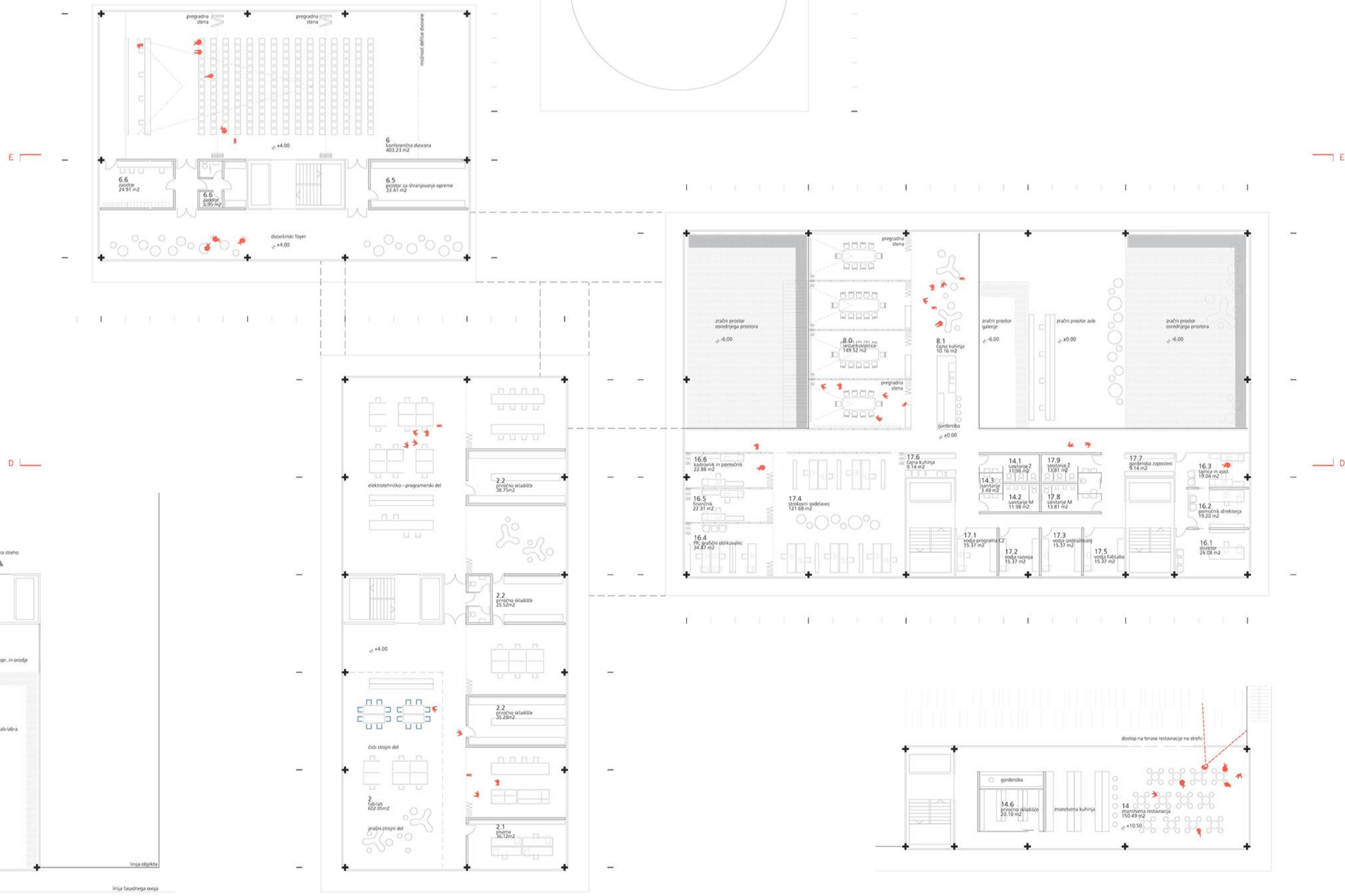
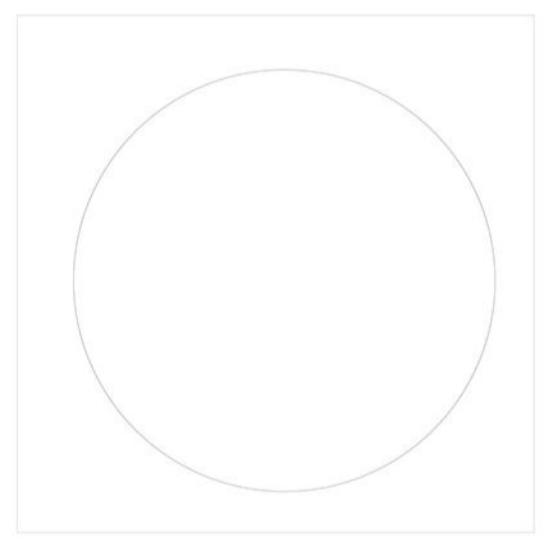
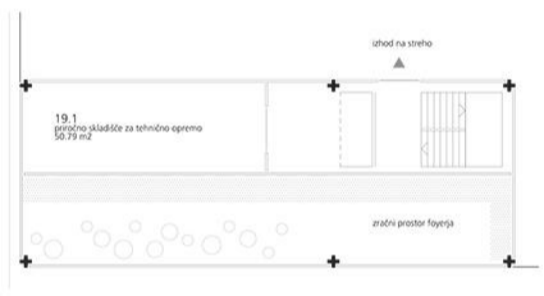
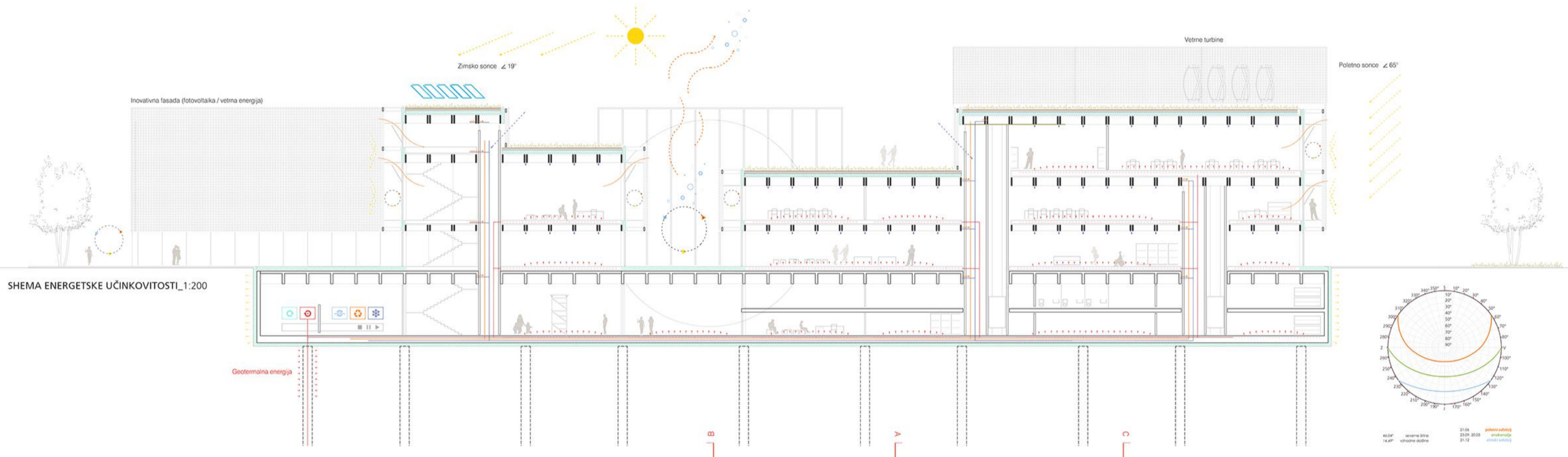
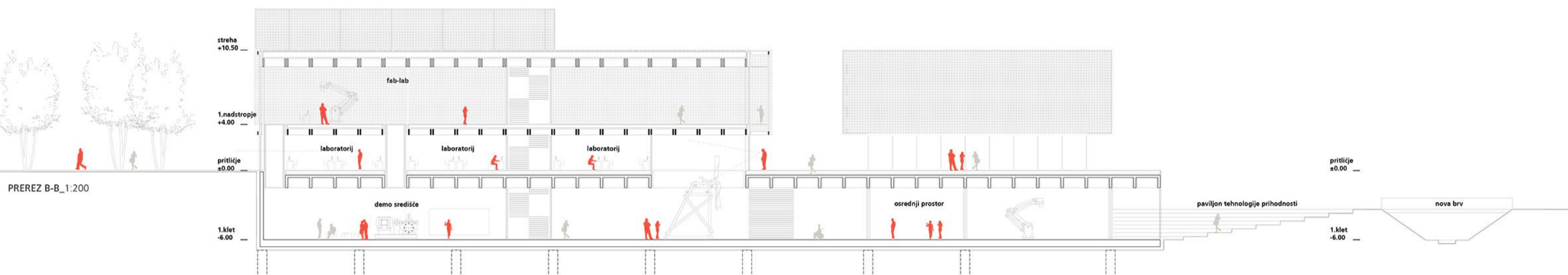
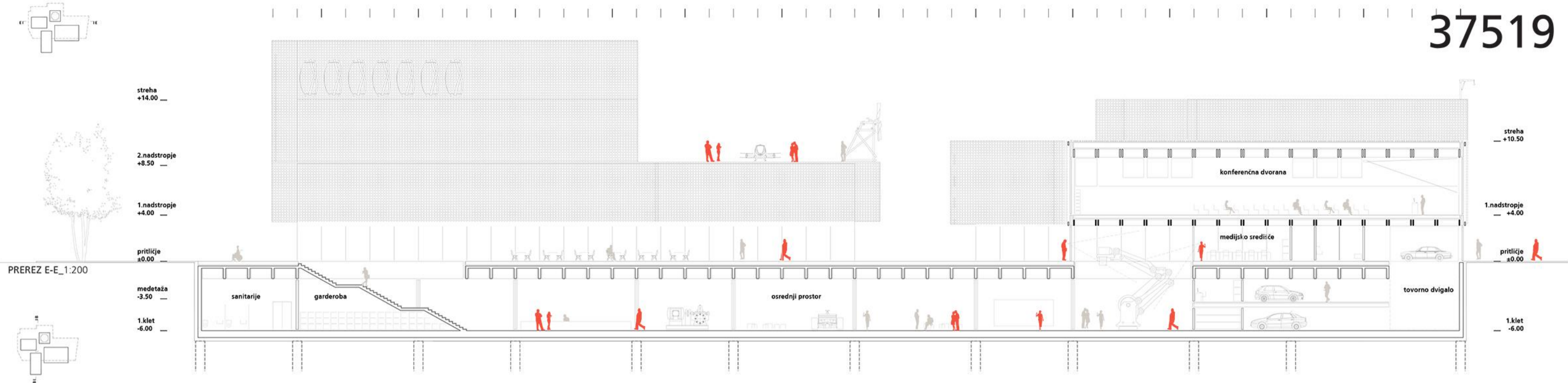


ODZIVNOST NA VREME



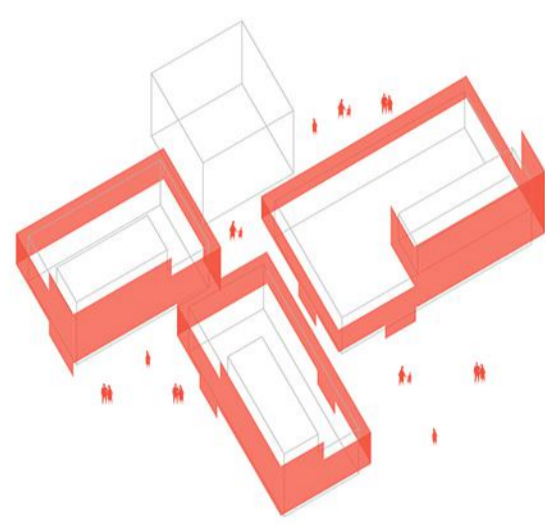
SHEMA FASADNEGA OVOJA Z DINAMIČNIMI ELEMENTI



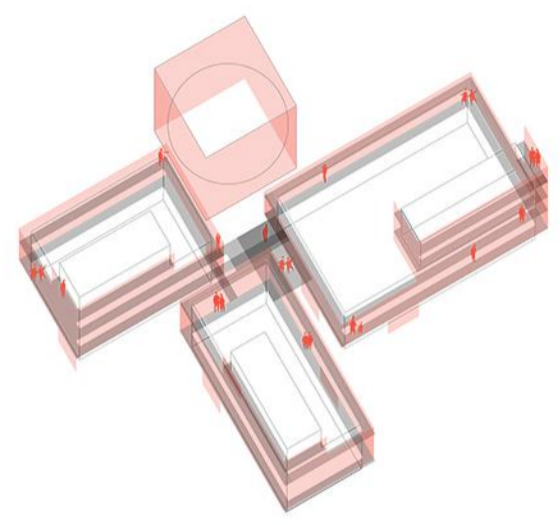




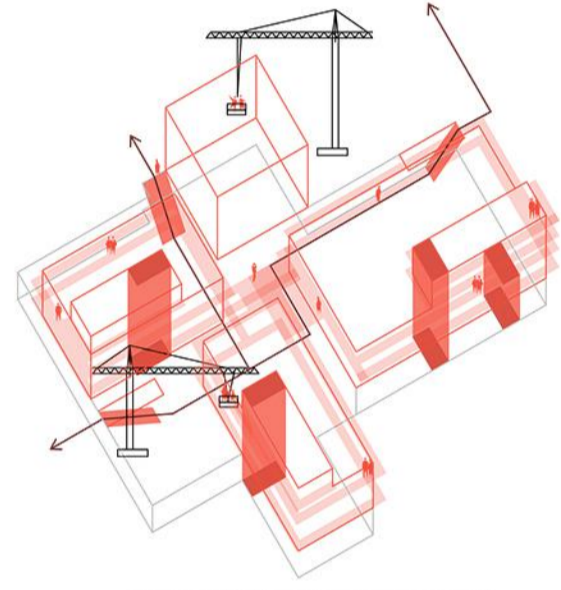
POGLED Z BARJANSKE CESTE



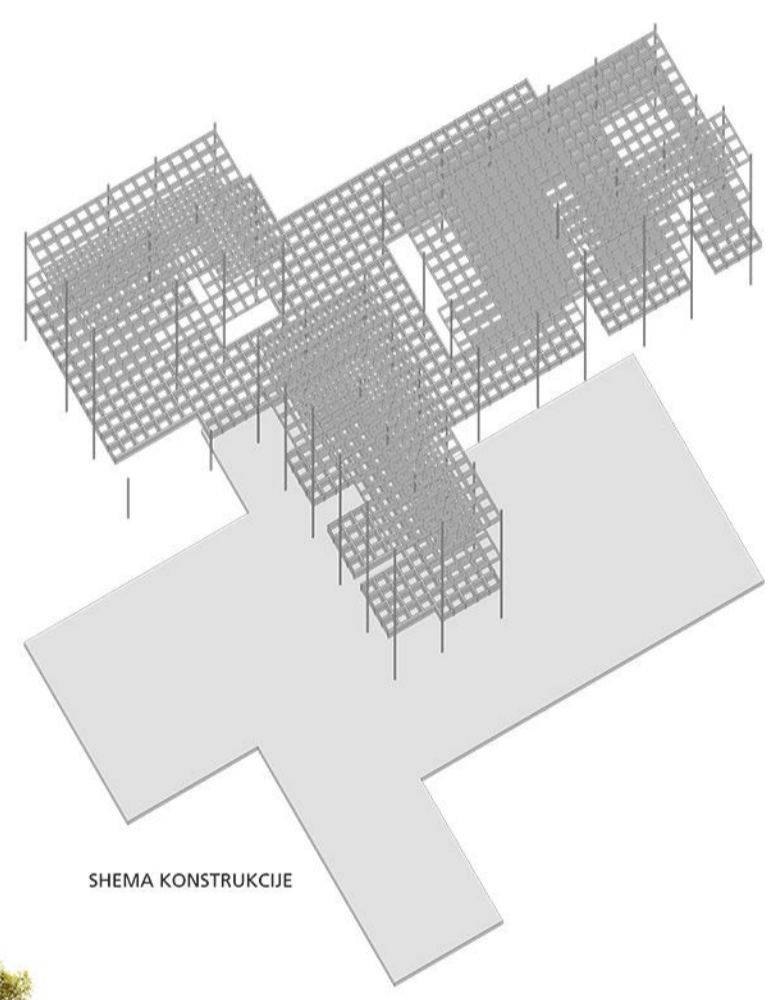
HEMA OVOJA INTERAKTIVNE FASADE



HEMA POVEZOVANJA ZUNANJEGA HODNIKA



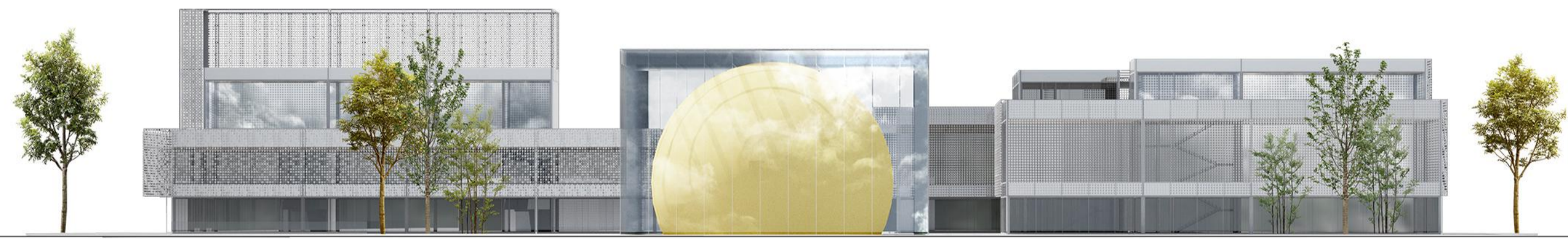
HEMA KOMUNIKACIJ IN ALTERNATIVNIH POVEZAV MED VOLUMNI IN NIVOJI



HEMA KONSTRUKCIJE



FASADA VZHOD_1:200



FASADA SEVER_1:200



FASADA ZAHOD_1:200



FASADA JUG_1:200