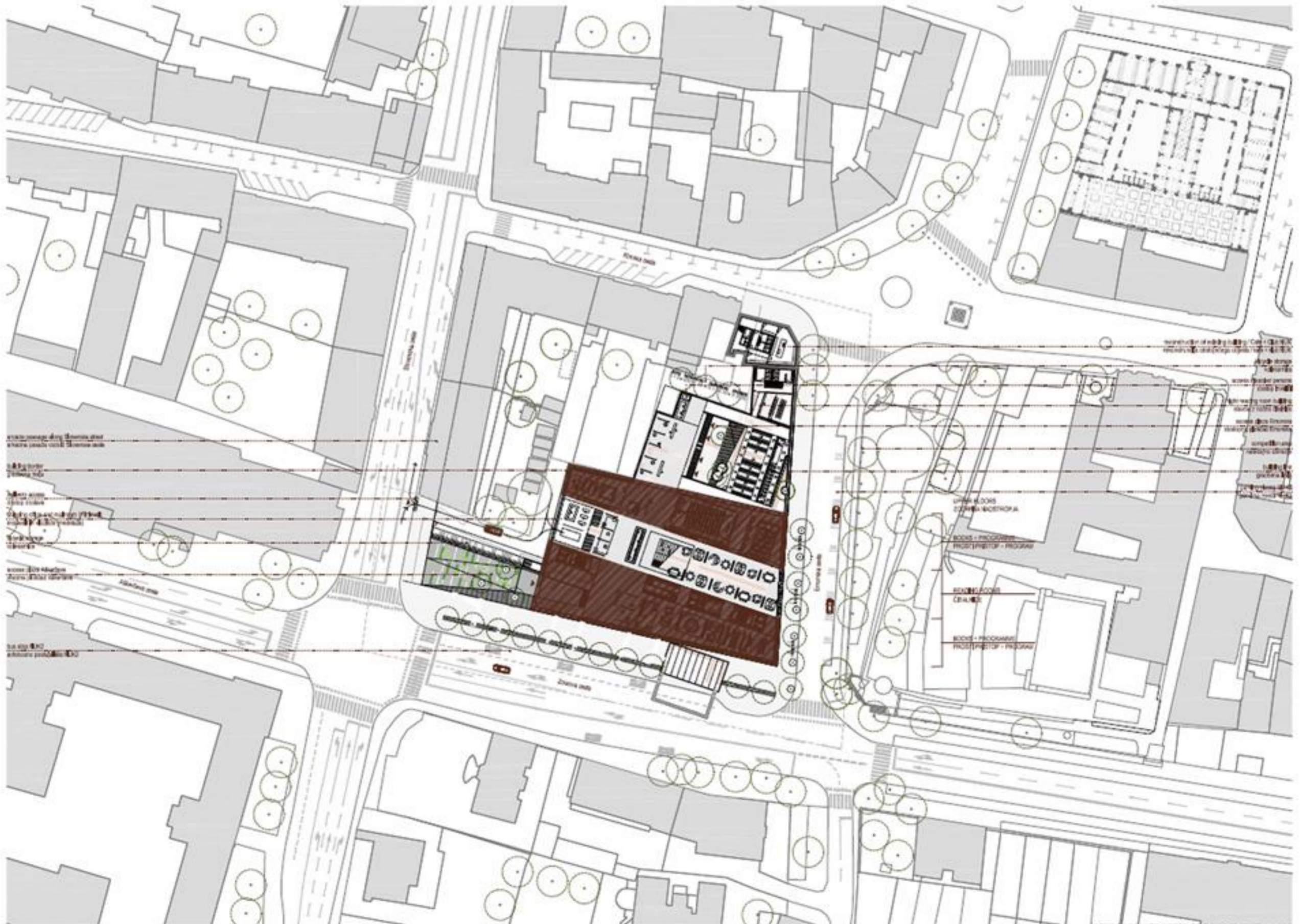


NUK 2 PROJECT EXISTS WITHIN 3 POSSIBLE 'CONTEXTS': ARCHAEOLOGY, EXISTING CITY STRUCTURE AND PLANNING, AND THE EXHILARATING YET DIFFICULT LEGACY OF NUK 1.





ARCHAEOLOGY IS NOT SEEN AS AN OBSTACLE, BUT AS A DEFINING INSTRUMENT FOR STRUCTURING OF THE PROJECT.

LOWER GROUND FLOOR / ENTRANCE HALL / 1:200





NEW ACCESS PLAZA, CUT WITHIN THE CITY BLOCK AND BORDERED BY AN OPEN-AIR READING ROOM, BECOMES A NEW PUBLIC SPACE OF THE CITY

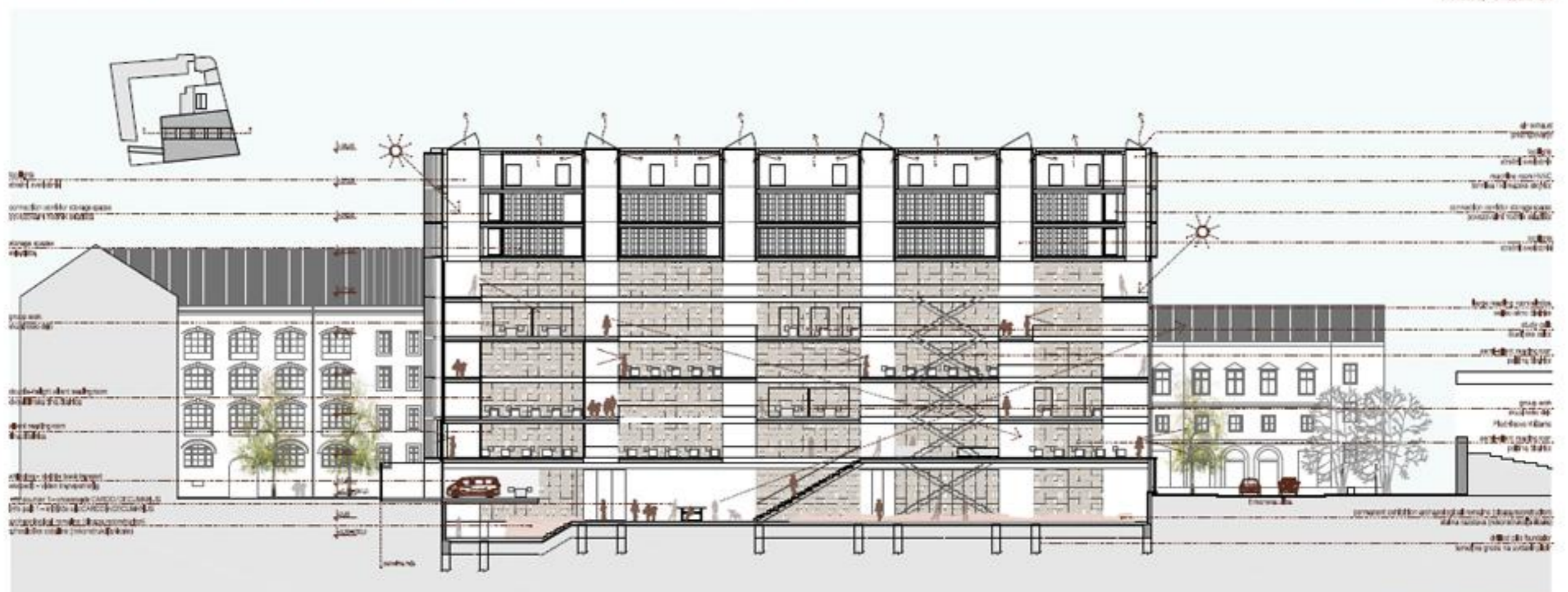
UPPER GROUND FLOOR / FREE ACCESS AREA | 1:200





LARGE READING ROOM, FORMED THROUGH STACKING AND OVERLAPPING OF READING PLATFORMS, RISES VERTICALLY THROUGHOUT THE BUILDING.

1ST FLOOR / FREE ACCESS AREA / 1:200



LONGITUDINAL SECTION / 1:200



TOP LIT PIRANESIAN SPACE OF THE READING ROOM, RISING OVER DECUMANUS, OPENS TOWARDS VIEWS OF KRÍZANKE MONASTERY AND THE CITY,

2ND FLOOR / SPECIAL COLLECTIONS / 1,200





3RD FLOOR / WORKING UNITS / 1,200  
Scale: 1:200



4TH FLOOR / WORKING UNITS / 1,200  
Scale: 1:200

THE STRUCTURAL ELEVATION WALL OF COLUMNS ADJUSTS ITSELF TO CHANGING PROGRAMMES BEHIND IT, BECOMING MORE OR LESS TRANSPARENT DEPENDING ON BUILDING USE.



ELEVATION / ZOISOVA CESTA / 1,200  
Scale: 1:200



5TH FLOOR / STORAGE FACILITIES / 1:200

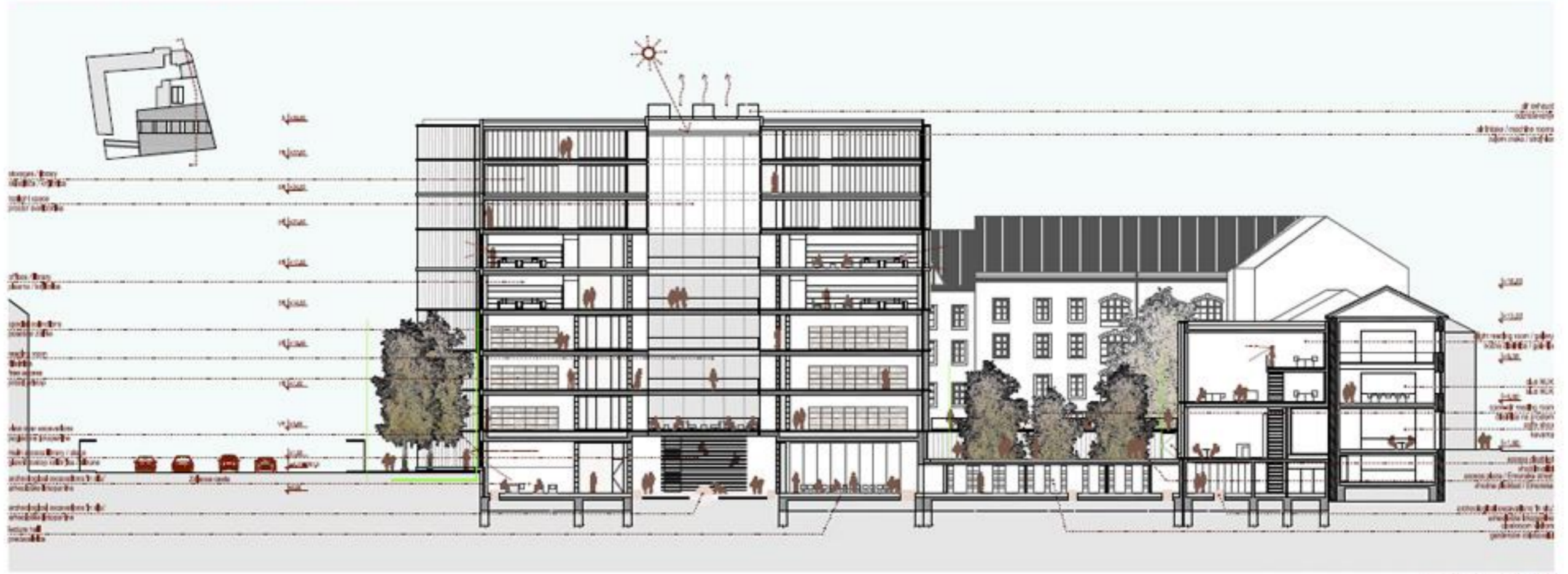


STORAGES AND TECHNICAL SPACES ARE PIERCED WITH LIGHT WELLS, BRINGING LIGHT TO THE READING SPACES BELOW.

6TH FLOOR / STORAGE FACILITIES / 1:200



7TH FLOOR / STORAGE AND TECHNICAL FACILITIES / 1:200



CROSS SECTION / 1,200



THE LARGE VOLUME OF NUK 2 BUILDING - A 'DAY' LIBRARY, GETS INTEGRATED INTO THE CITY BLOCK STRUCTURE VIA ITS SMALL COUNTERPART - A NIGHT READING ROOM BUILDING.



ELEVATION / EMONSKA CESTA / 1,200



