



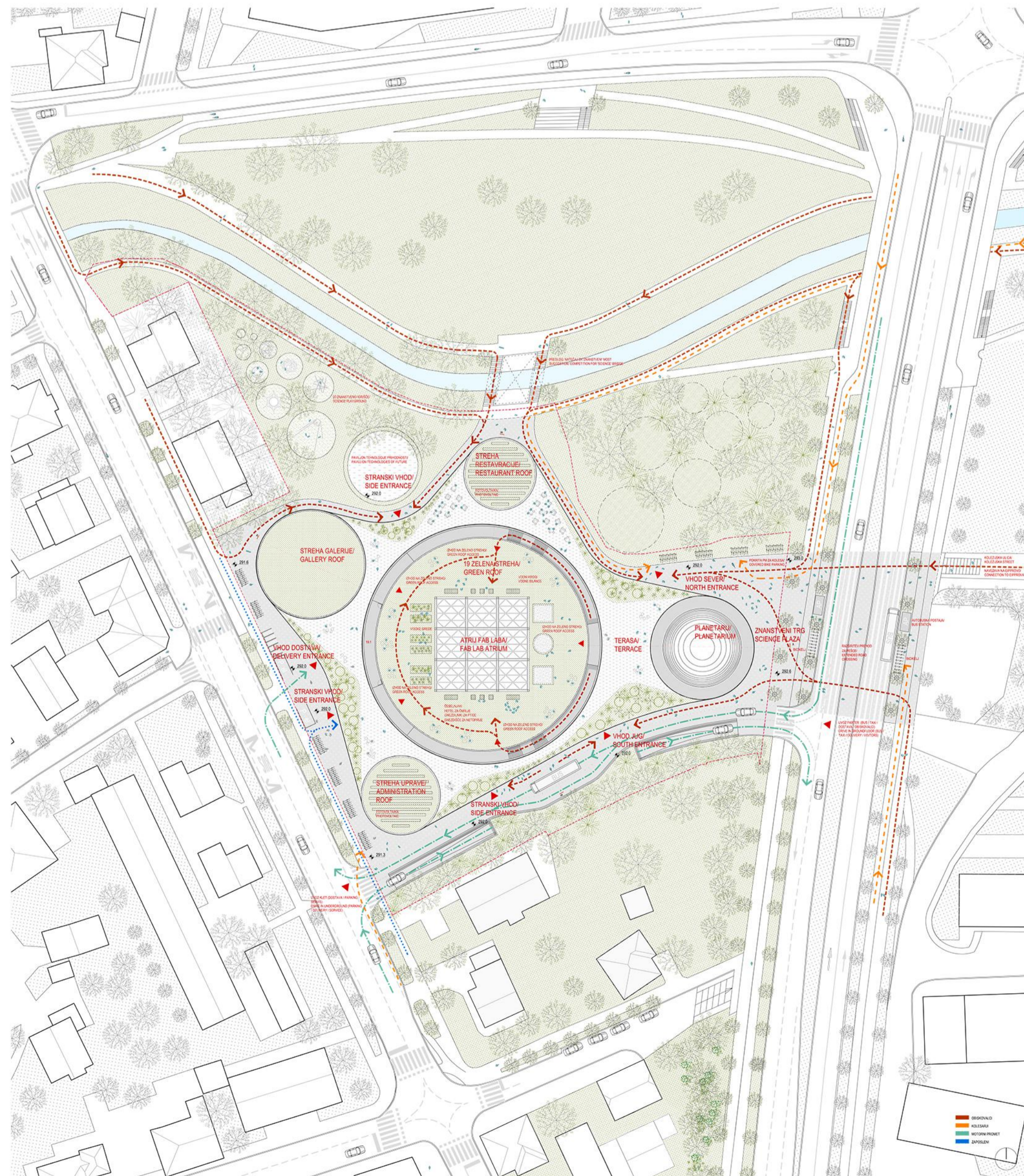
PERSPEKTIVNI PRIKAZ VHODA V GLAVNI FOYER CENTRA / PERSPECTIVE VIEW OF THE ENTRANCE INTO THE MAIN FOYER

The circle is easy to find in nature, all you have to do is throw a stone into still water. Instead, the sphere appears spontaneously in soap bubbles. Trees grow following a concentric circular pattern: a section shows its rings.

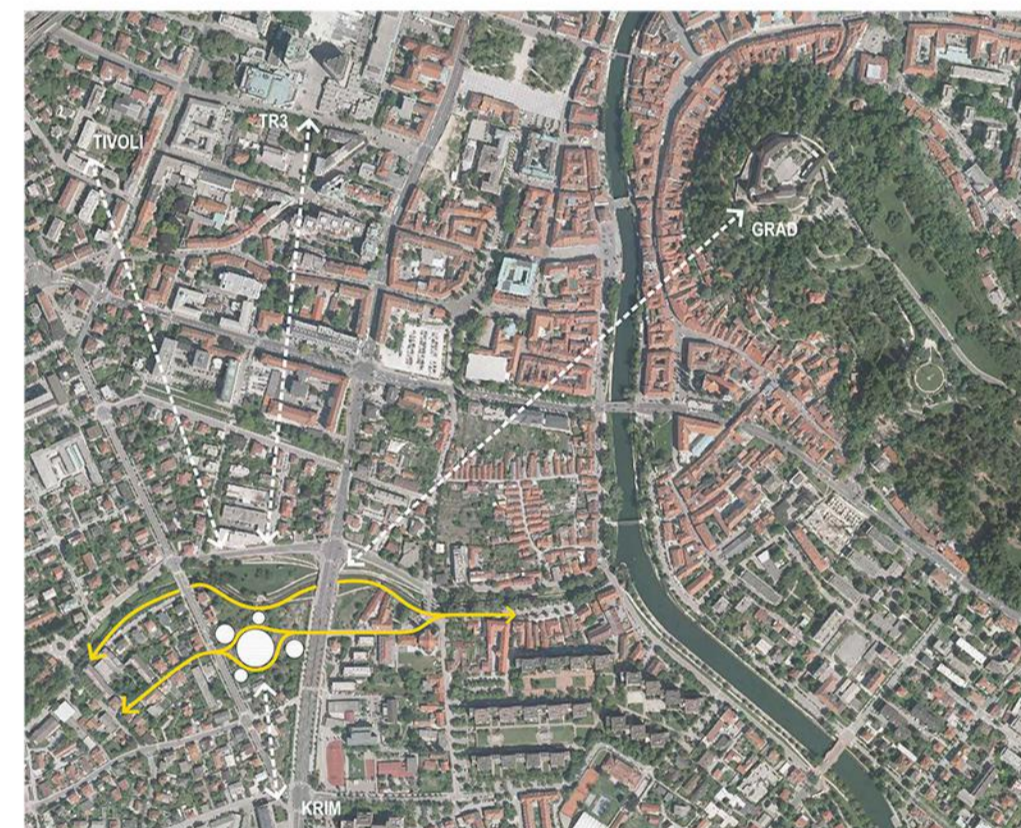
Bruno Munari
THE CIRCLE, 1964 Scheiwiller Milano

Circle is universal. It is related to the divine and it is an image of science. Humans are using circles in representing and understanding the universe: from nano particles to galactic dimensions. Meanwhile, the people naturally self-organise in circles to exchange information and knowledge. The circle is our tool for organising spatial and programme scheme of the Science Centre. We are proposing a project composed of circular pavilions in the park, connected with the common roof.

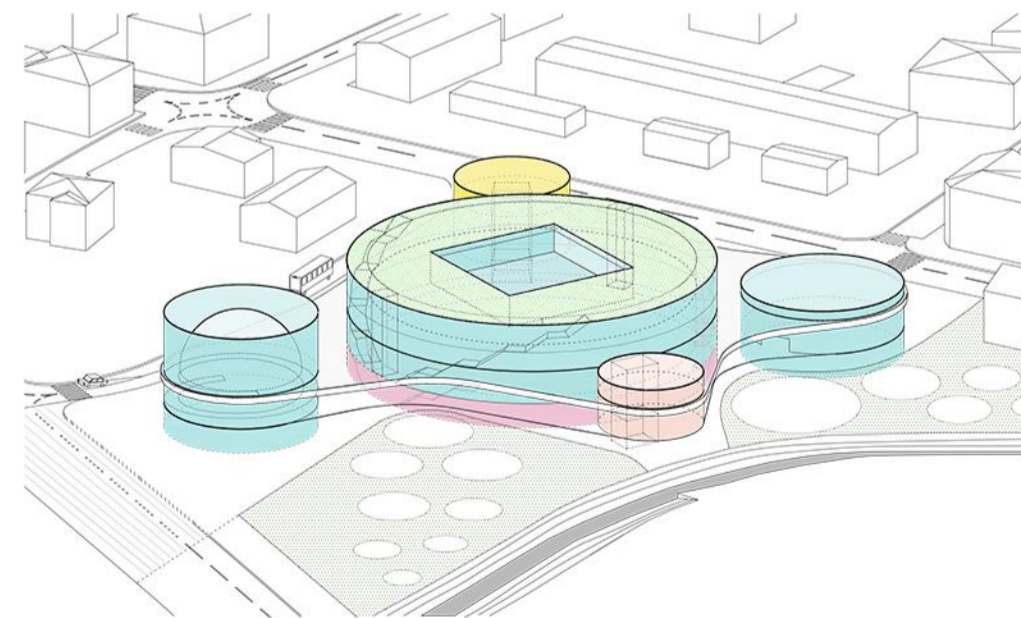
OD ATOMA DO PLANETA: katalog programskih paviljonov Centra znanosti / FROM THE ATOM TO THE PLANET: the catalogue of programme pavilions of Science Centre



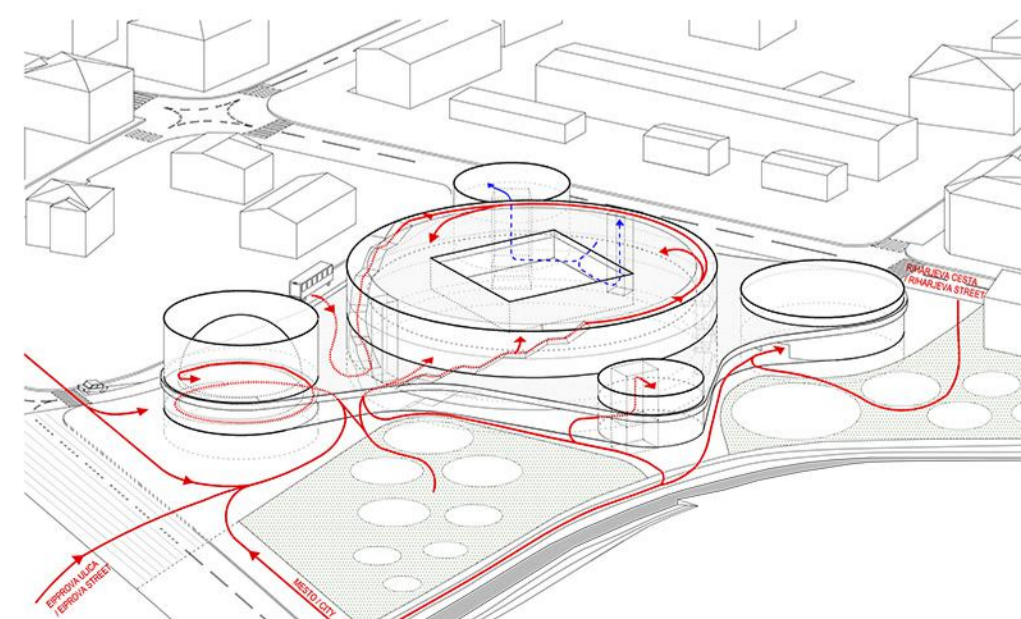
UREDITVENA SITUACIJA / SITUATION M 1:500



PAVILJONI V PARKU IN URBANI ODNOSI / PAVILIONS IN THE PARK AND URBAN RELATIONS



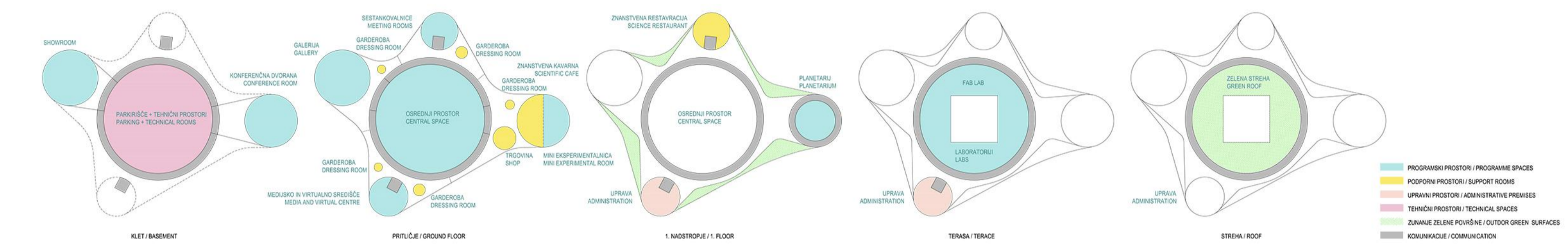
AKSONOMETRIČNA ŠHEMA DISTRIBUCIJE PROGRAMA / AXONOMETRIC SCHEME OF PROGRAMME DISTRIBUTION



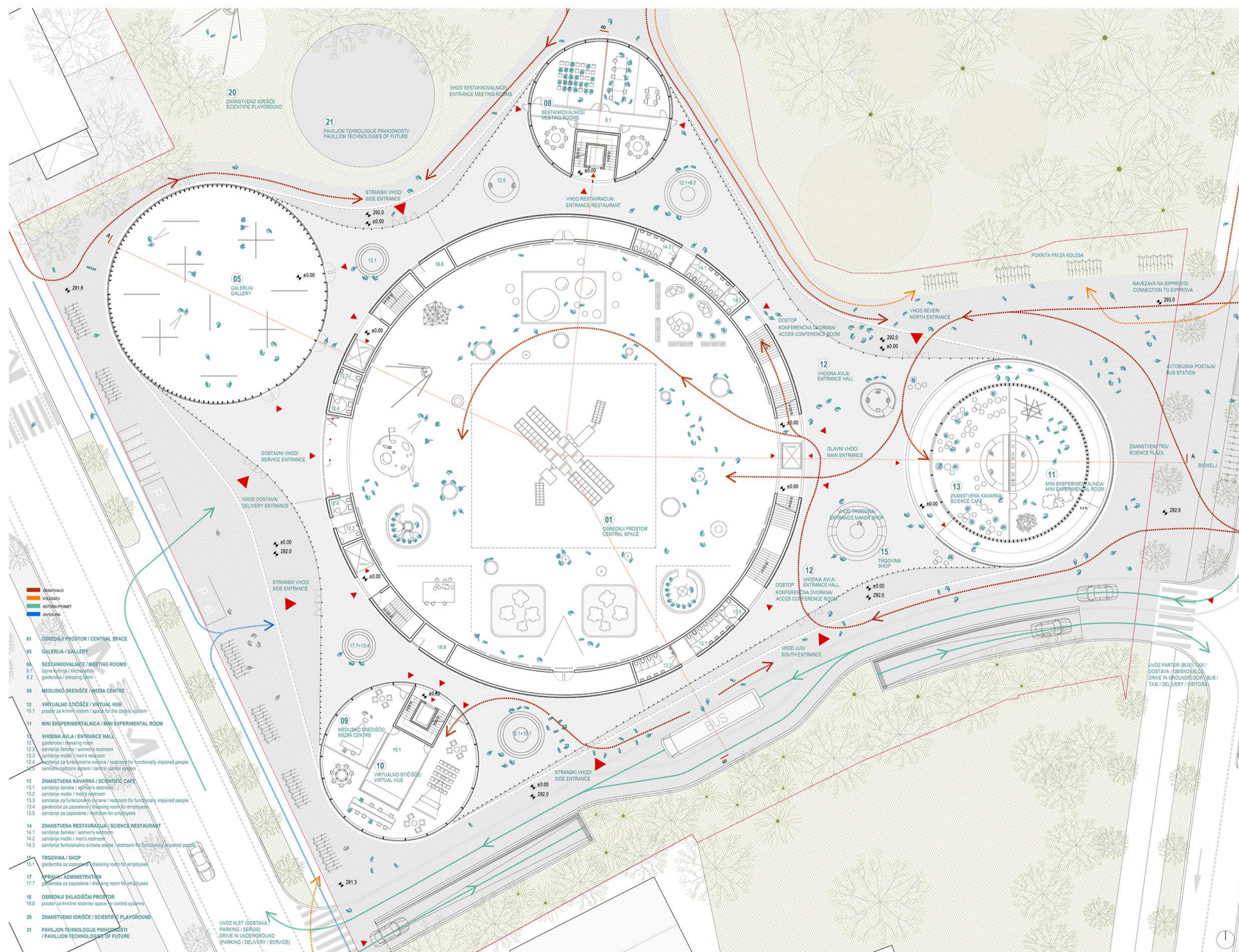
AKSONOMETRIČNA ŠHEMA DOSTOPOV, POTI IN VHODOV V CENTER / AXONOMETRIC SCHEME OF ACCESSES, PATHS AND ENTRANCES



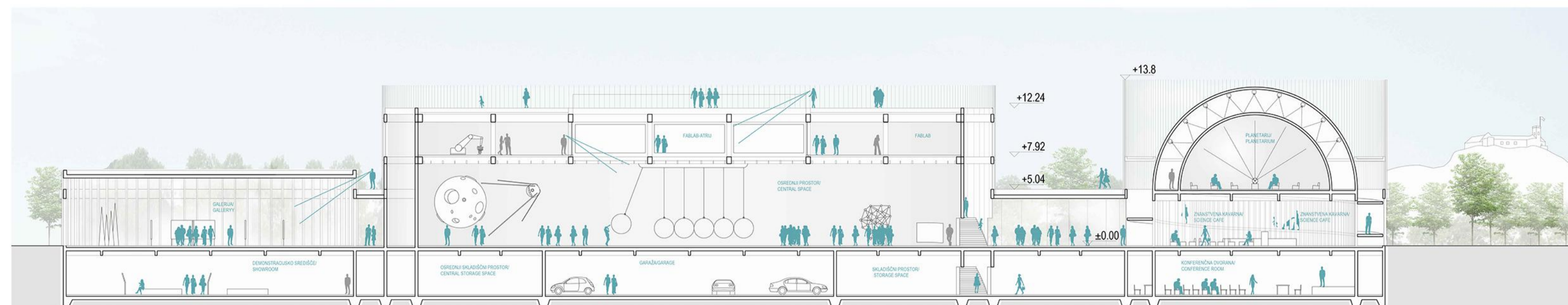
PERSPEKTIVNI PRIKAZ OSREDNJEGA PROSTORA / PERSPECTIVE VIEW OF THE CENTRAL SPACE



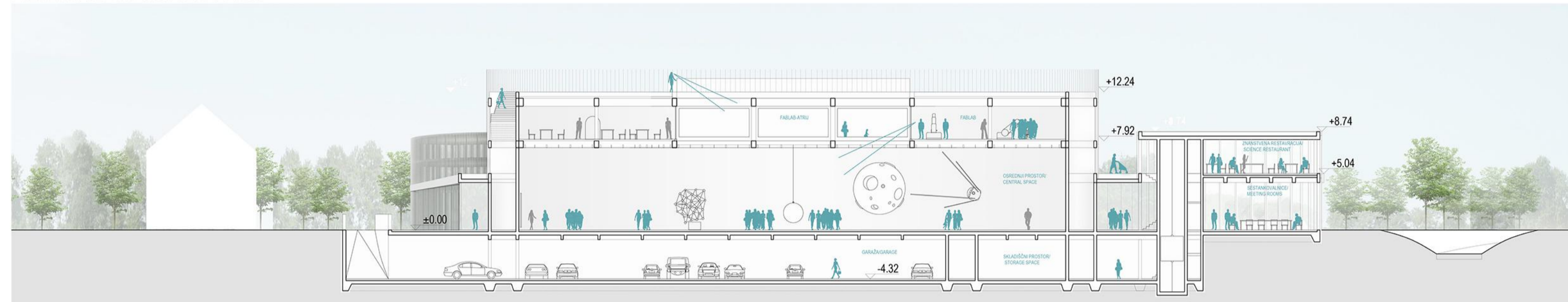
SHEMATSKI PRIKAZ RAZPOREDITVE PROGRAMSKIH SKLOPOV PO ETAŽAH / SCHEMATIC DIAGRAM OF PROGRAMME DISTRIBUTION



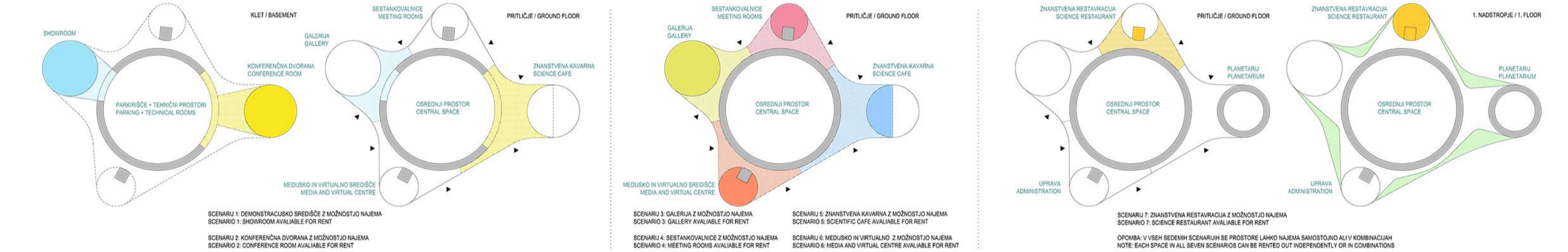
TLORIS PRITLIČJA / GROUND FLOORPLAN M 1:200



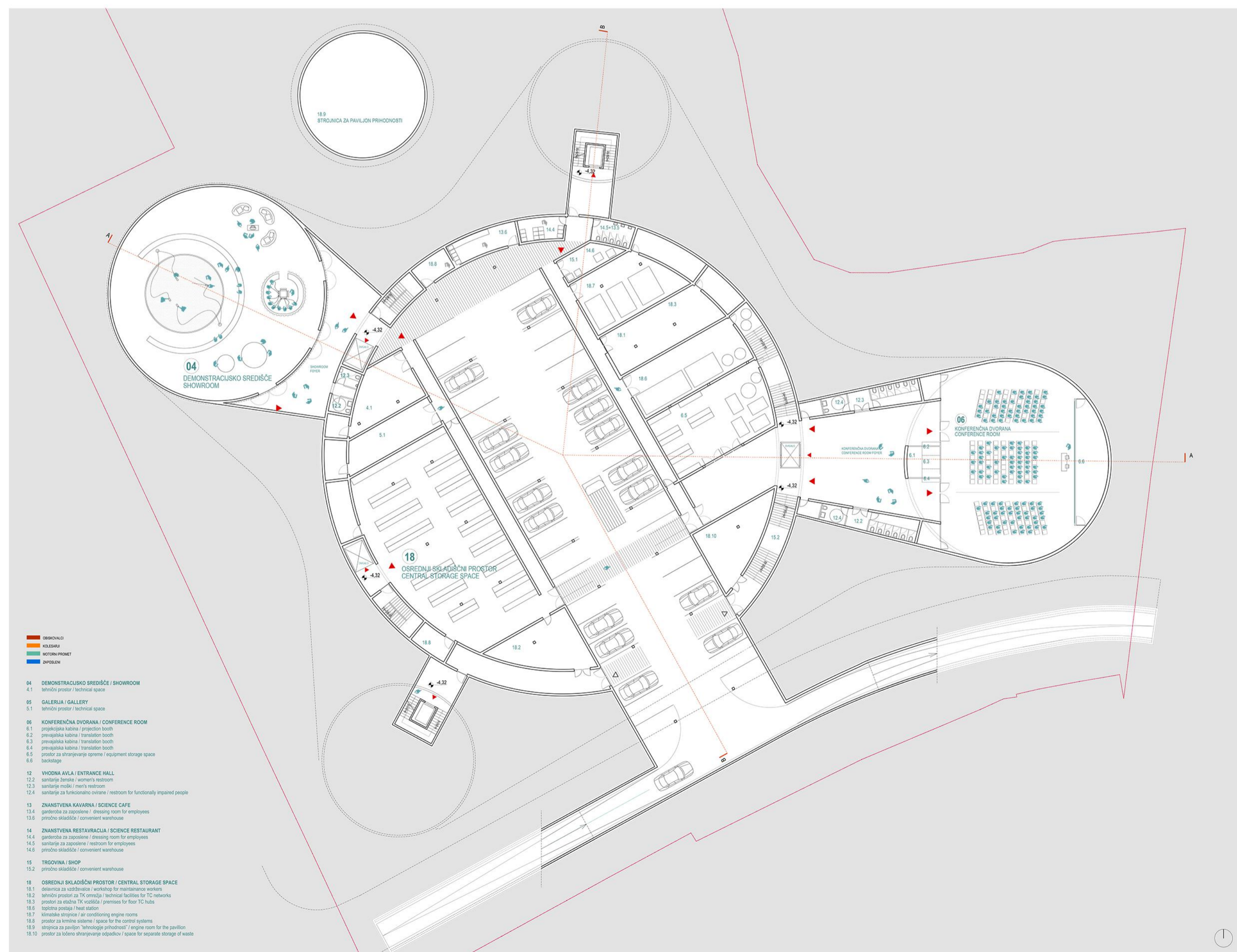
PREREZ A-A / SECTION A-A M 1:200



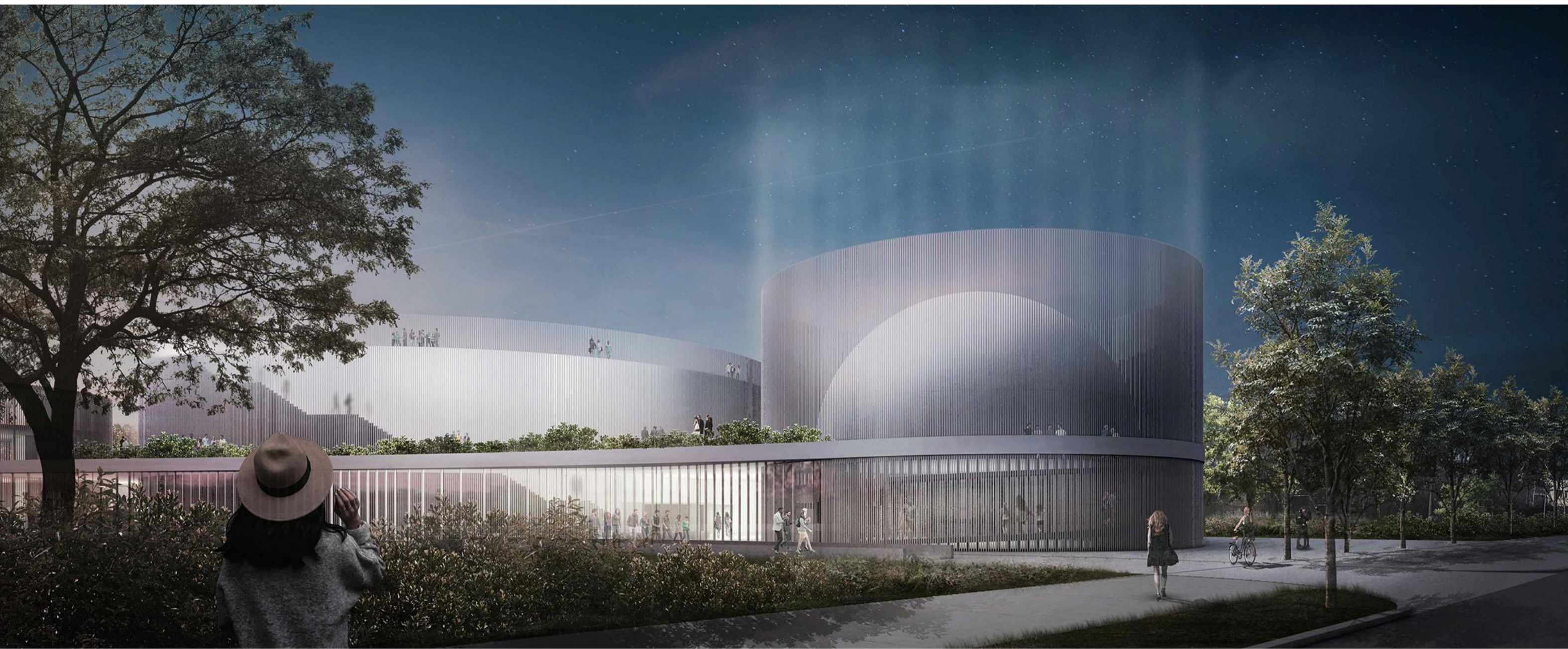
PREREZ B-B / SECTION B-B M 1:200



SCENARIJI UPORABE / POSSIBLE SCENARIOS



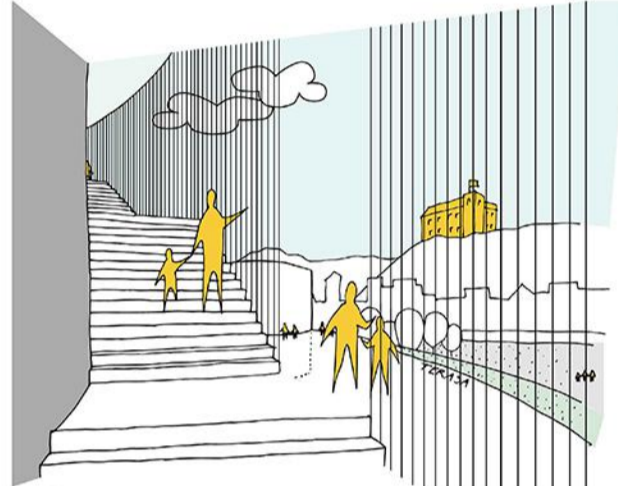
TLORIS KLETI / BASEMENT FLOORPLAN M 1:200



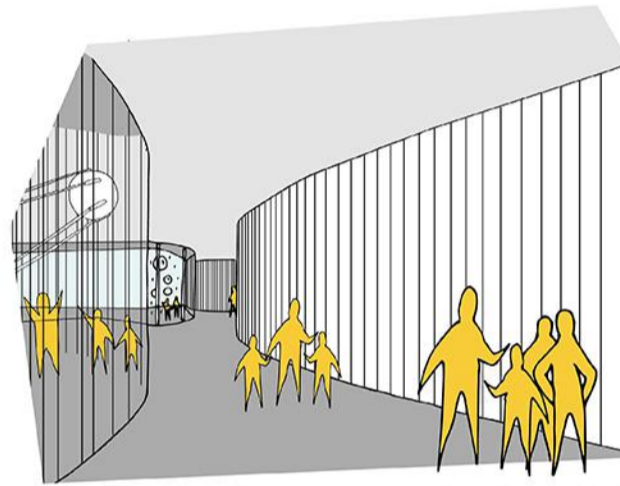
NOČNI POGLED IZ J STRANI - BARJANSKA CESTA / NIGHT VIEW FROM THE NORTH SIDE - BARJANSKA STREET



iz znanstvene restavracije opazujem dogajanje na terasi
/ from scientific restaurant i'm watching the happening on the terrace



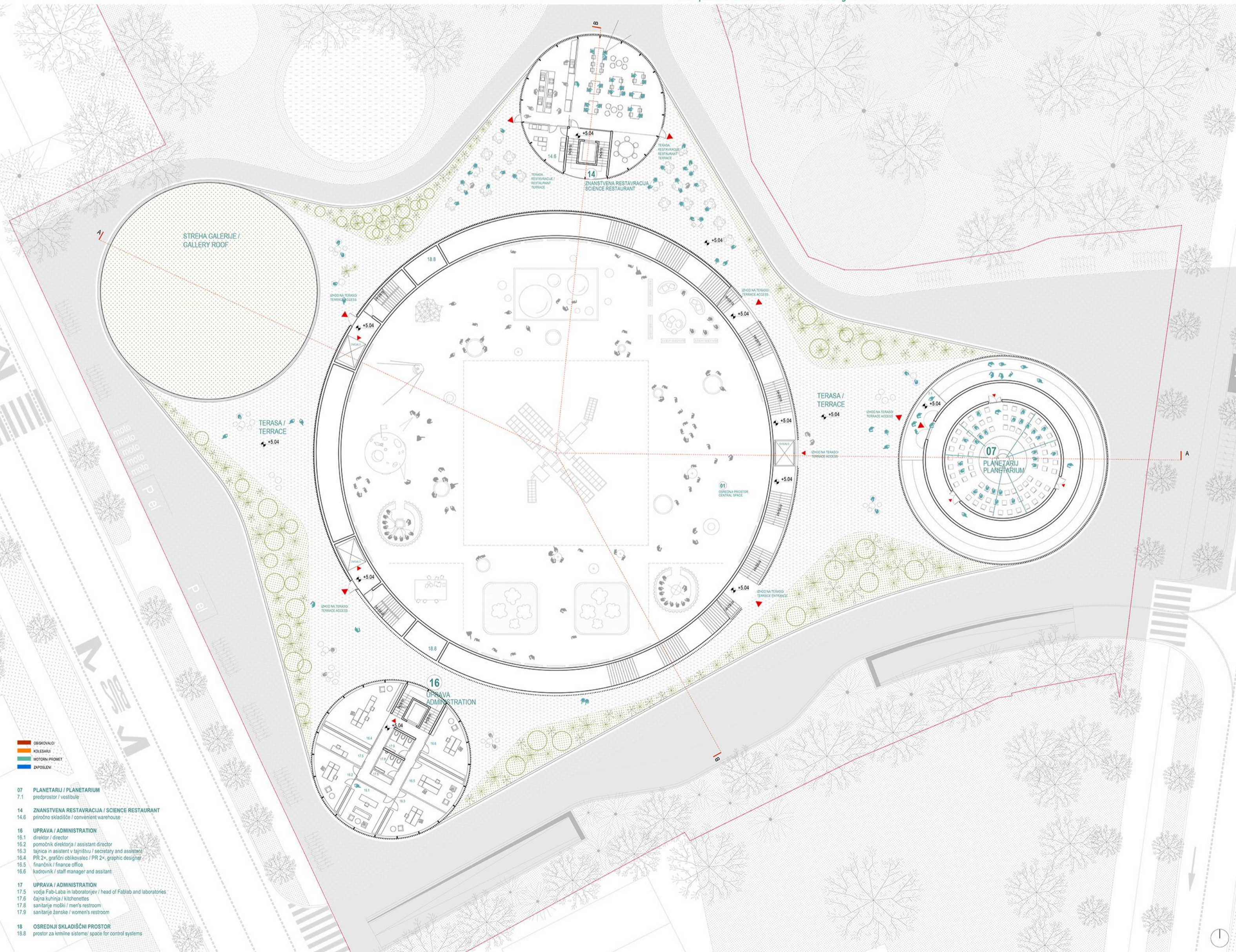
stopnišče, ki vodi na zeleno streho ponuja pogled na grad
/ the staircase leading to the green roof offers a view of the castle



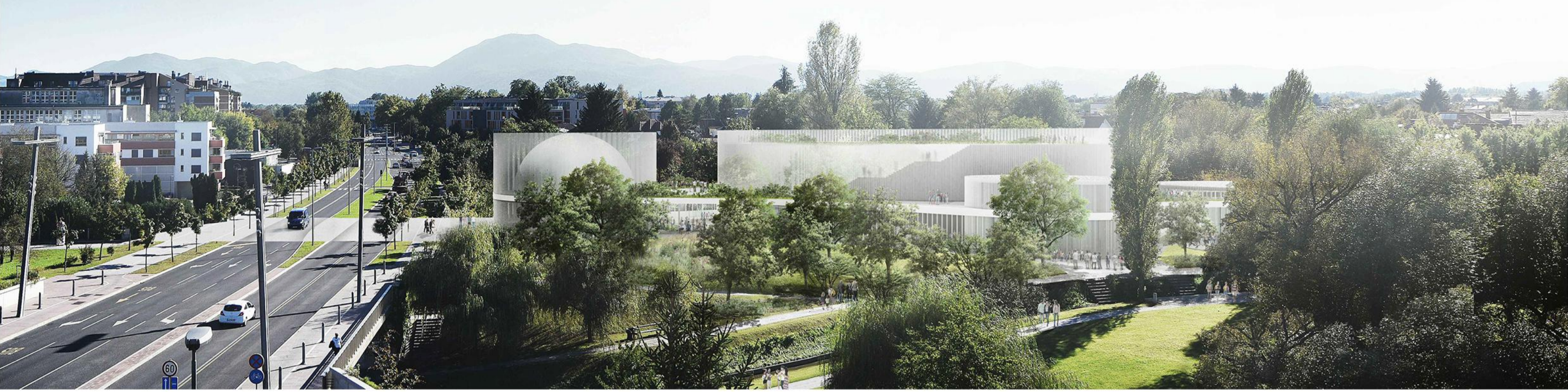
med galerijo in osrednjim prostorom, proti paviljonu prihodnosti in sestankovalnicam / between the gallery and the central space, against the "pavilion of the future" and meeting rooms



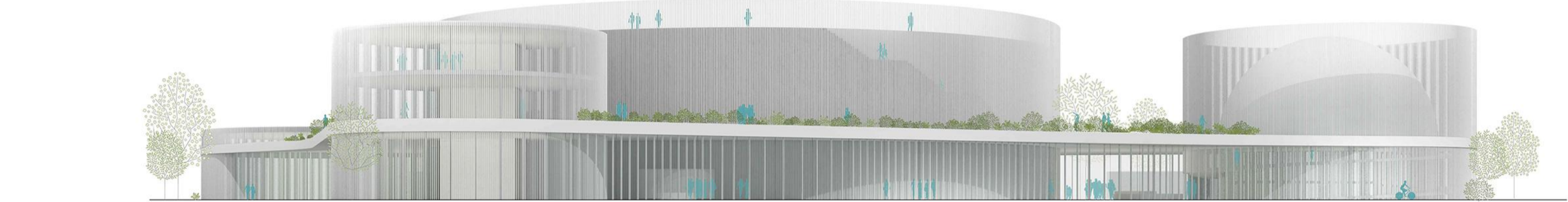
"sedim v kavarni in gledam dogajanje v glavnem foyerju"
/ "i'm sitting in the cafe and watching the happening in the foyer"



TLORIS 1.NADSTROPJA / 2ND FLOOR PLAN M 1:200



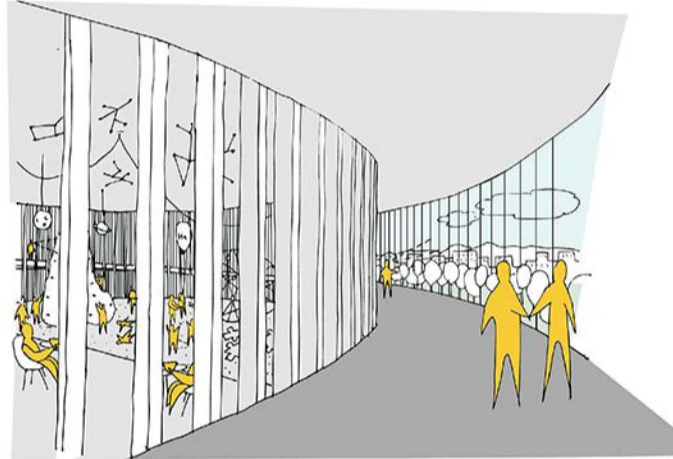
OBVEZNI POGLED IZ S STRANI / MANDATORY VIEW FROM THE NORTH SIDE



JZ FASADA / SOUTHWEST FACADE M 1:200



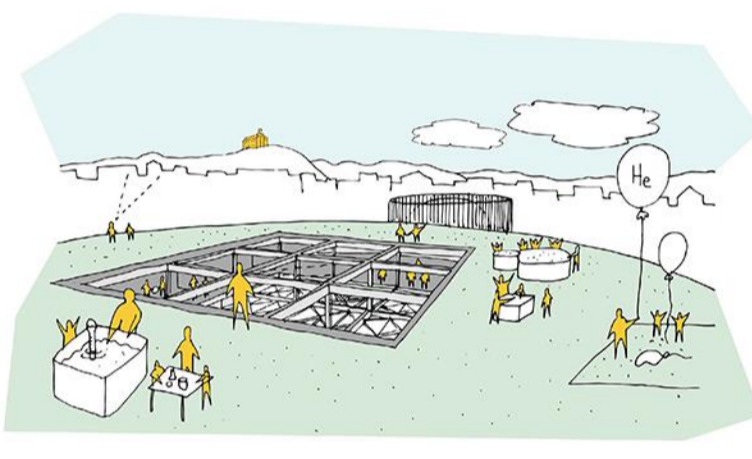
fab lab z atrijem ponuja direkten pogled v osrednji prostor / fab lab with atrium offers a direct view towards the central space



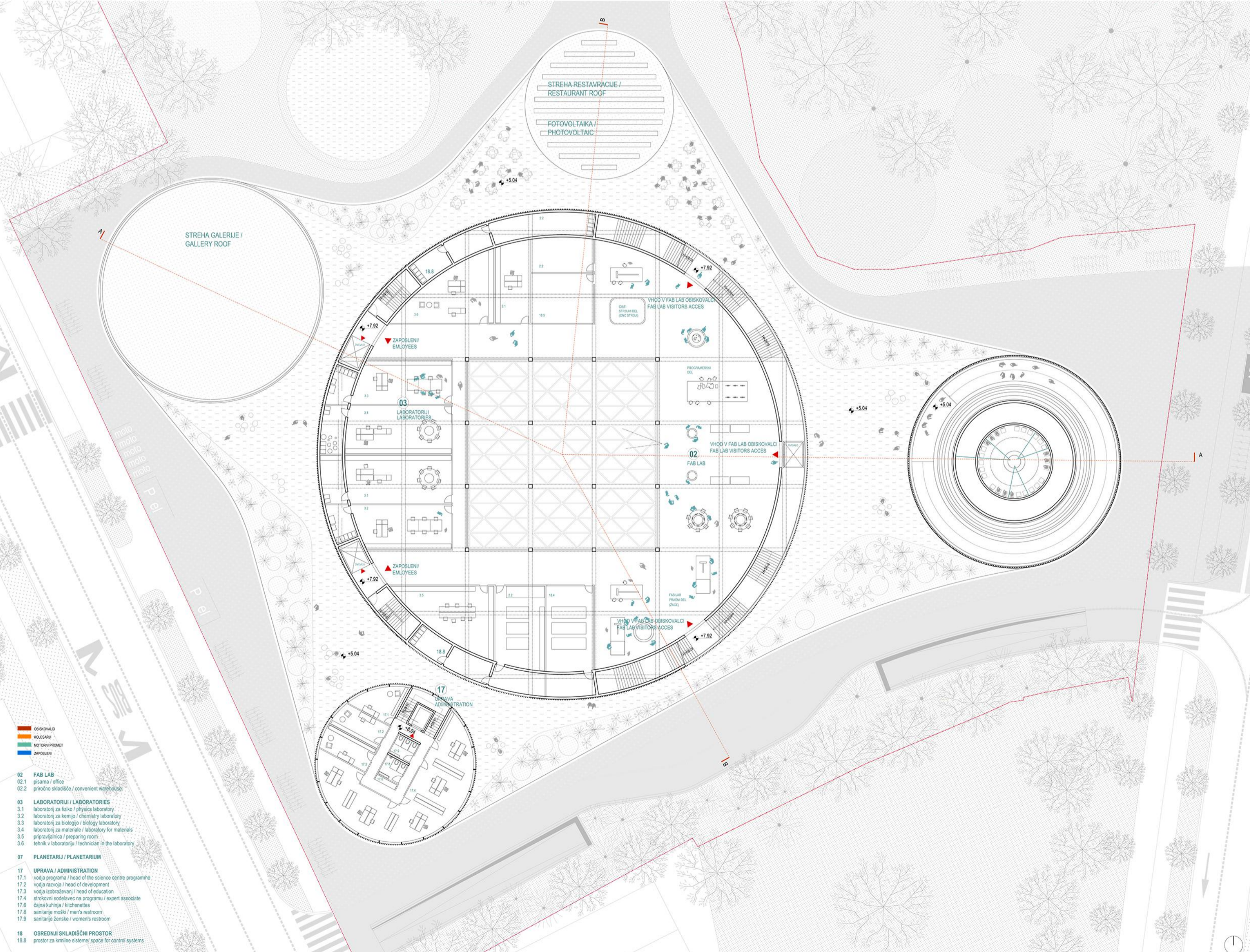
klančina je prostor priprave in posebne poti do planetarija! / the ramp is a place of preparation and a special path to the planetarium!



učenci osnovne šole na ekskurziji v centru znanosti / primary school children on an excursion to the science centre



zelena streha je prostor za učenje in igro, z najlepšimi pogledi proti mestu / green roof is the place for learning and playing, offering the nicest views towards the city



- 02 OSKOVALCI
 - 03 KOLESAKI
 - 04 KOLESO PROMET
 - 05 ZAPORBE
- 02 FAB LAB
 - 02.1 pisarna / office
 - 02.2 pomočno skladišče / convenient warehouse
 - 03 LABORATORIJ / LABORATORIES
 - 3.1 laboratorij za fiziko / physics laboratory
 - 3.2 laboratorij za kemijo / chemistry laboratory
 - 3.3 laboratorij za biologijo / biology laboratory
 - 3.4 laboratorij za materialno / laboratory for materials
 - 3.5 pripravilnica / preparing room
 - 3.6 tehnik v laboratoriju / technician in the laboratory
 - 07 PLANETARIJ / PLANETARIUM
 - 17 UPRAVA / ADMINISTRATION
 - 17.1 vođa programa / head of the science centre programme
 - 17.2 vođa razvoja / head of development
 - 17.3 vođa izobraževanja / head of education
 - 17.4 strokovni sodelavec na programu / expert associate
 - 17.6 čajna kuhinja / kitchenettes
 - 17.8 sanitarna moštva / men's restroom
 - 17.9 sanitarna toaletna / women's restroom
 - 18 OSREDNJI SKLADIŠČNI PROSTOR
 - 18.8 prostor za krmilne sisteme / space for control systems

TLORIS 2.NADSTROPJA / 2ND FLOOR PLAN M 1:200